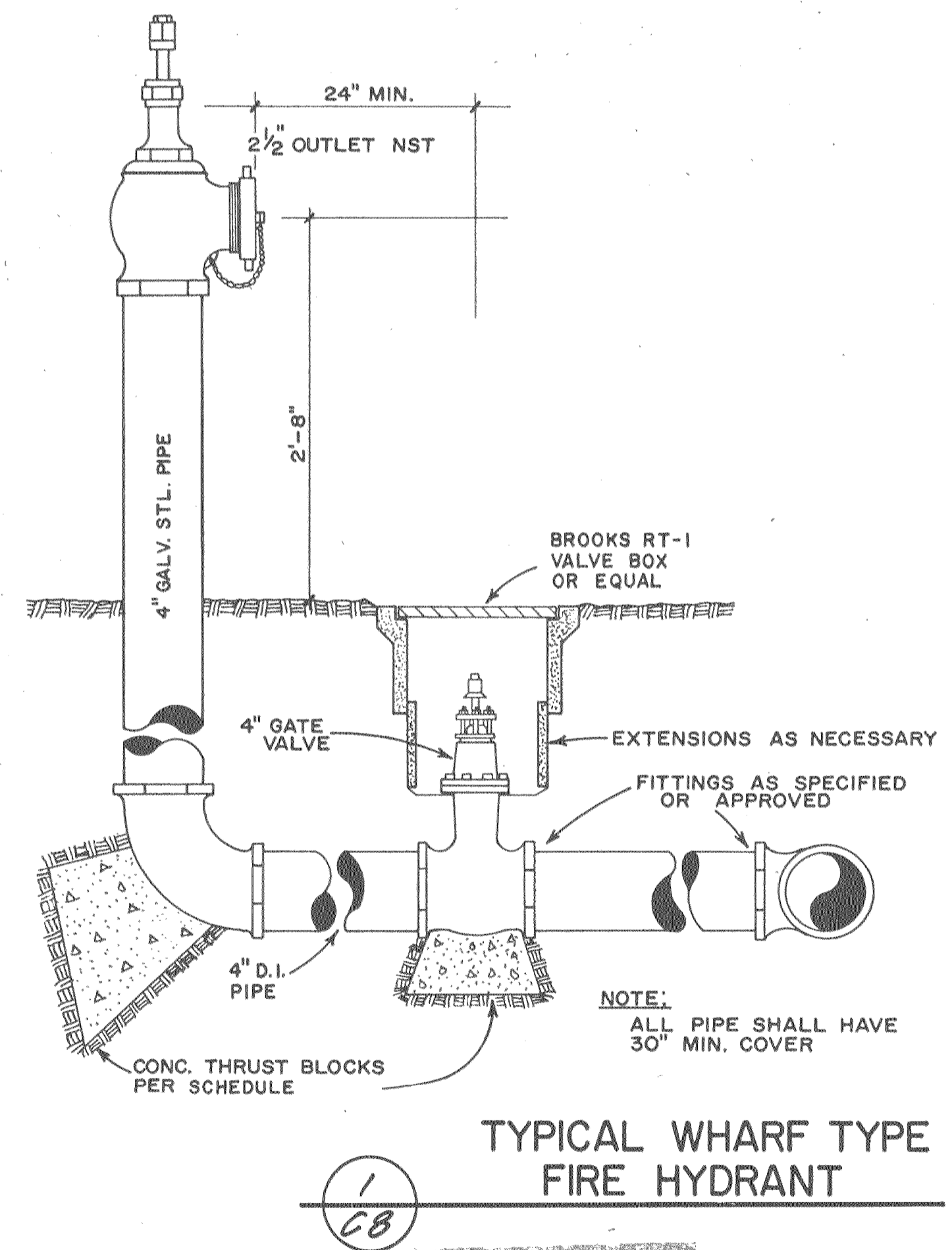
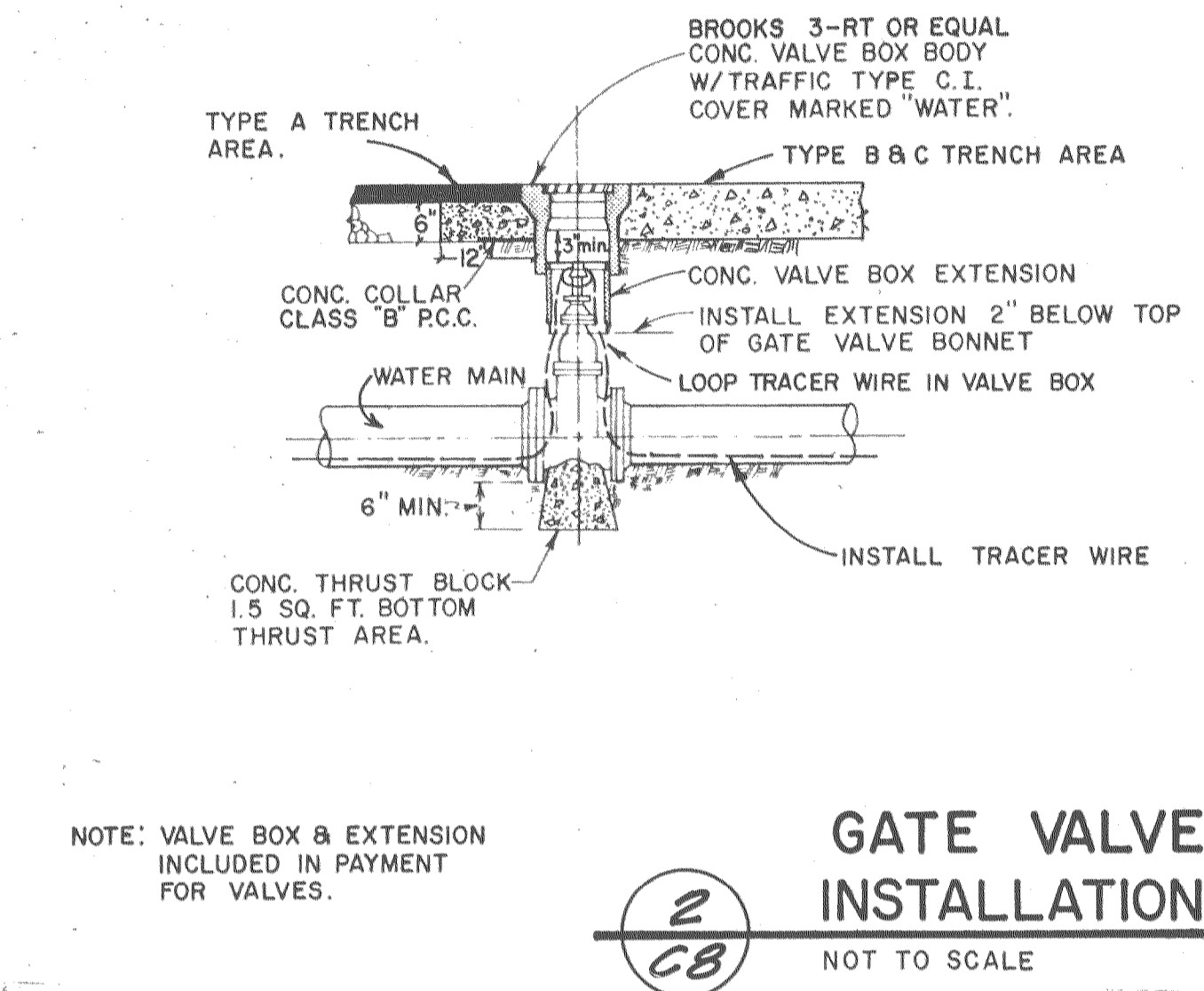
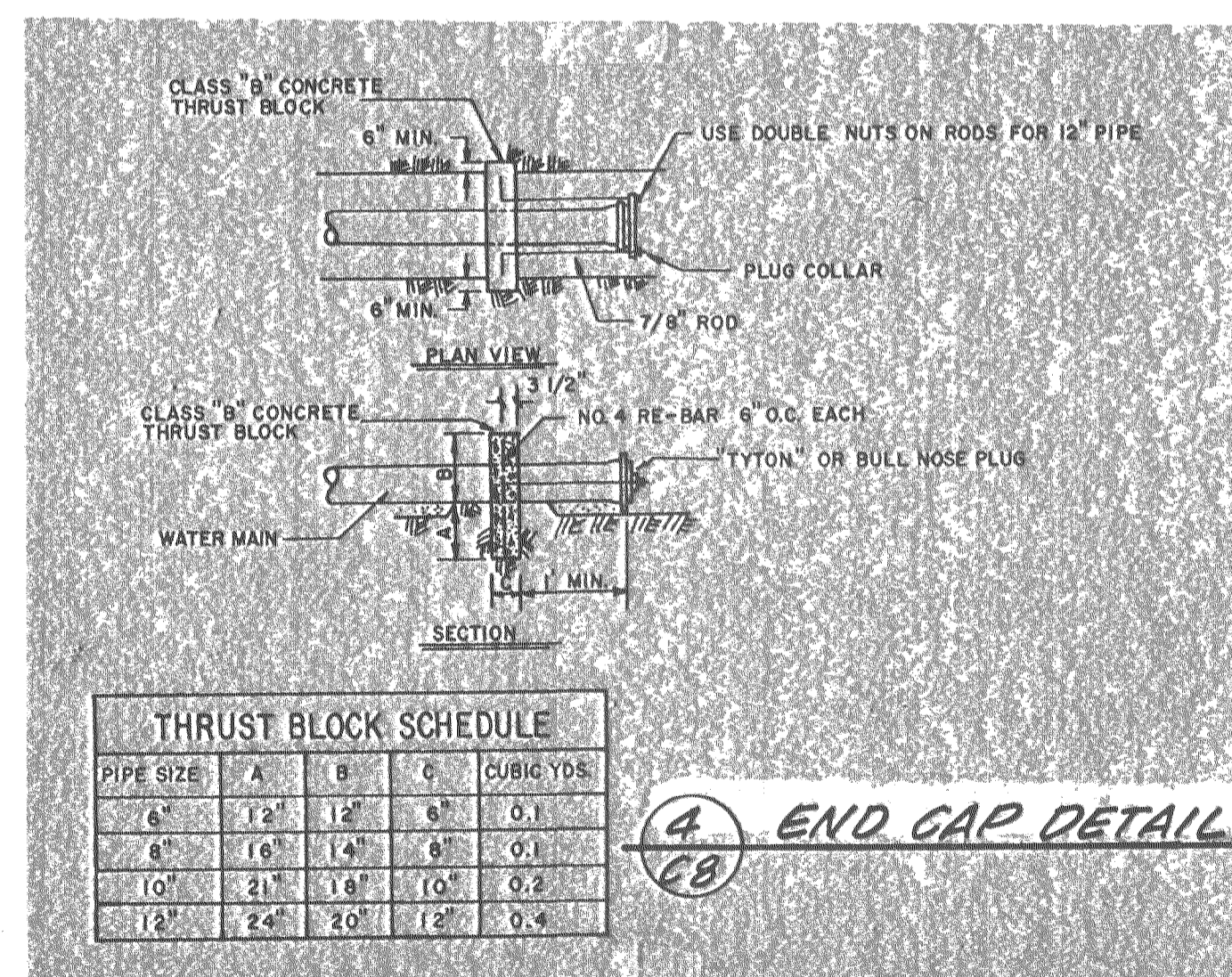
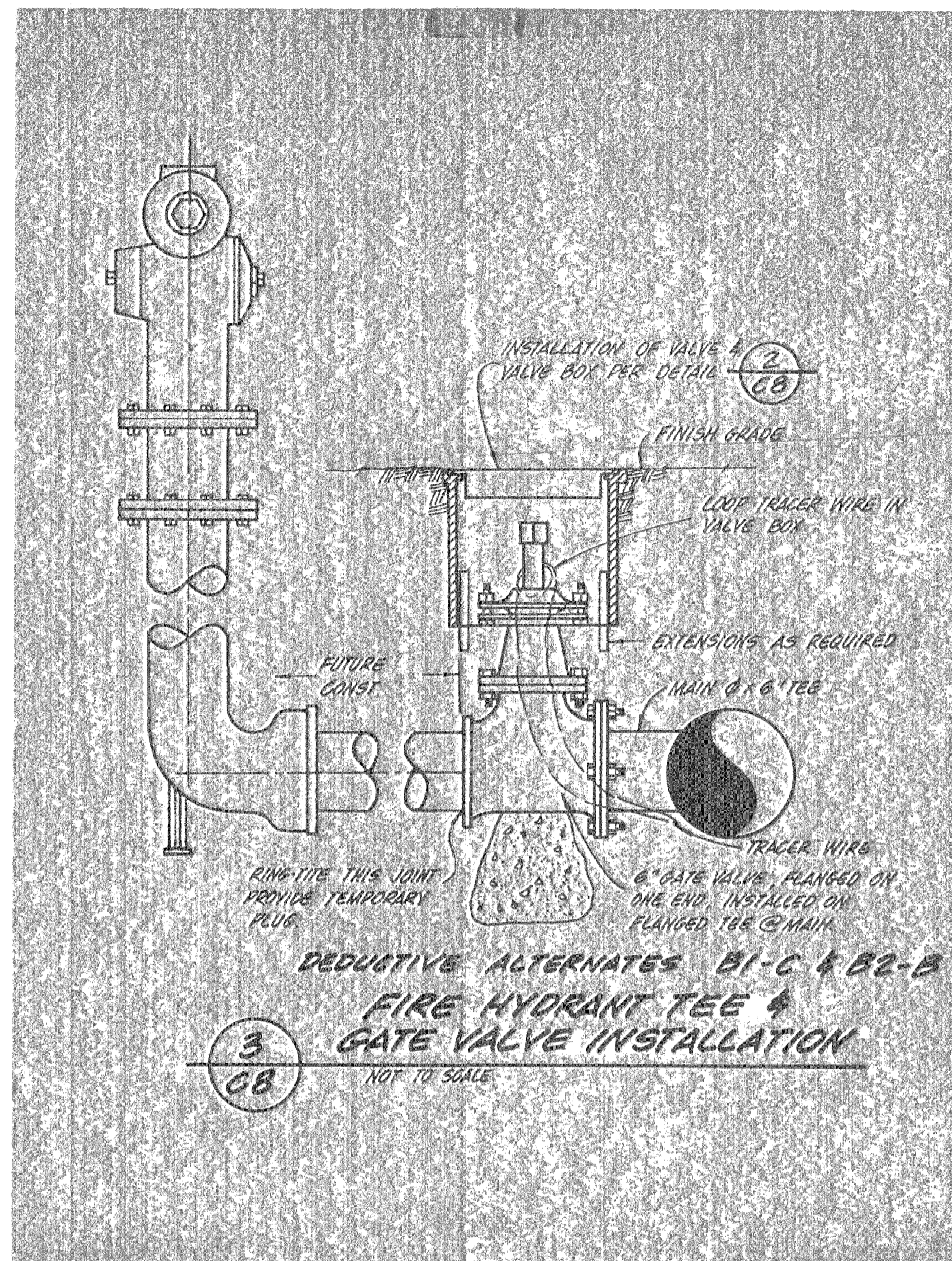


REQUIRED BEARING AREA — TOTAL SQUARE FEET							
TYPE OF FITTING	90° BEND	45° BEND	1 1/4" OR 22 1/2° BEND	TEE OR DEAD END	TEE	CROSS	CROSS
TYPICAL INSTALLATION							
SIZE OF PIPE	4"	1	1	2	2	2	2
	6"	2	1	3	4	4	4
	8"	4	2	5	7	7	7
	10"	6	3	8	12	12	12
	12"	10	5	12	16	16	16

NOTES: (1) THRUST BLOCKS TO BE CONSTRUCTED OF CLASS "B" CONCRETE.
 (2) AREAS GIVEN ARE FOR CLASS 150 PIPE AT TEST PRESSURE OF 150 P.S.I. IN SOIL WITH 2,000 P.S.F. BEARING CAPACITY.
 (3) BLOCKS TO BE POURED AGAINST UNDISTURBED SOIL.
 (4) JOINTS TO BE KEPT CLEAR OF CONCRETE.

THRUST BLOCK SCHEDULE



AS BUILT 7/6/01

COOK ASSOCIATES
ENGINEERING CONSULTANTS
2060 PARK AVENUE, OROVILLE, CALIFORNIA 95965

CITY OF OROVILLE
Industrial Unit No. 2
E.D.A. PROJECT NO. 07-01-02169
MISC. DETAILS - WATER



REVISION	DATE

S.J. & P.K.
DRAWN DATE
D.J.C. 2-80
APPROVED DATE
A-361
FILE NO.

SHEET NO.
C8
OF 27 SHTS
JOB NO. 79457