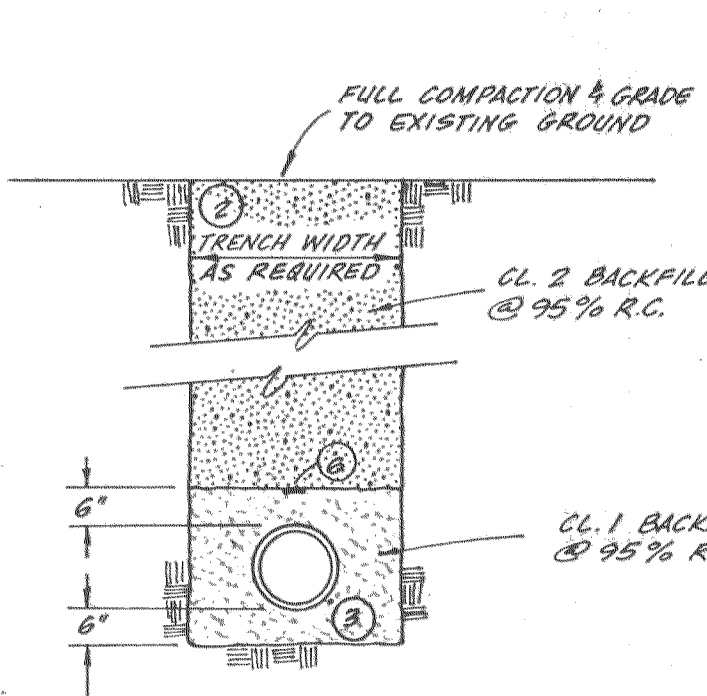
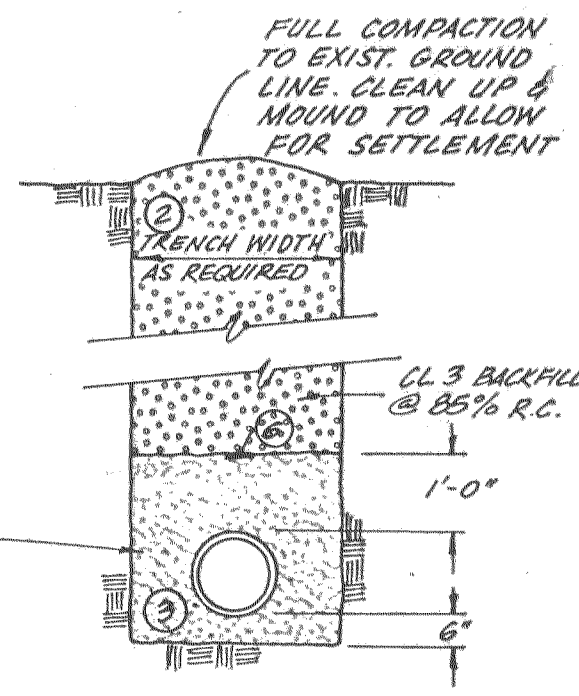


TYPE "A" TRENCH
(ALL TRENCH DEPTHS)

TYPE "B" TRENCH
(ALL TRENCH DEPTHS)



TYPE "C" TRENCH
(ALL TRENCH DEPTHS)

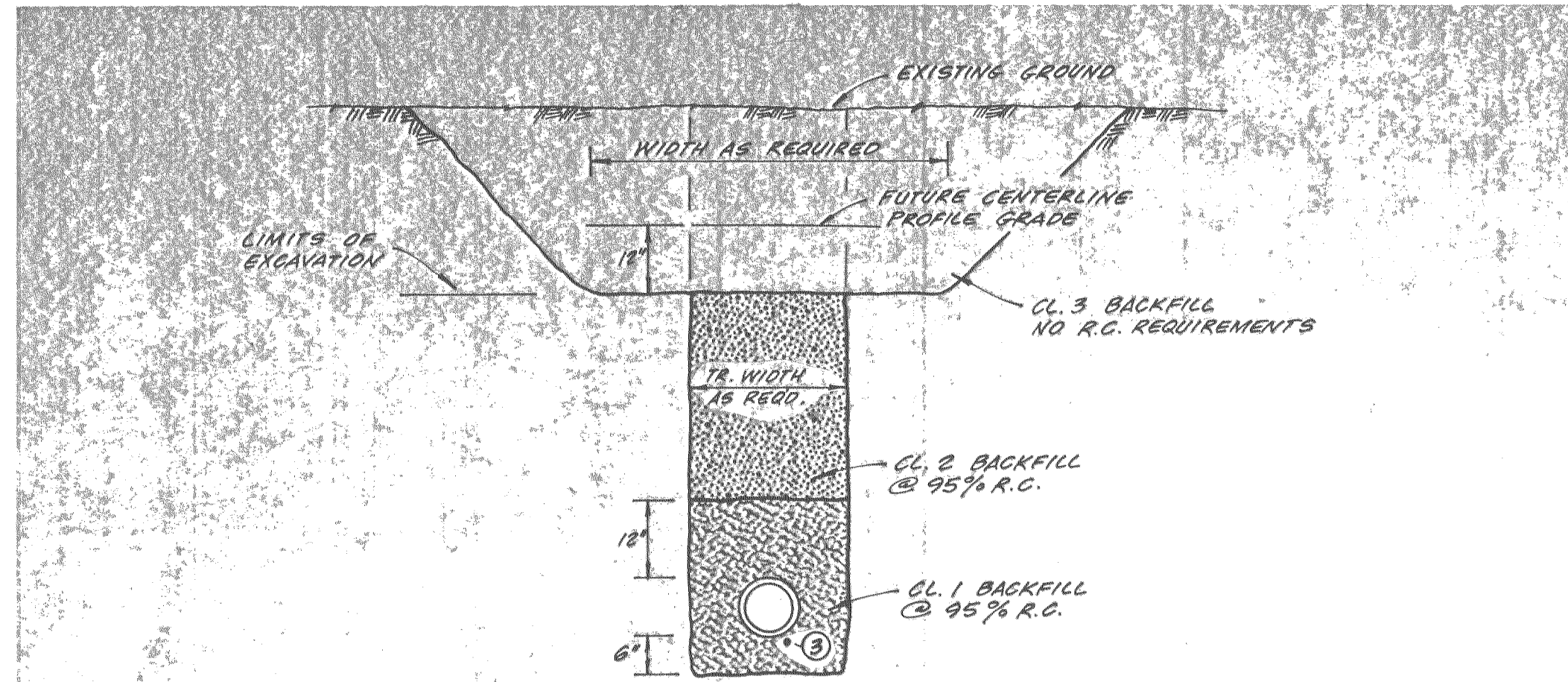


TYPE "D" TRENCH
(ALL TRENCH DEPTHS)

NOTES:

1. SAW CUT PRIOR TO TRENCHING
2. TRENCH RESTORATION SHALL EXTEND THE FULL WIDTH OF EXCAVATION
3. TRACER WIRE - WATERLINE INSTALLATION
4. TRENCH DEPTH VARIES. TRENCH BRACING OR SHORING AS REQUIRED BY THE "CONSTRUCTION SAFETY ORDERS", STATE DEPARTMENT OF INDUSTRIAL RELATIONS
5. REQUIRED BACKFILL:
CLASS 1 - ALL AREAS
CLASS 2 - WITHIN ROADWAY
CLASS 3 - OUTSIDE ROADWAY
6. LOCATING TAPE - SEWER FORCE MAIN (TOTAL LENGTH) & ALL SEWER LINES ABOVE WATER LINE CROSSINGS.

TRENCH WIDTH SCHEDULE	
PIPE DIAMETER	4" 6" 8" 10" 12"
TRENCH WIDTH	18" 20" 20" 24" 24"

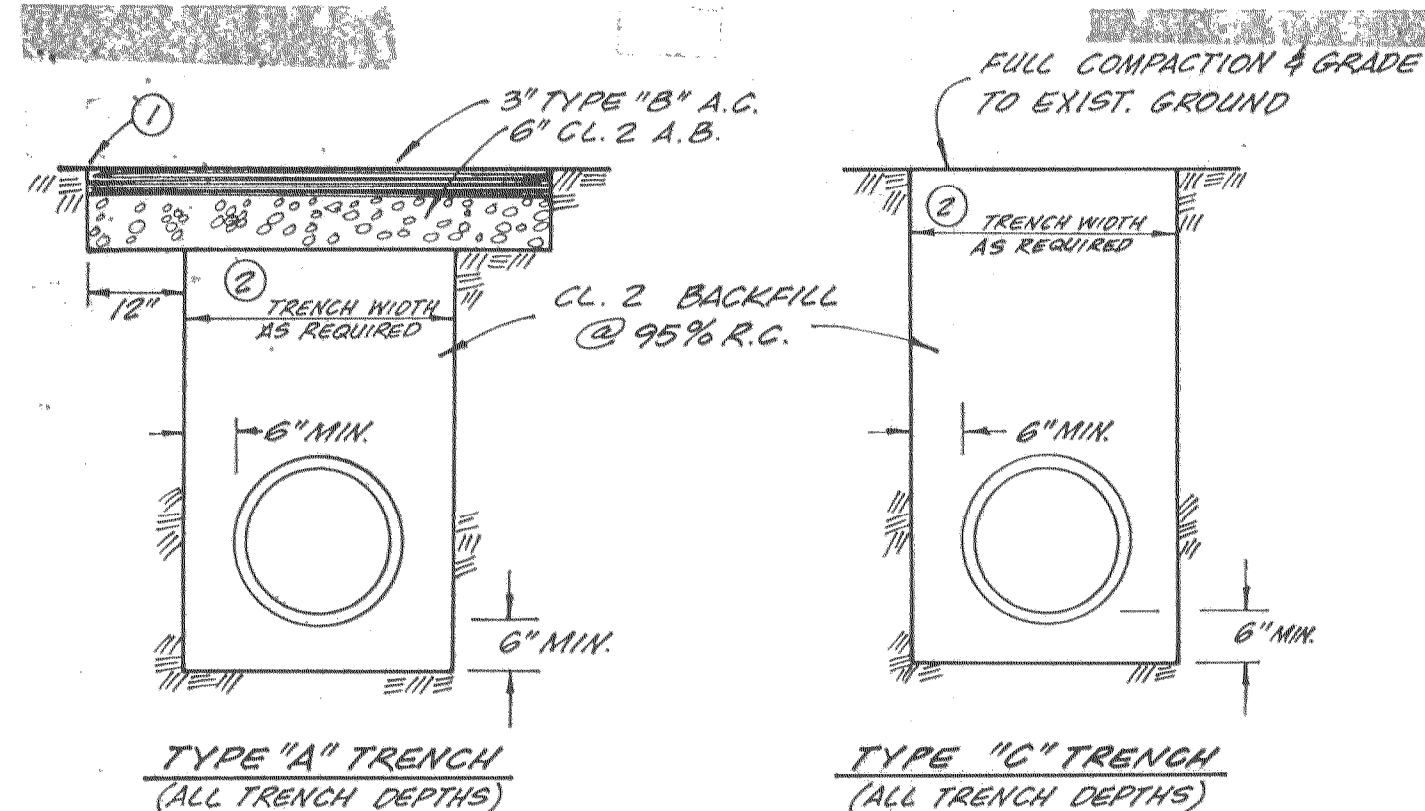


NOTE:
THE CONTRACTOR HAS THE OPTION OF TRENCHING THE FULL DEPTH FROM EXISTING GROUND OR MAY ROUGH EXCAVATE TO THE LIMITS SHOWN BEFORE TRENCHING. CL. 3 MATERIAL IN EXCESS OF BACKFILL REQUIREMENTS SHALL BE UNIFORMLY SPREAD ON SITE.

TYPE "C" TRENCH - SO. FIFTH AVE.
SCHEDULES A3 & B2

4
C7
NOT TO SCALE

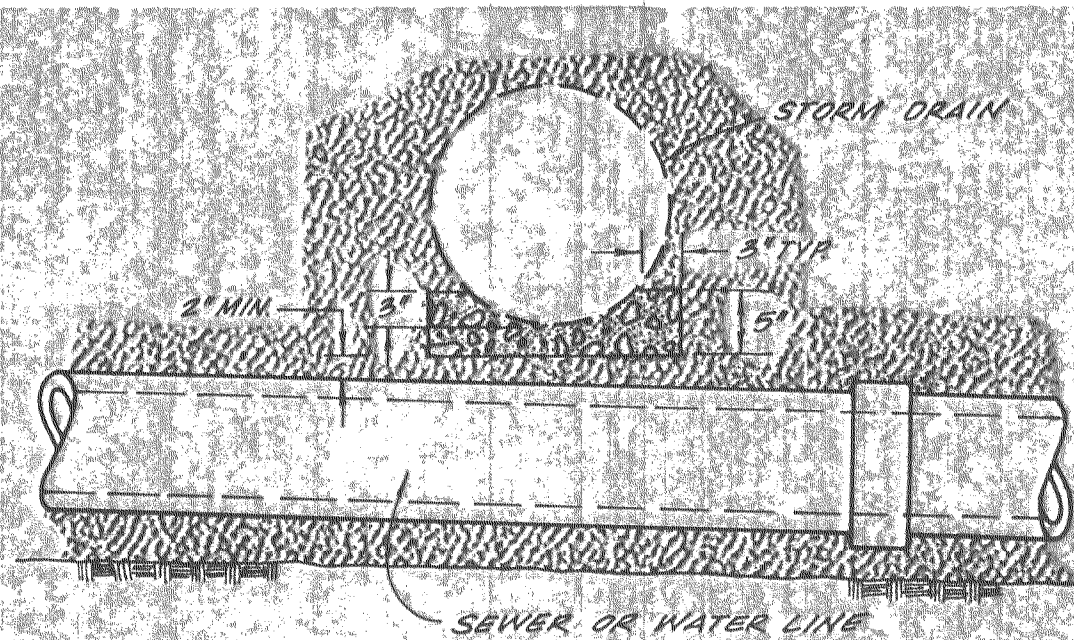
1
C7
TYPICAL SEWER & WATER TRENCH SECTIONS
NOT TO SCALE



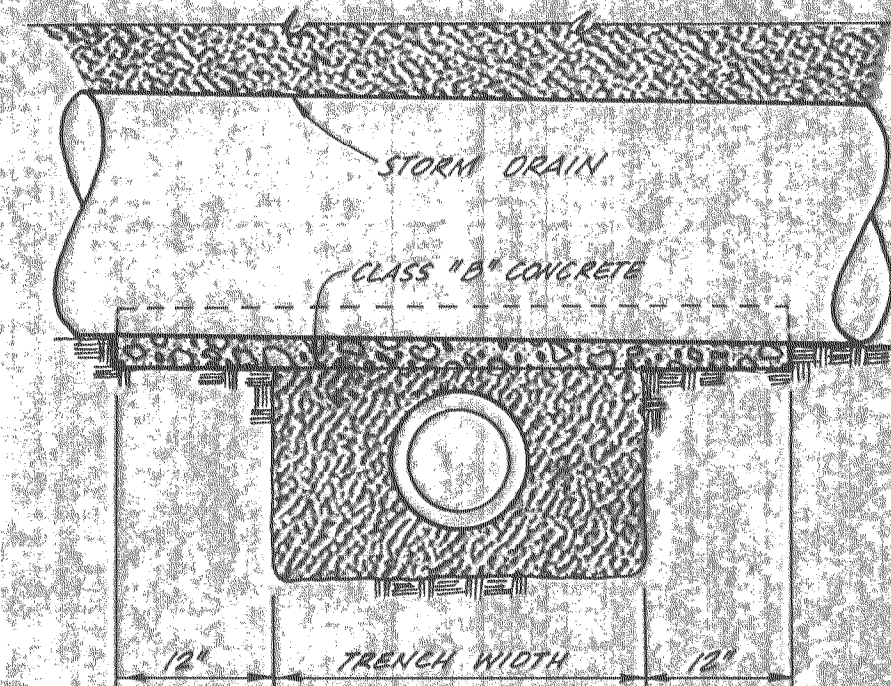
TYPE "A" TRENCH
(ALL TRENCH DEPTHS)

TYPE "C" TRENCH
(ALL TRENCH DEPTHS)

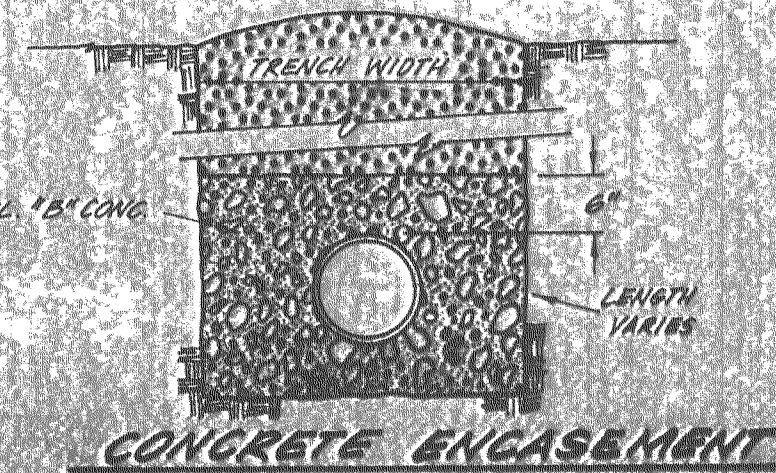
3
C7
TYPICAL TRENCH SECTIONS STORM DRAIN
NOT TO SCALE



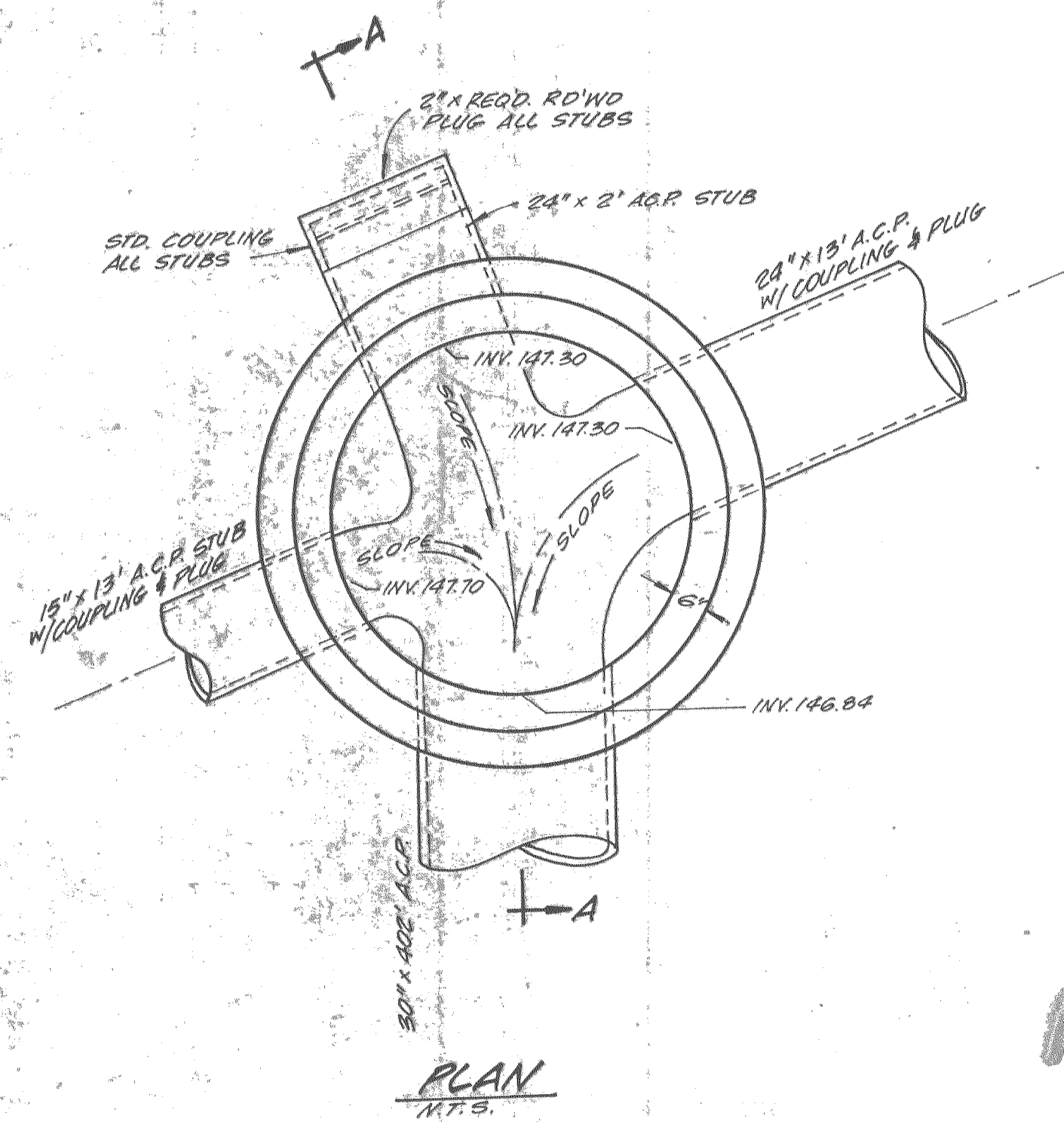
CROSSING BENEATH STORM DRAIN



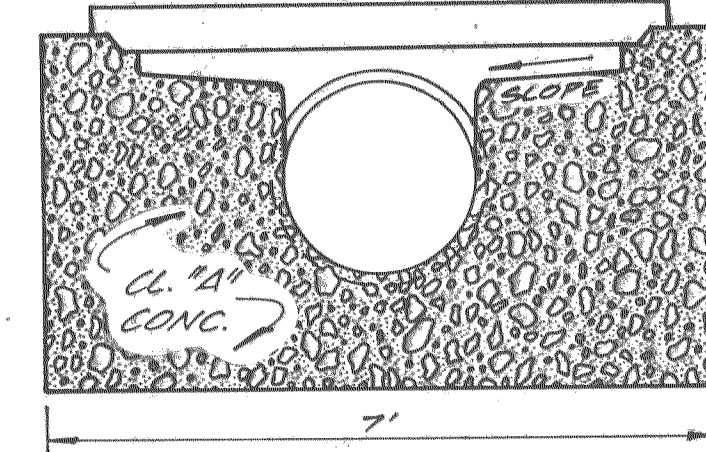
CONCRETE PROTECTION



CONCRETE ENGAGEMENT

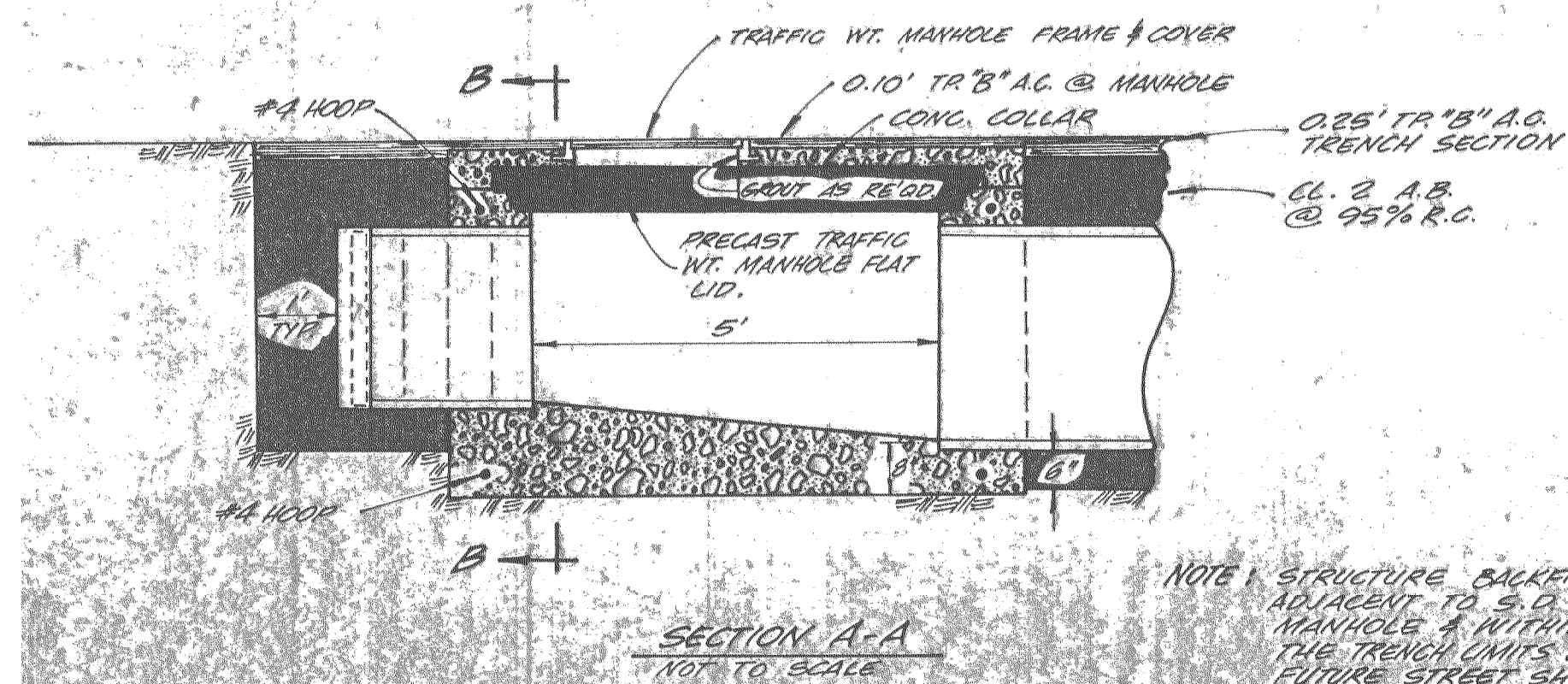


PLAN
NOT TO SCALE



SECTION B-B
NOT TO SCALE

AS BUILT 7/6/01



SECTION A-A
NOT TO SCALE

5
C7
STORM DRAIN MANHOLE
NOT TO SCALE

- NOTES:**
1. SAW CUT PRIOR TO TRENCHING
 2. TRENCH RESTORATION SHALL EXTEND THE FULL WIDTH OF EXCAVATION
 3. TRENCH DEPTH VARIES. TRENCH BRACING OR SHORING AS REQUIRED BY THE "CONSTRUCTION SAFETY ORDERS", STATE DEPARTMENT OF INDUSTRIAL RELATIONS
 4. REQUIRED BACKFILL - CLASS 2 - ALL AREAS

TRENCH WIDTH SCHEDULE	
PIPE DIAMETER	18" 18" 21" 24" 30" 36"
TRENCH WIDTH	21" 20" 24" 24" 30" 36"



REVISION	DATE

S. JACKSONE
DRAWN DATE 11/79
APPROVED DATE
A-361
FILE NO.
SHEET NO.
C7
OF 27 SHEETS
JOB NO. 79457