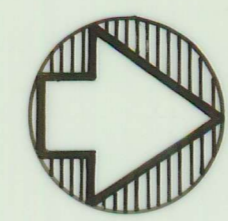
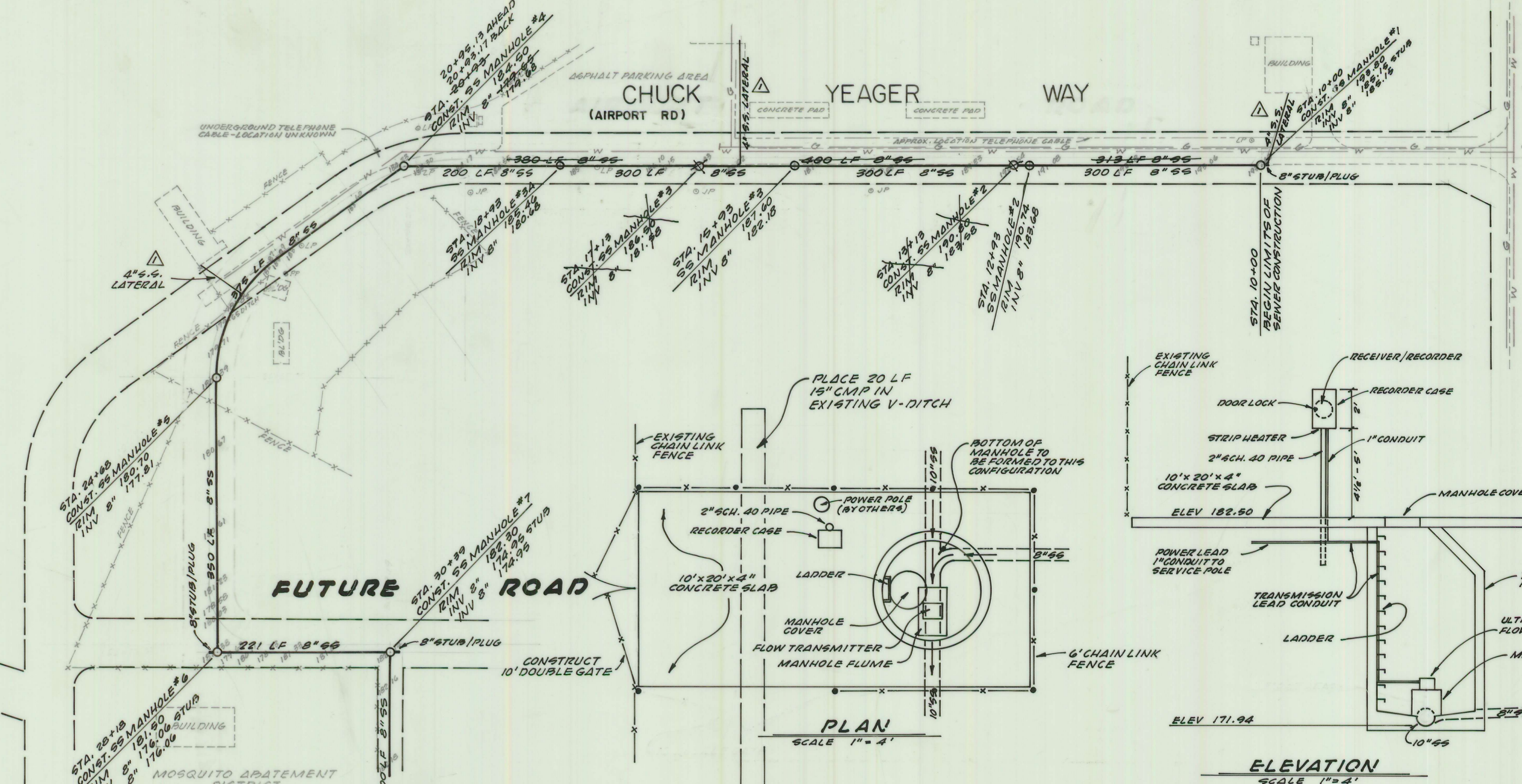
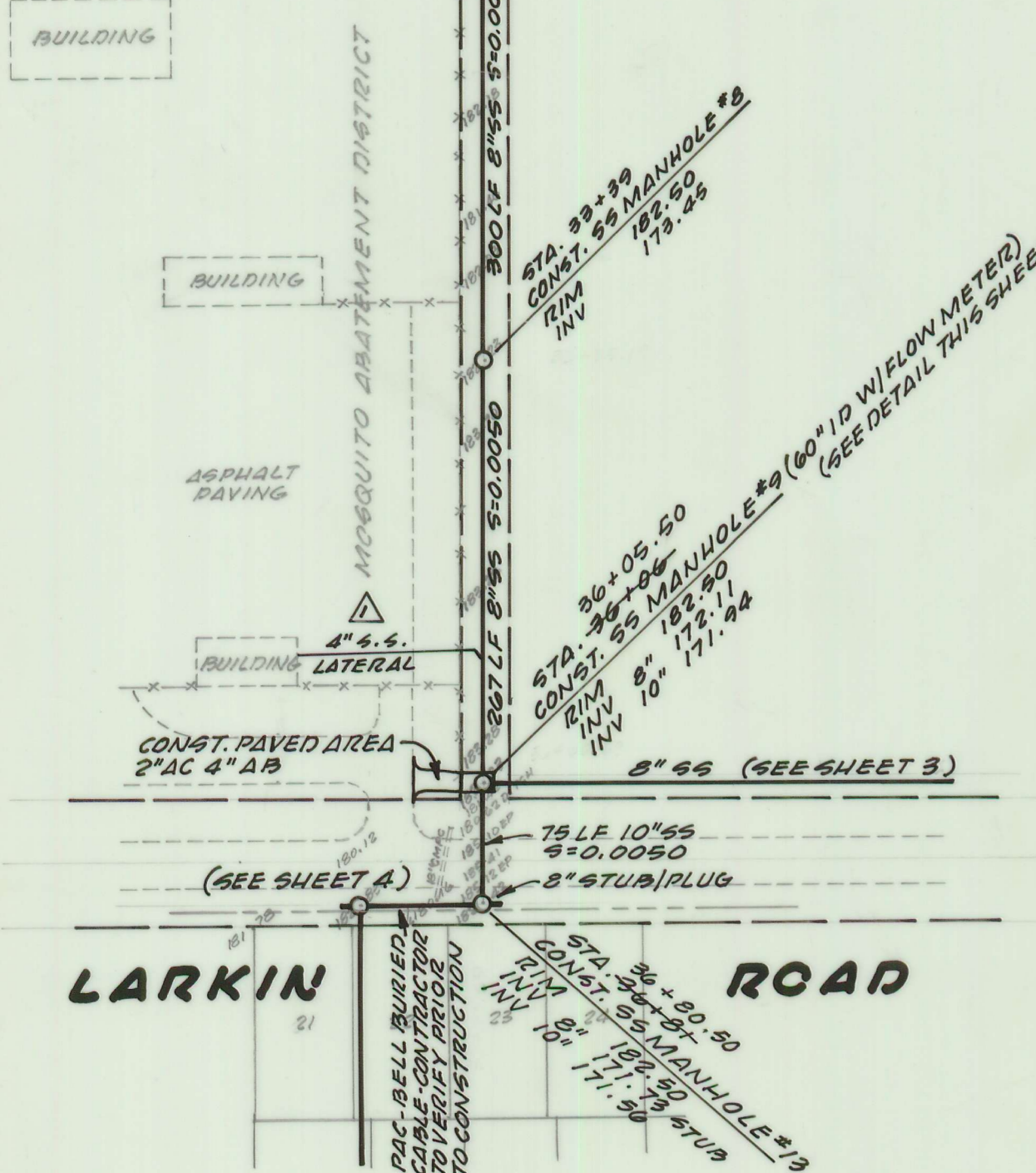


FUTURE ROAD



SCALE 1"=100'

CHUCK YEAGER WAY
(AIRPORT RD)



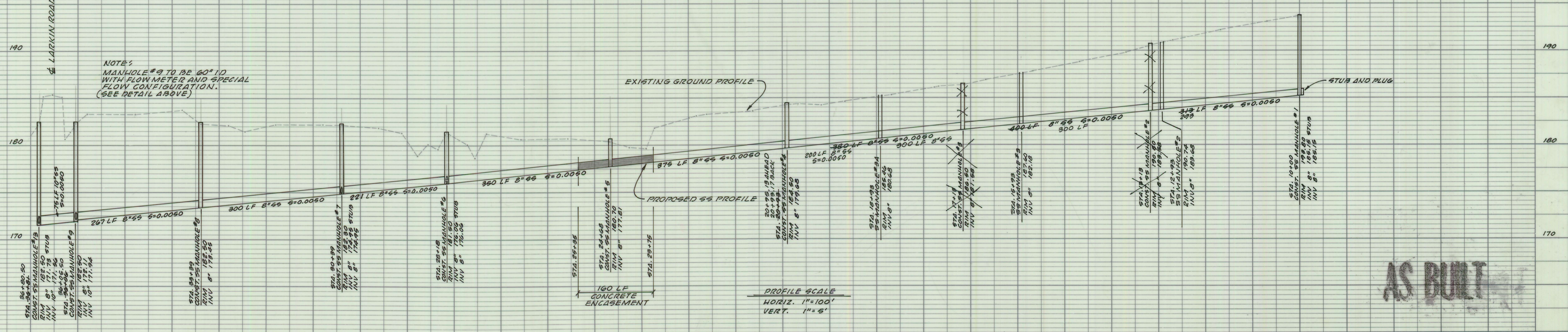
MANHOLE FLUME AND FLOW MEASUREMENT EQUIPMENT AT MANHOLE #9

LARKIN ROAD

FUTURE ROAD

Station	Proposed Sewer Line Invert Elevation	Existing Ground Elevation at Sewer Line
37	171.15	182.9
36	172.65	182.9
35	174.15	189.7
34	175.65	182.1
33	177.15	182.0
32	178.65	182.2
31	180.15	182.0
30	181.65	180.5
29	183.15	181.0
28	184.65	181.0
27	186.15	180.6
26	187.65	180.5
25	189.15	179.6
24	190.65	182.8
23	192.15	183.5
22	193.65	184.2
21	195.15	184.4
20	196.65	185.2
19	198.15	185.9
18	199.65	186.5
17	201.15	187.5
16	202.65	188.5
15	204.15	189.5
14	205.65	190.7
13	207.15	191.8
12	208.65	192.8
11	210.15	193.7
10	211.65	

NOTE: MANHOLE #9 TO BE 60" ID WITH FLOW METER AND SPECIAL FLOW CONFIGURATION. (SEE DETAIL ABOVE)



AS BUILT

<p>DATE: 1/15/14</p> <p>REVISION: AS BUILT</p> <p>BY: [Signature]</p>	<p>FIELD BOOK</p> <p>ELEVATION DATUM</p>	<p>DRAWN: LANE</p> <p>DESIGNED: [Signature]</p> <p>CHECKED: A.C.B.</p> <p>SCALE: AS SHOWN</p>	<p>APPROVED: [Signature]</p> <p>DATE: [Blank]</p>	<p>Barnhart Brown & Associates</p> <p>A CALIFORNIA CORPORATION</p> <p>P.O. Box 1576, Oroville, CA 95965, 916/534-1911</p> <p>CIVIL ENGINEERS • LAND SURVEYORS</p>	<p>CITY OF GROVILLE</p> <p>CROVILLE MUNICIPAL AIRPORT</p> <p>SEWER EXTENSION</p>	<p>SHEET 2 OF 5</p> <p>JOB NO: 85110</p>
---	--	---	---	---	--	--