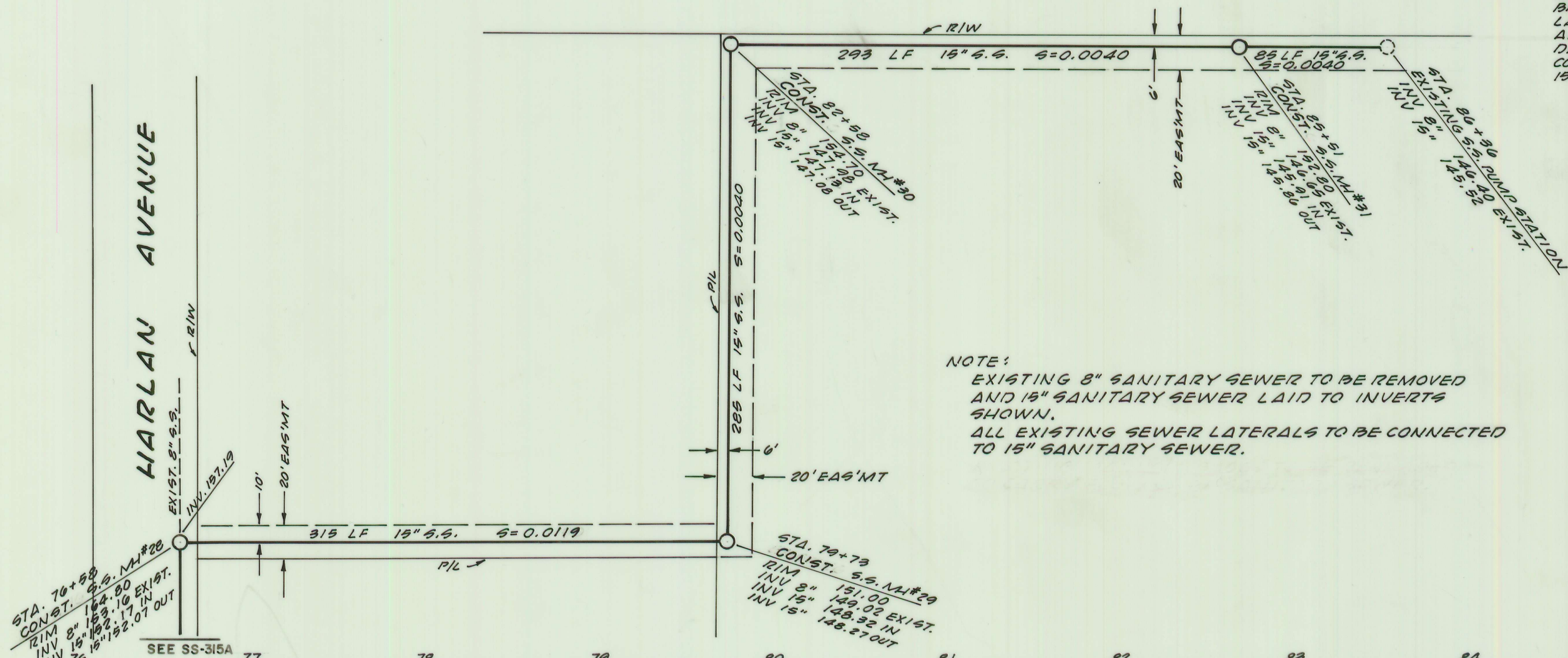




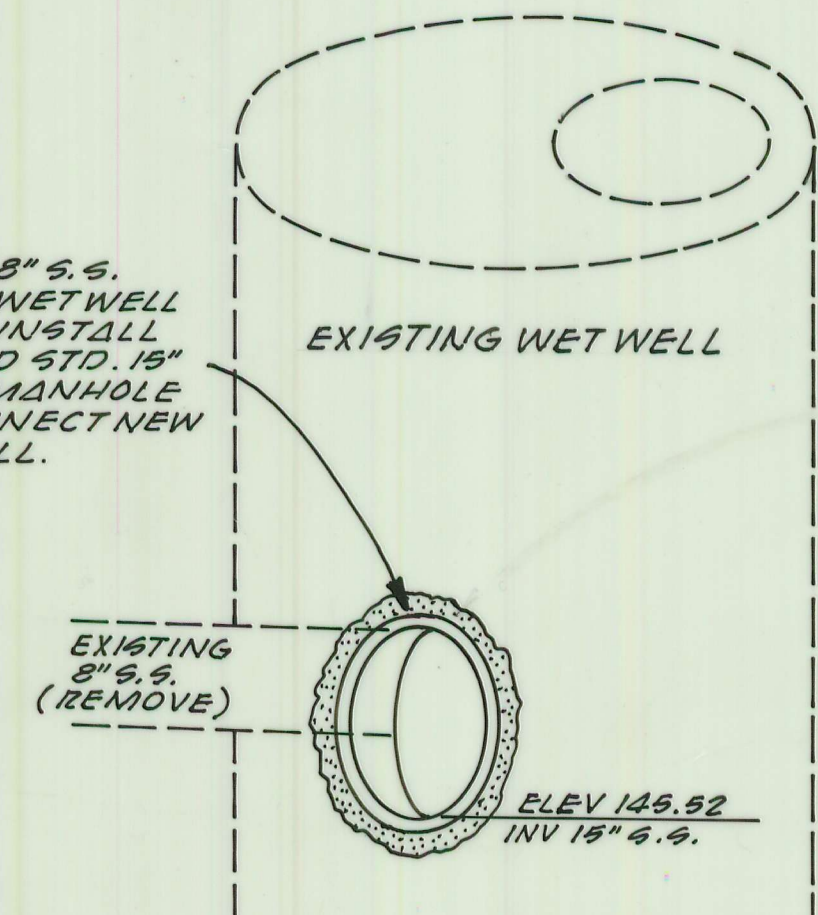
SCALE 1"=50'

ORO DAM BOULEVARD (HWY 162)

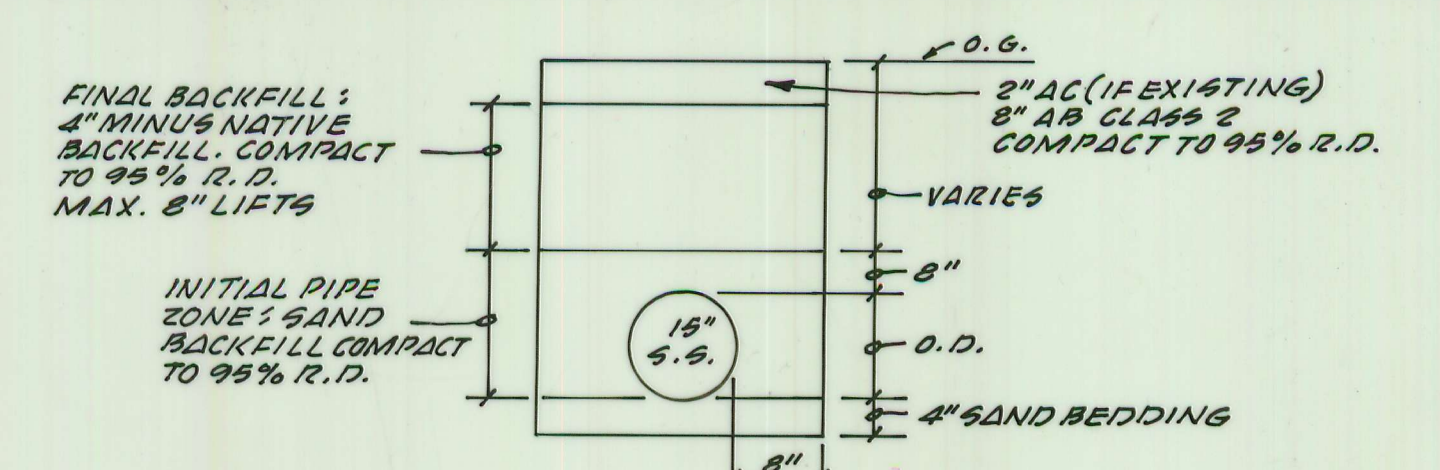


NOTE:
 EXISTING 8" SANITARY SEWER TO BE REMOVED
 AND 15" SANITARY SEWER LAID TO INVERTS
 SHOWN.
 ALL EXISTING SEWER LATERALS TO BE CONNECTED
 TO 15" SANITARY SEWER.

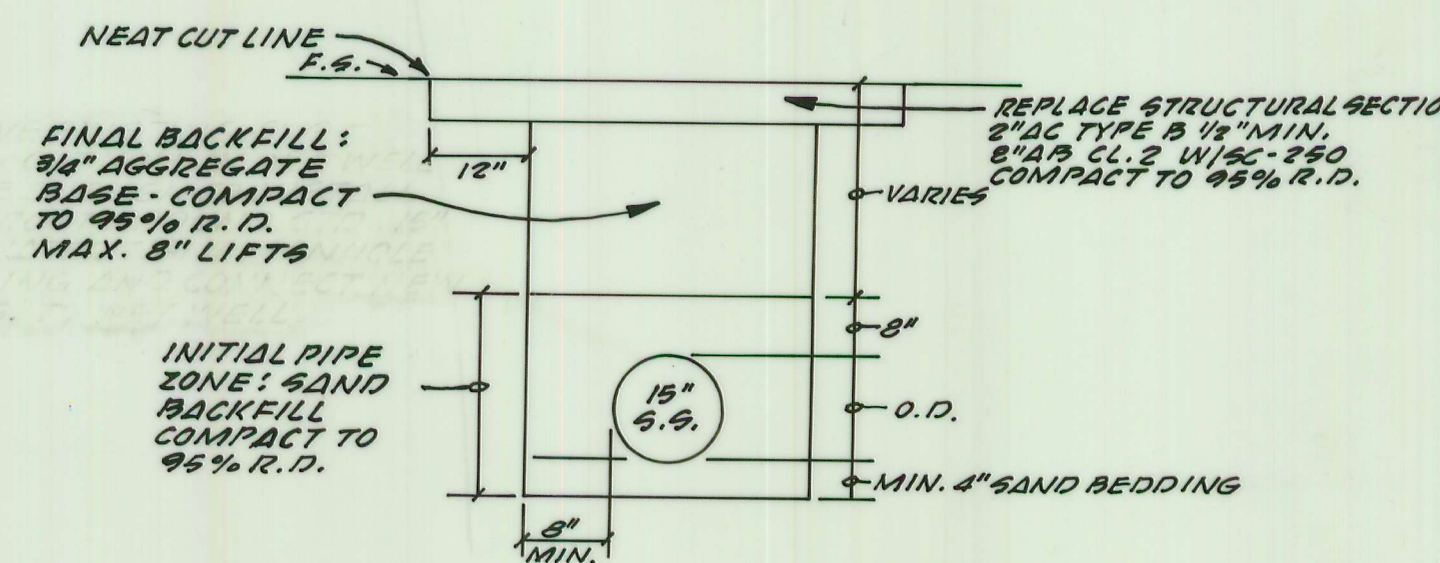
REMOVE EXISTING 8" S.S.
 BREAK OUT HOLE IN WET WELL
 LARGE ENOUGH TO INSTALL
 AND GROUT AROUND STD. 15"
 DIA. WATER TIGHT MANHOLE
 COUPLING AND CONNECT NEW
 15" S.S. TO WET WELL.



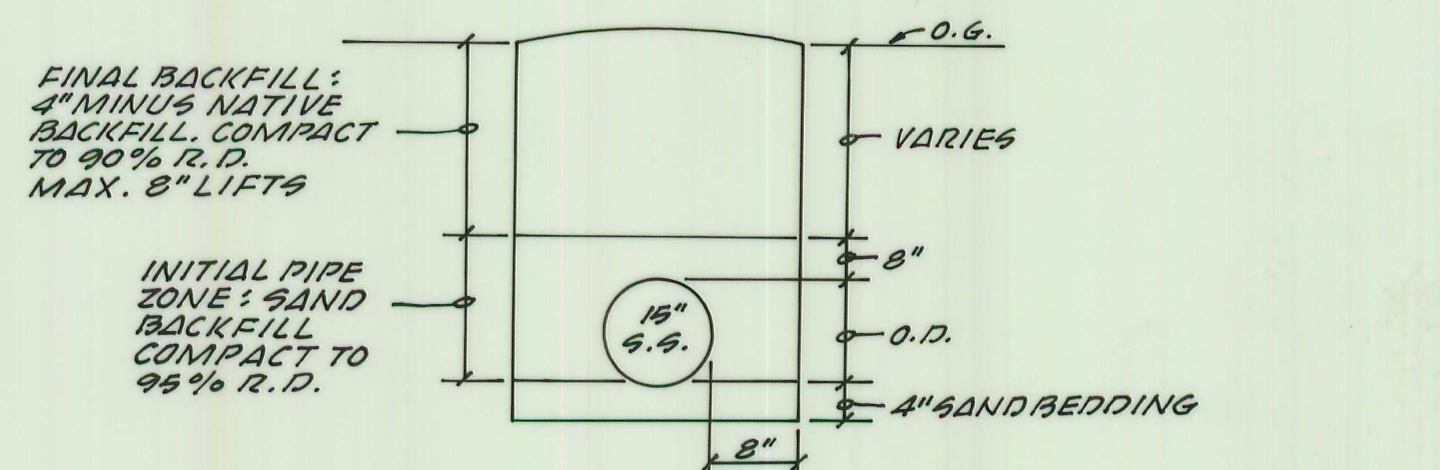
15" S.S. CONNECTION AT EXISTING WET WELL



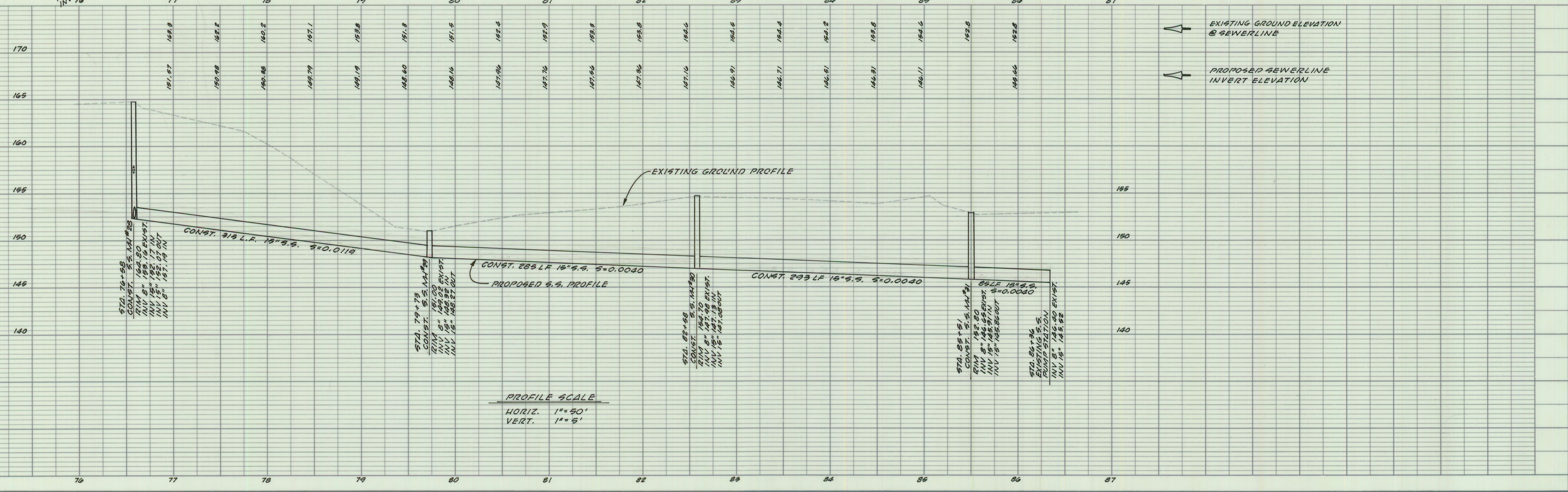
TYPICAL TRENCH SECTION WITHIN EXISTING DRIVEWAYS



TYPICAL TRENCH SECTION WITHIN EXISTING STREET PAVEMENT



TYPICAL TRENCH SECTION OUTSIDE EXISTING STREET



PROFILE SCALE
 HORIZ. 1"=50'
 VERT. 1"=5'

EXISTING GROUND ELEVATION @ SEWERLINE
 PROPOSED SEWERLINE INVERT ELEVATION

FIELD BOOK		DRAWN		Barnhart Brown & Associates		OROVILLE MUNICIPAL AIRPORT SEWER EXTENSION PHASE 2		SHEET 2 OF 2	
ELEVATION DATUM		LANE		A CALIFORNIA CORPORATION		916/534-1911		JOB NO 85110	
DATE		CHECKED		P.O. Box 1576		916/534-1911		SS 315B	
REVISION		A.G.B.		Oroville, CA 95965		CIVIL ENGINEERS			
BY		SCALE		LAND SURVEYORS					
APP'D		AS SHOWN		APPROVED		DATE			