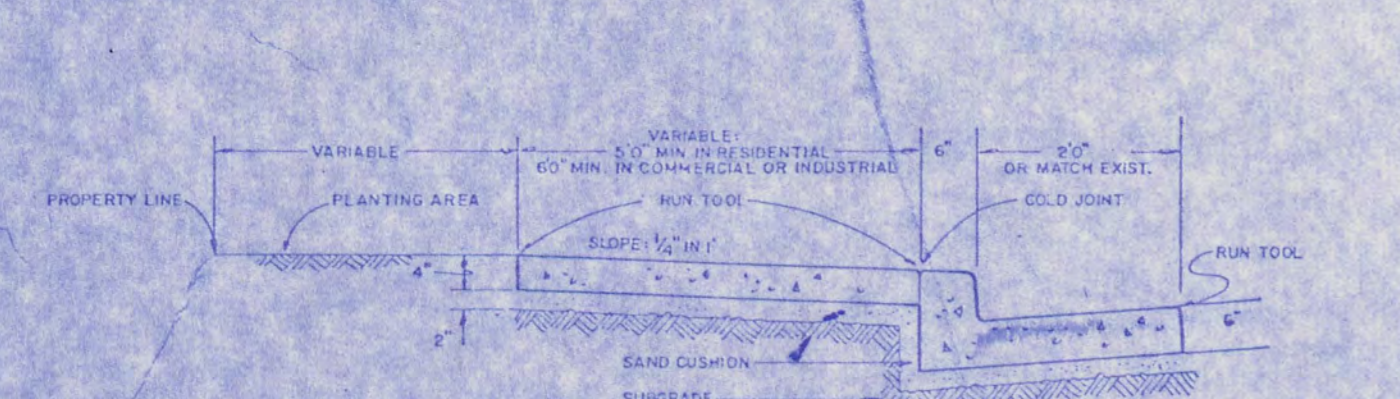


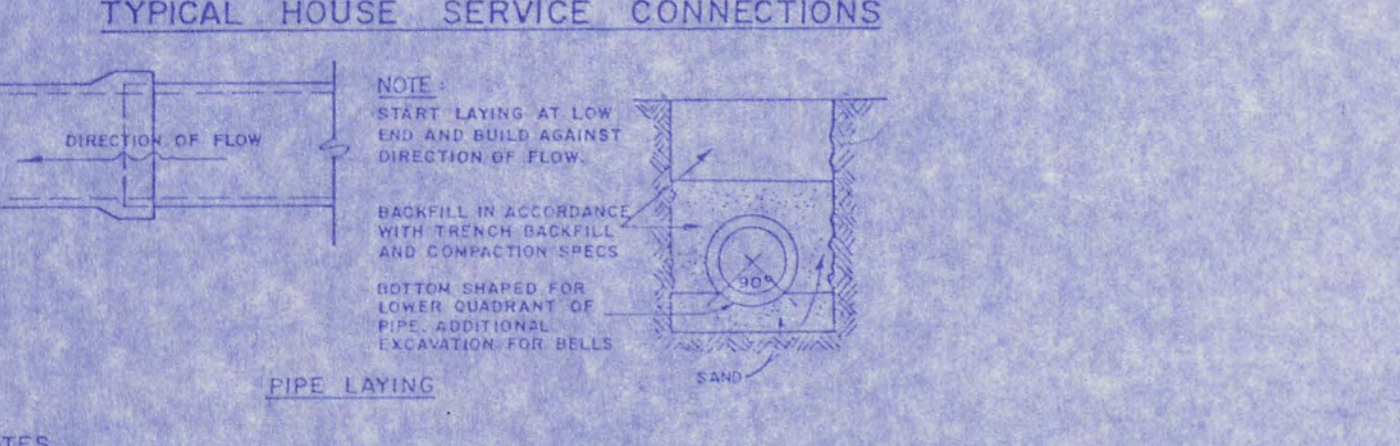
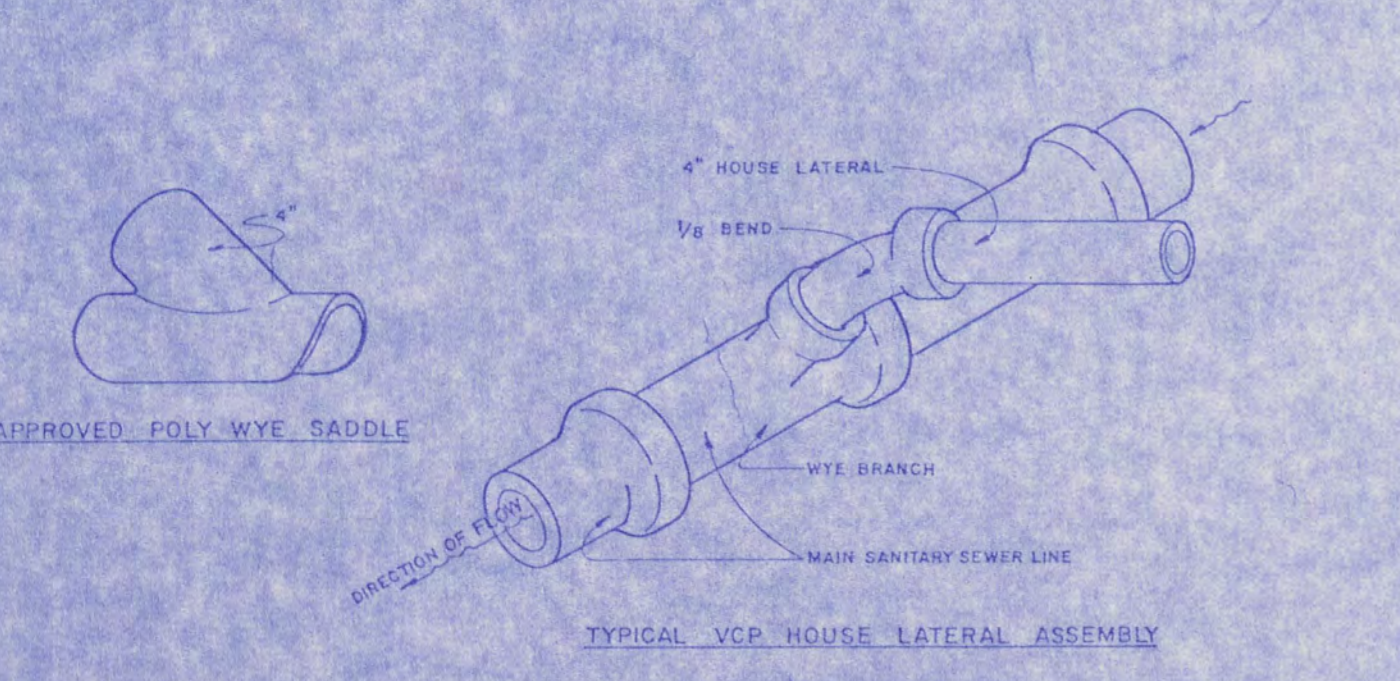
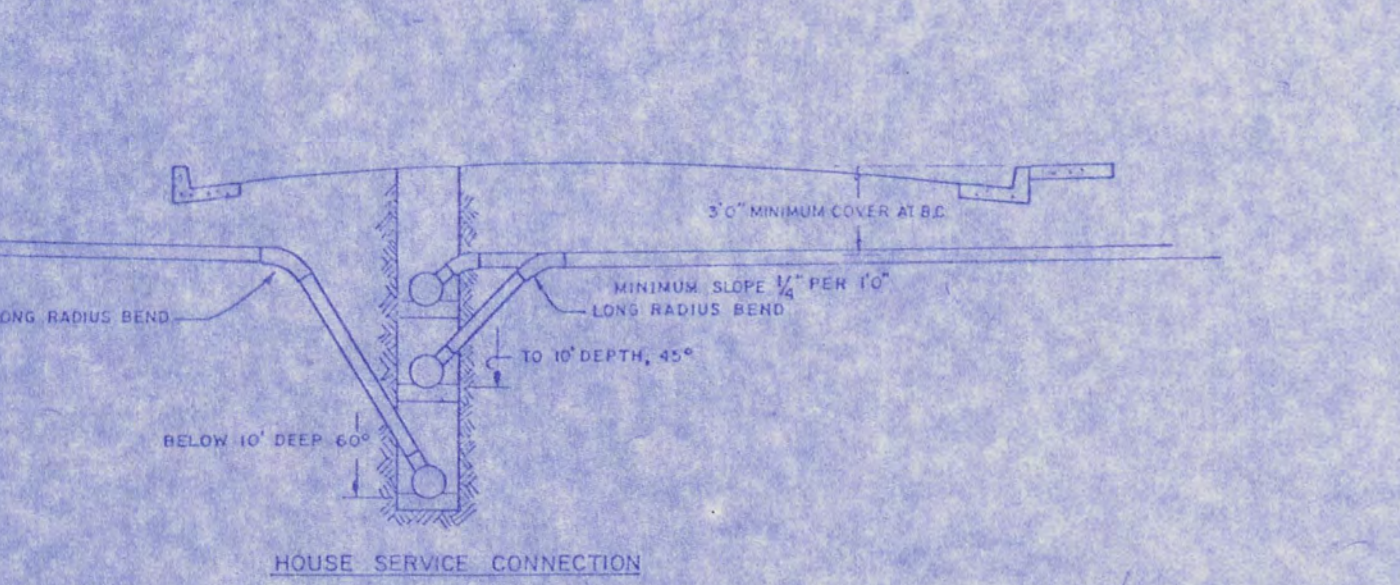
NOTES

- IF IN GOOD CONDITION, EXISTING 4" PCC MAY REMAIN AT OPTION OF INSPECTOR. PCC TO BE REMOVED SHALL BE SAWCUT.
- CLASS B CONCRETE SHALL BE USED UNLESS OTHERWISE SPECIFIED.
- DRIVE AND SIDEWALK TO BE BROOM FINISHED.
- DRIVE APPROACH SUBGRADE TO BE COMPACTED TO 95%.

DRIVE APPROACH STANDARD 5T-14



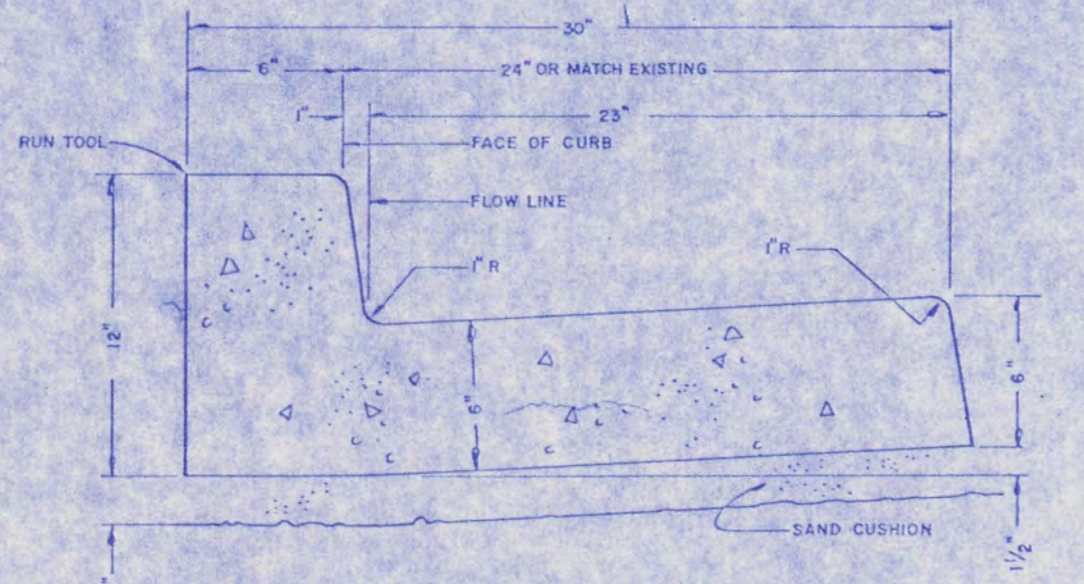
CURB, GUTTER AND SIDEWALK 5T-02



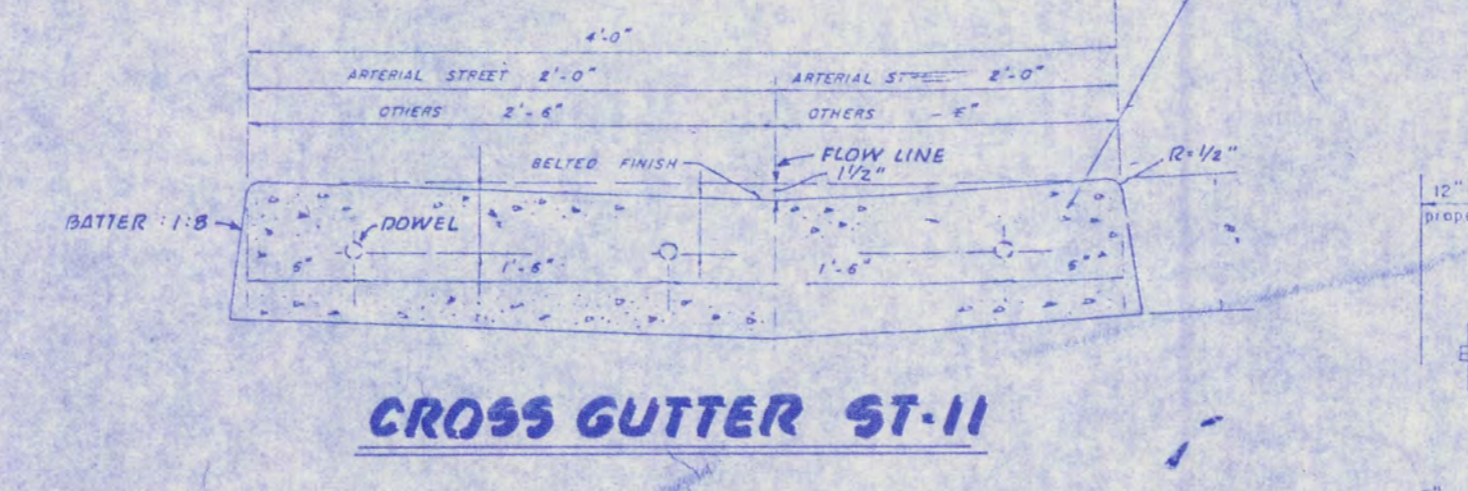
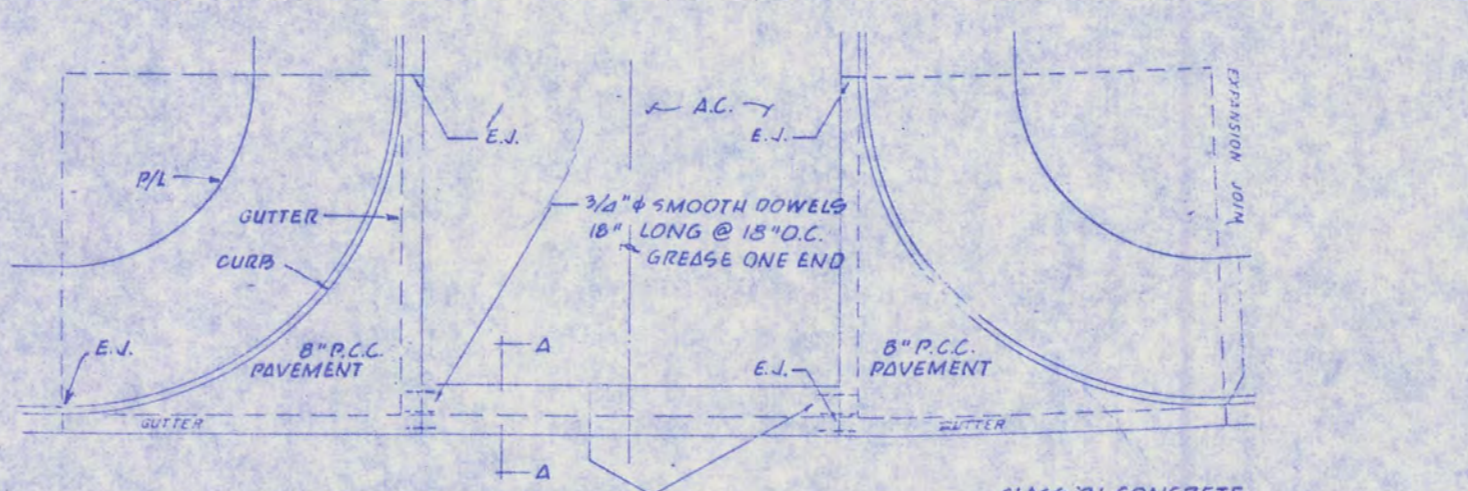
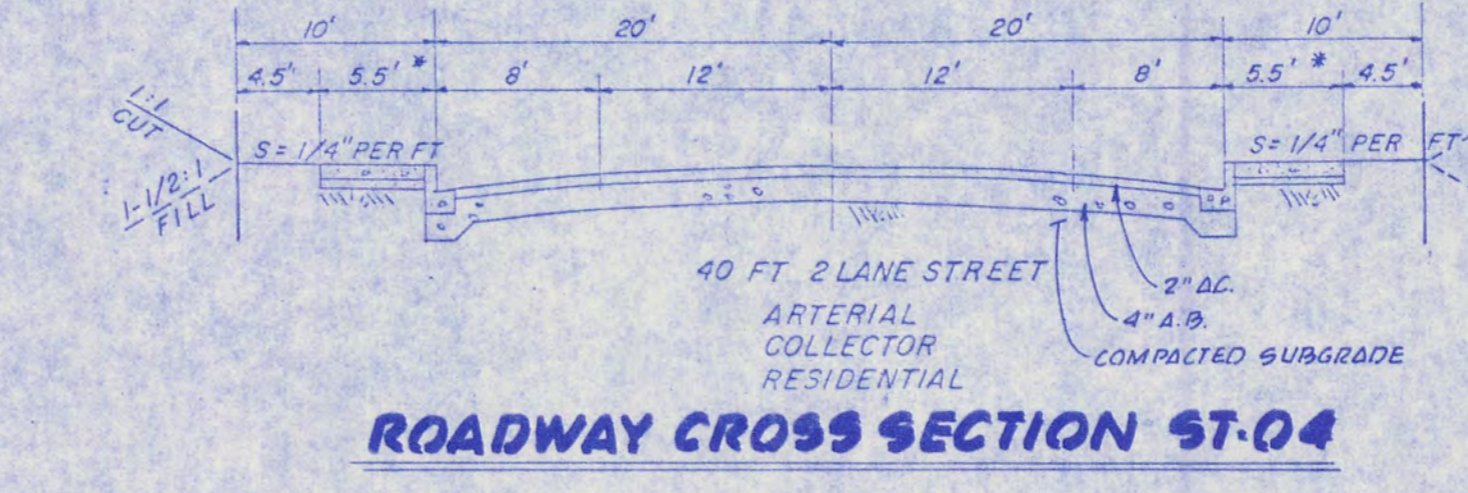
SEWER SERVICE CONNECTION 55-01

NOTES

- SAND BED MUST BE LAID EXPOSED PIPE
- PIPE MAY BE SHADDED BEFORE INSPECTION
- ALL CONSTRUCTION USE NO FABRICATED JOINTS
- 4" MINIMUM HOUSE SERVICE LINE
- ALL NEW MAINS WILL BE WATER OR AIR TESTED BY CONTRACTOR
- LATERAL MUST HAVE A MINIMUM 4" SAND ENCASUREMENT
- SPECIAL CONDITION REQUIREMENTS MUST MEET DEPARTMENTAL APPROVAL



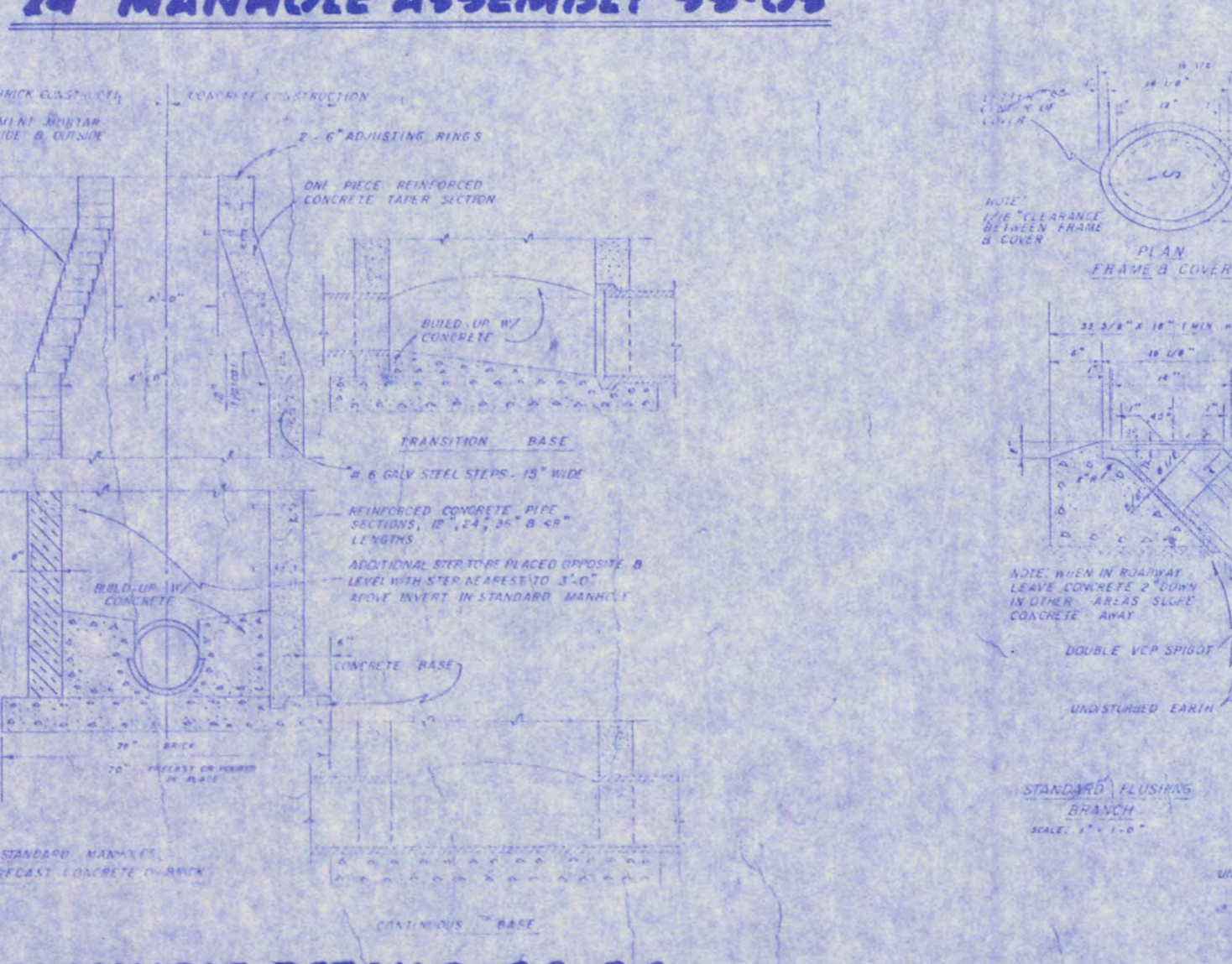
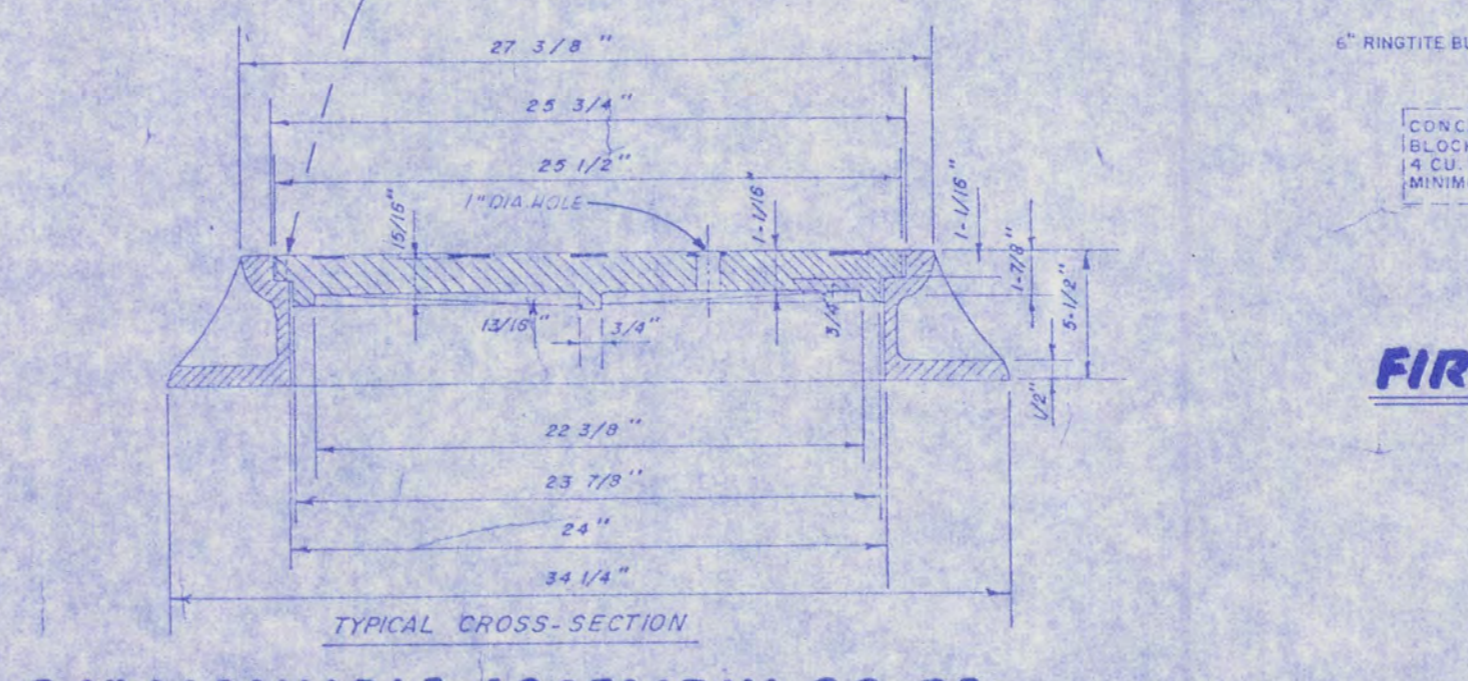
VERTICAL CURB AND GUTTER 5T-01



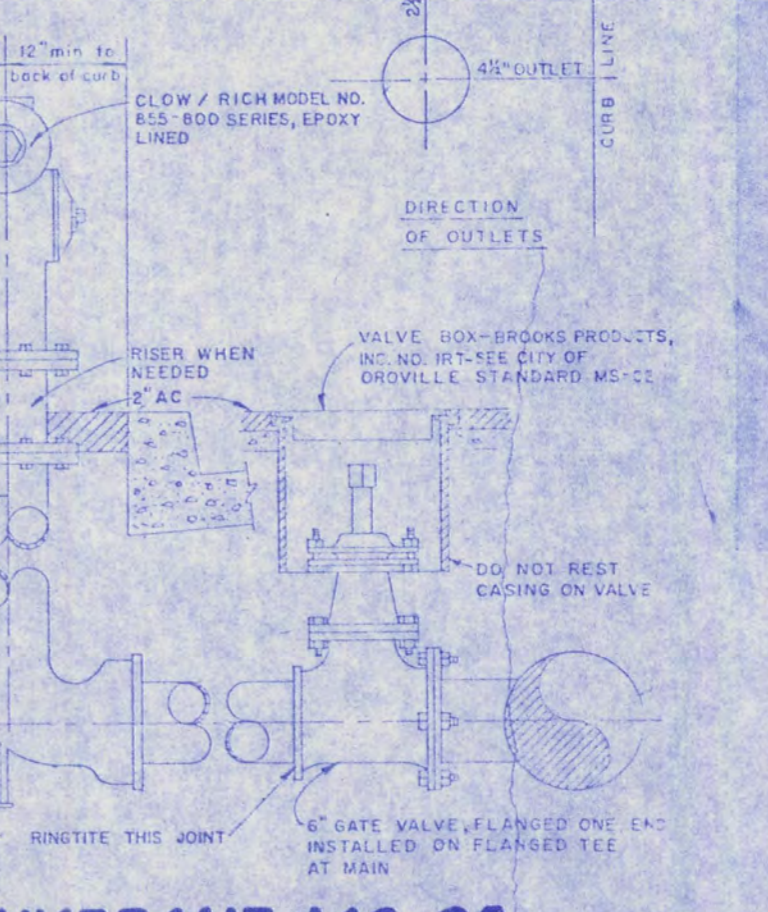
NOTE: MANHOLE ASSEMBLY CAST IRON, NO. 4-163, PHIKERTON FOUNDRY OR EQUIVALENT

PLAN

9/16" PICK-HOLE



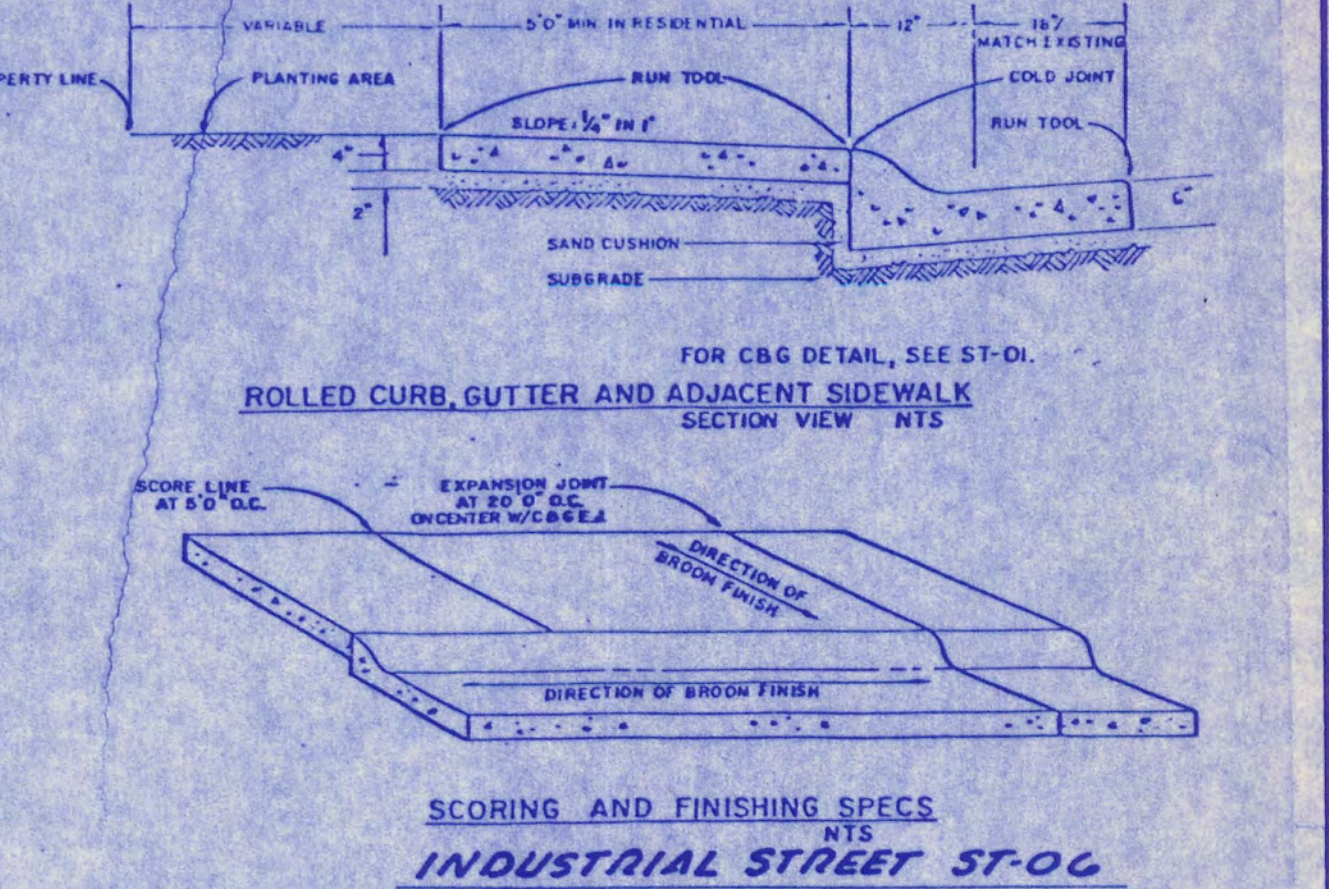
SANITARY SEWER CLEAN OUT 55-06



FIRE HYDRANT 55-05



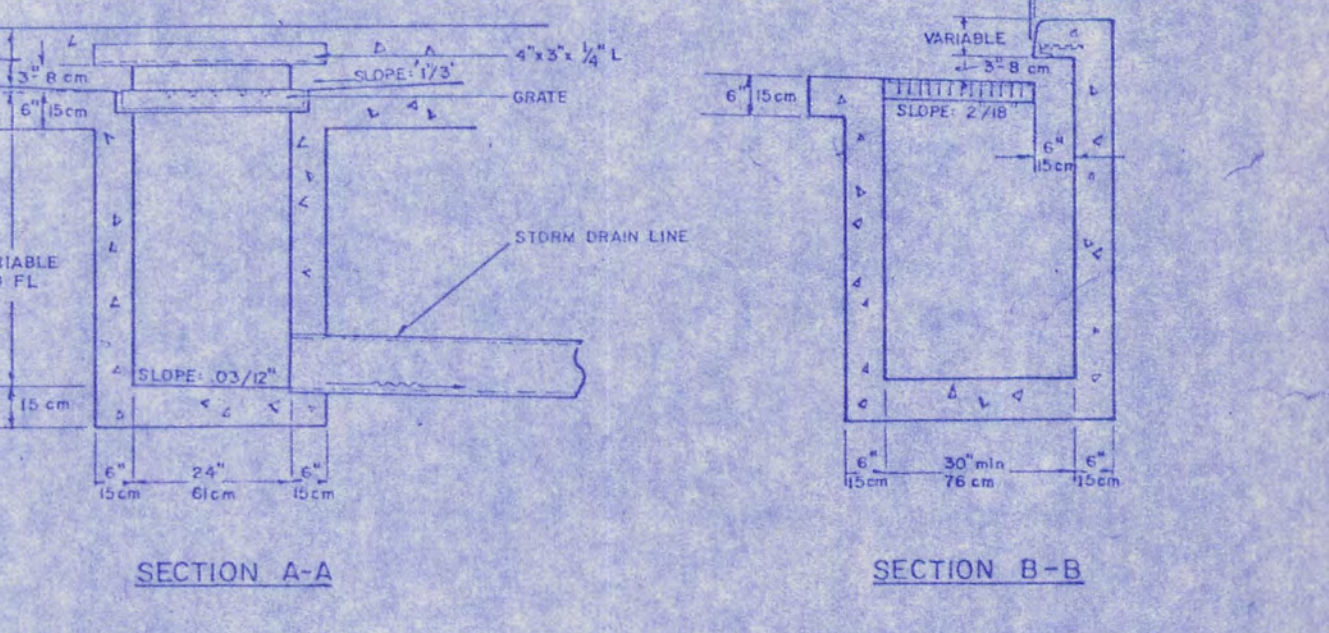
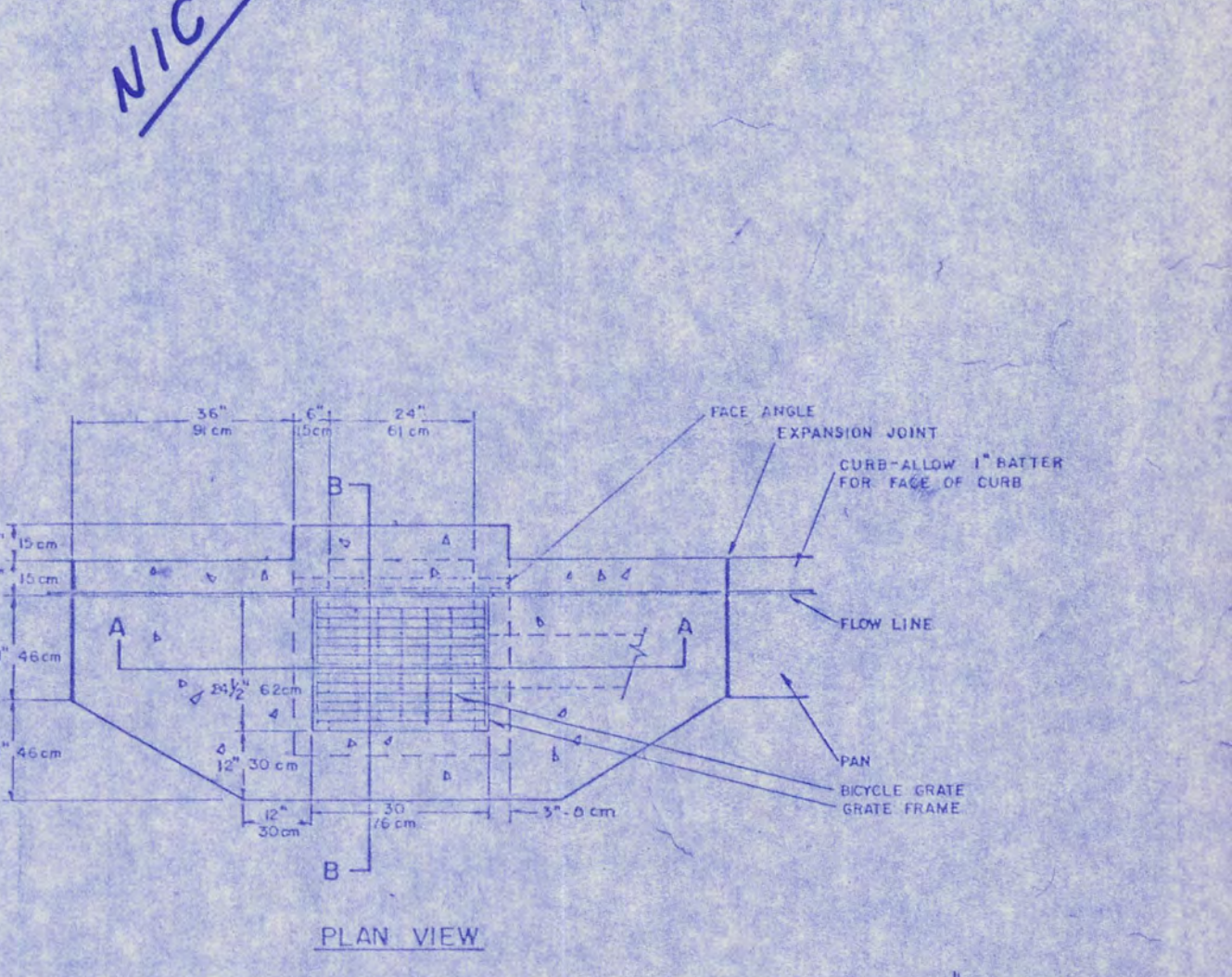
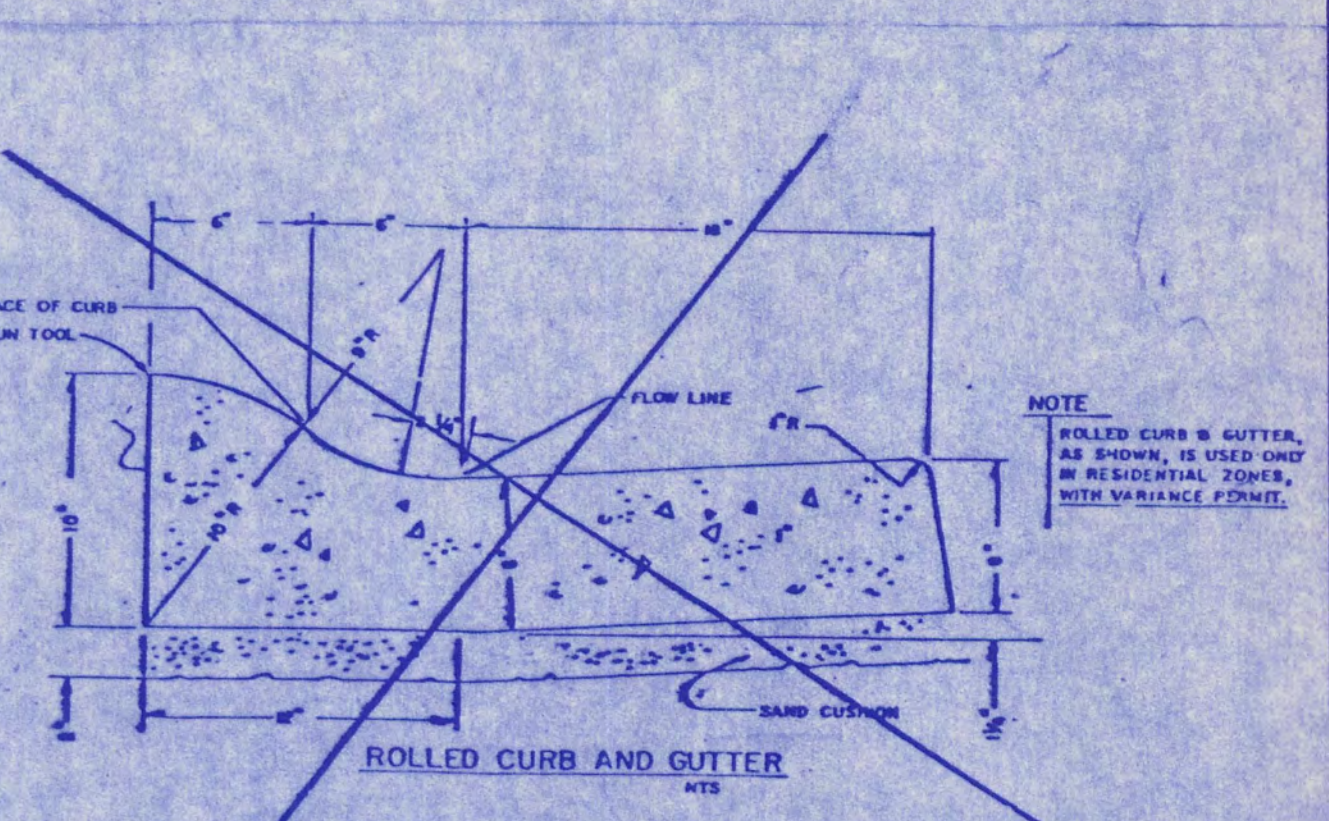
STATE TYPE '60' DROP INLET 55-02



SCORING AND FINISHING SPECS INDUSTRIAL STREET 5T-06

NOTES

- SUBGRADE OF CURB, GUTTER AND SIDEWALK TO BE COMPACTED TO 95% RELATIVE COMPACTION, AND SAND CUSHION TO 90%.
- 4" THICK PCC SIDEWALK REQUIRED.
- 1/2" EXPANSION JOINT AT 20' O.C. TRANSVERSE, O.C. WITH C & B E.A.
- 1/4" DEEP SCORING AT 20' O.C. TRANSVERSE.
- LONGITUDINAL SCORING REQUIRED WHERE SIDEWALK WIDTH IS GREATER THAN 6'0".
- ALL EXISTING P.C.C. SIDEWALK TO BE REMOVED SHALL BE SAWCUT.



SANITARY SEWER CLEAN OUT 55-06

STATE TYPE '60' DROP INLET 55-02