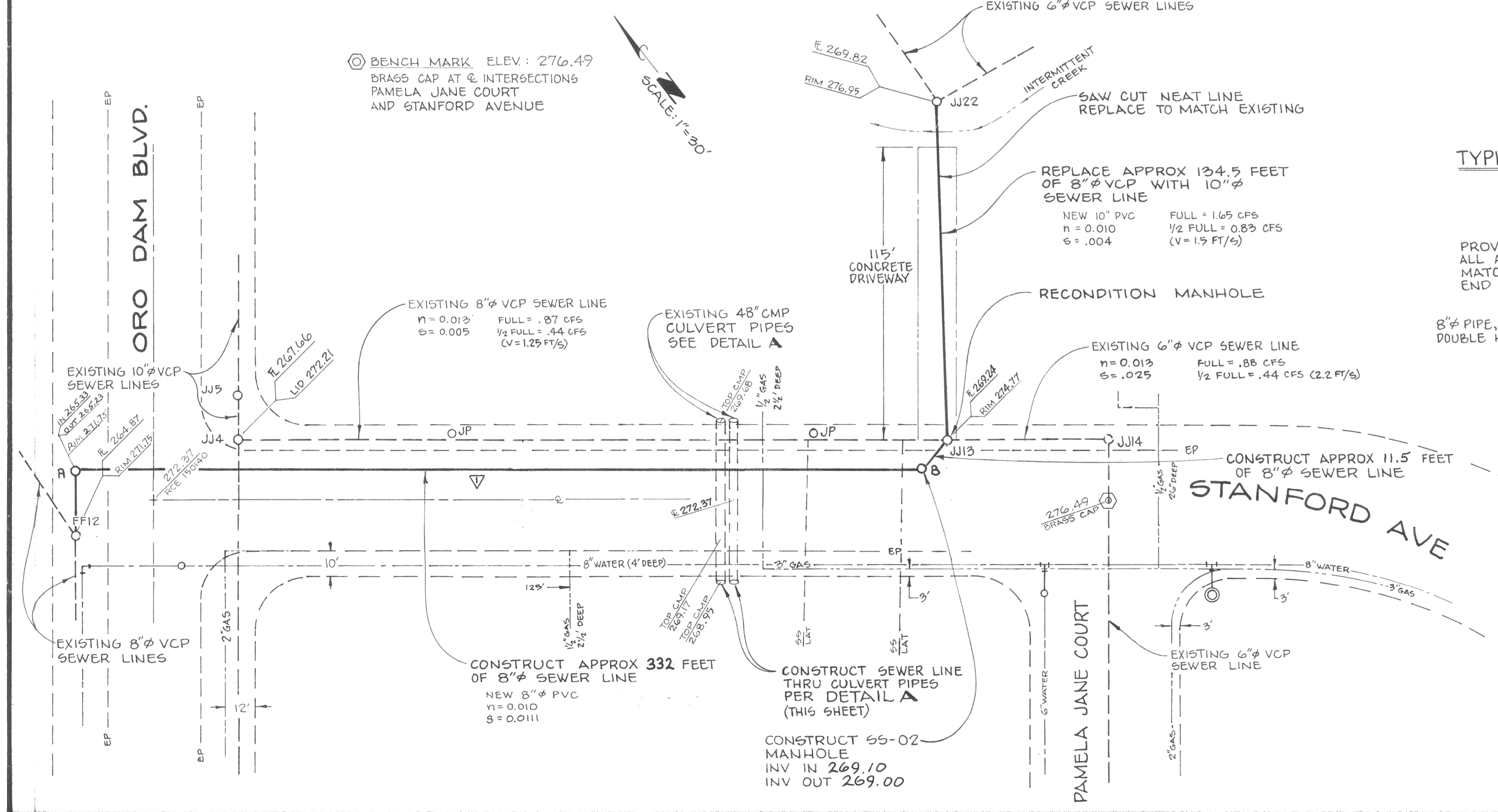
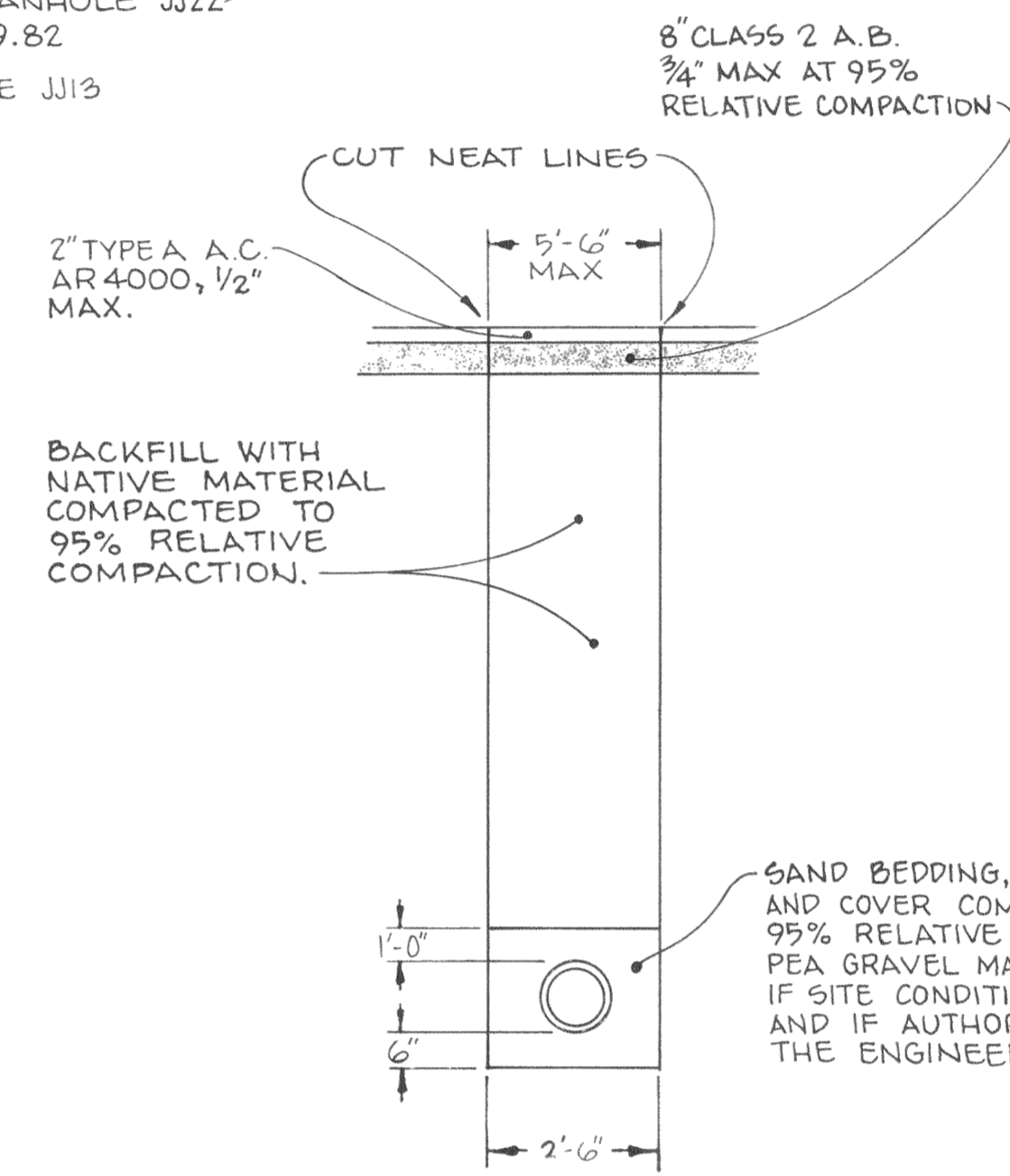
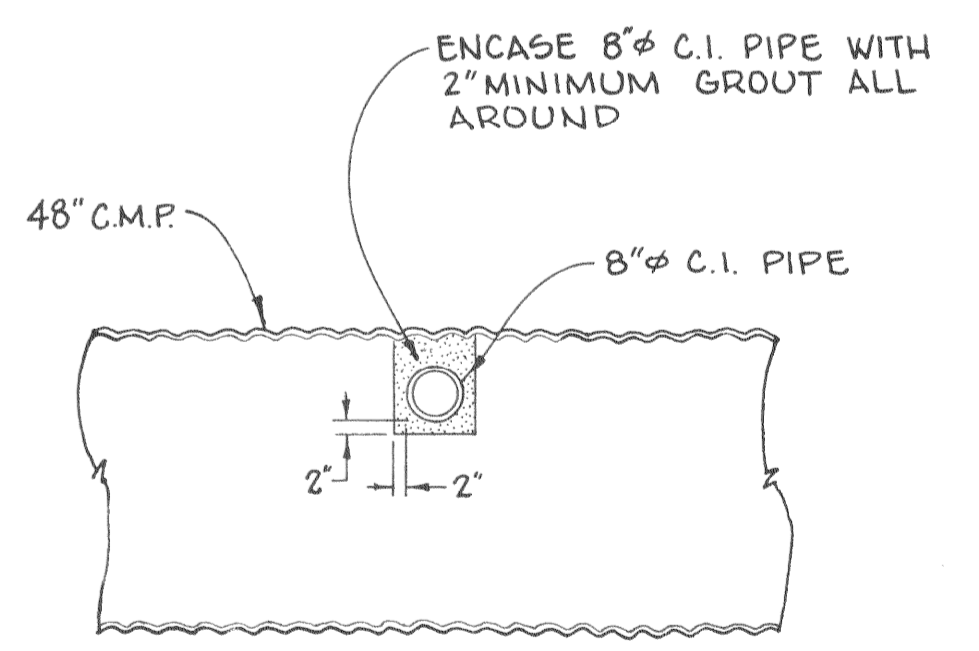
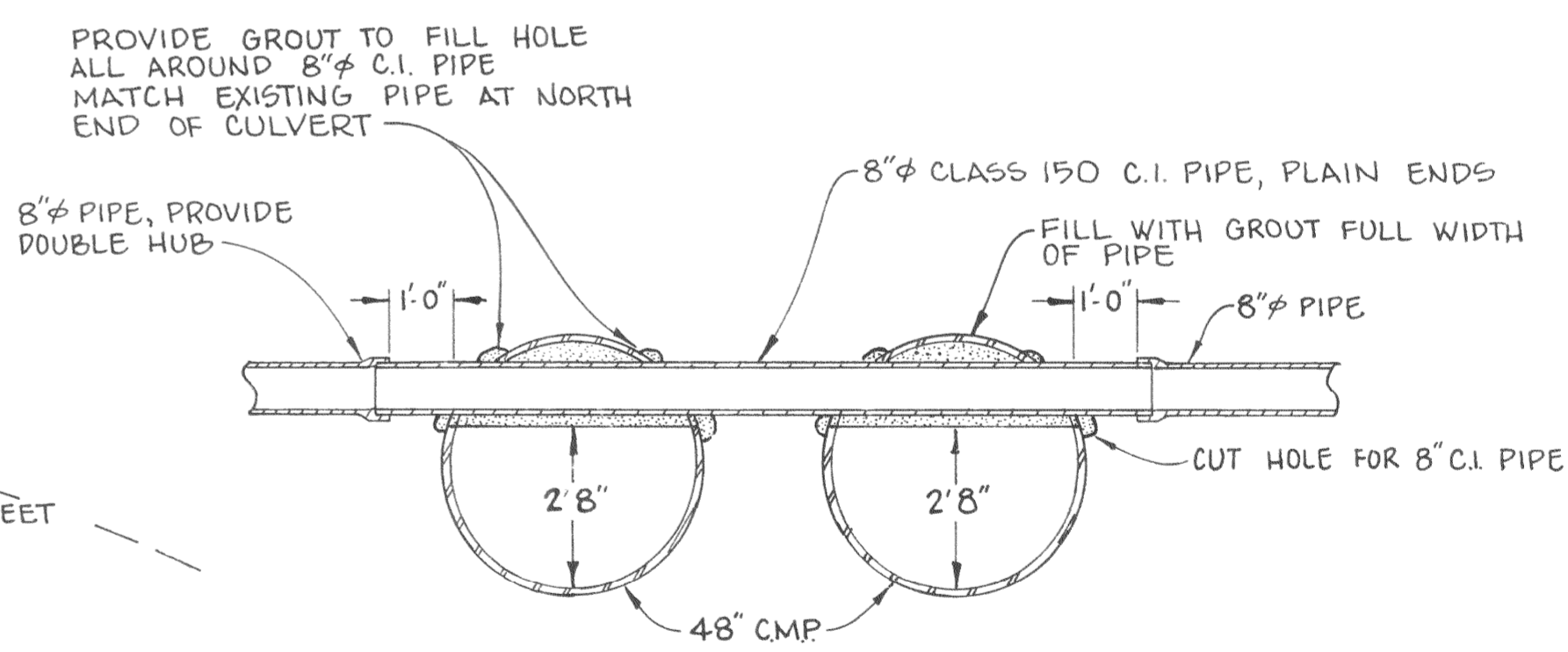


GENERAL NOTES

1. THE LOCATION OF EXISTING UTILITIES AS SHOWN IS FROM INFORMATION PROVIDED BY THE VARIOUS UTILITY COMPANIES. THE EXISTENCE AND LOCATION OF ALL UTILITIES SHALL BE VERIFIED BY THE CONTRACTOR.
2. PRIOR TO ANY CONSTRUCTION, CONTACT UNDERGROUND SERVICE ALERT AT 800-642-2444 FOR INFORMATION ABOUT UNDERGROUND UTILITIES IN THE CONSTRUCTION AREA.
3. THE CONTRACTOR IS CAUTIONED THAT A PERMIT FROM THE DIVISION OF INDUSTRIAL SAFETY IS REQUIRED PRIOR TO COMMENCING EXCAVATION OF A TRENCH GREATER THAN 5 FEET IN DEPTH.
4. THESE PLANS ARE TO BE USED IN CONJUNCTION WITH THE STATE STANDARD SPECIFICATIONS, JULY 1984 EDITION.
5. THE CONTRACTOR SHALL TAKE NECESSARY PRECAUTIONS TO PRESERVE OR REPLACE CENTERLINE MONUMENTS AT ALL INTERSECTIONS.



TYPICAL TRENCH SECTION



		CITY OF OROVILLE	
		SANITARY SEWER REPLACEMENT STANFORD AVENUE & DETAILS	
APPROVED BY <i>W. J. [Signature]</i> PUBLIC WORKS DIRECTOR	DESIGNED BY <i>J. Mike [Signature]</i>	DRAWN BY <i>B. J. [Signature]</i>	DRAWING NO. 55-308
REVISION 6/86 [Signature]	CHECKED BY <i>[Signature]</i>	DATE 1/3/89	SHEET 1 OF 2