

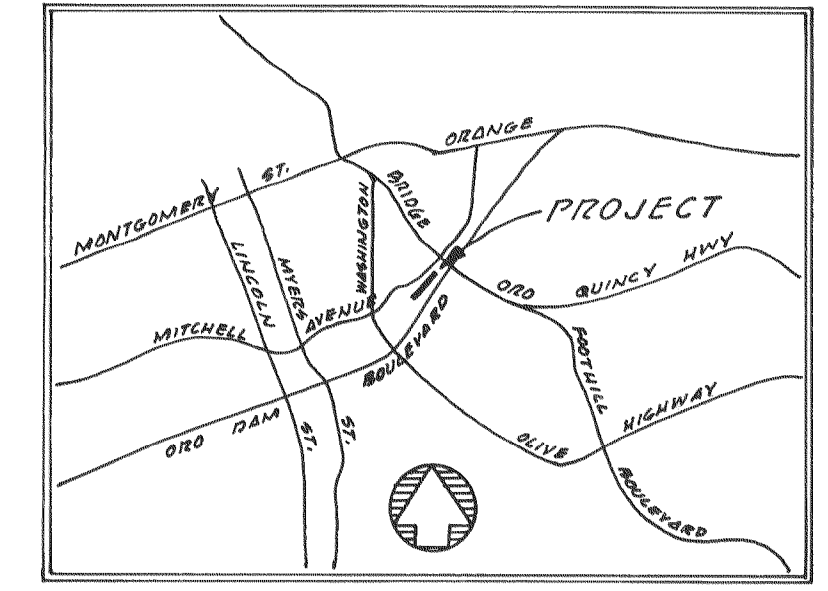
**BRIDGE STREET**

**MITCHELL AVENUE**

**CRC DAM BOULEVARD**

**4" SANITARY SEWER SCHEDULE**

- 1 STA. 4+50 RIGHT
- 2 STA. 4+95 LEFT
- 3 STA. 5+30 LEFT
- 4 STA. 5+95 RIGHT
- 5 STA. 5+95 LEFT
- 6 STA. 6+25 RIGHT
- 7 STA. 6+20 LEFT
- 8 STA. 7+50 RIGHT
- 9 STA. 7+55 RIGHT
- 10 STA. 8+65 LEFT

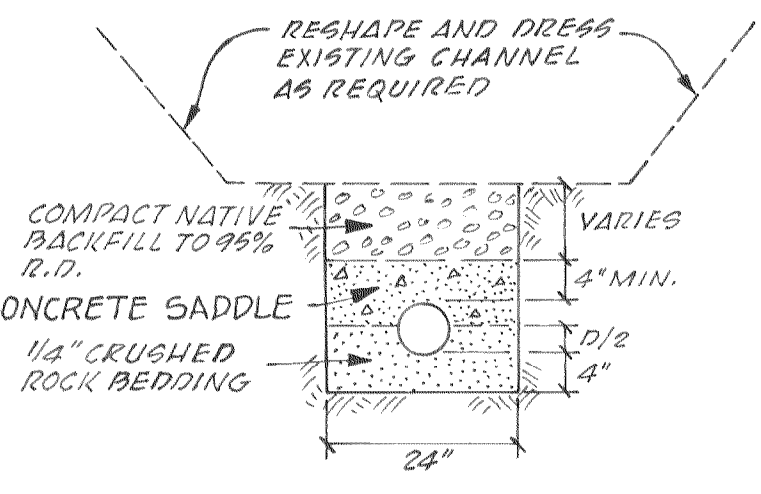


LOCATION MAP  
NOT TO SCALE

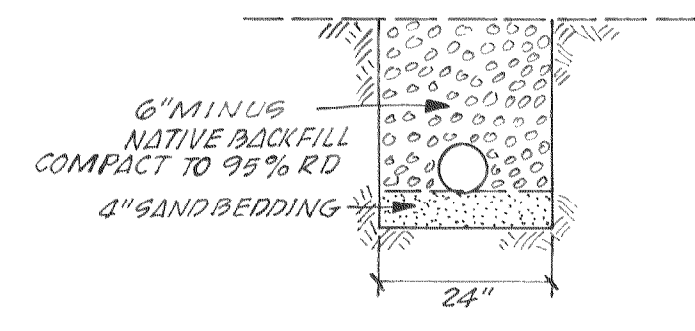
**GENERAL NOTES:**

- 1 - THE EXISTENCE AND LOCATION OF ALL UTILITIES SHALL BE VERIFIED BY THE CONTRACTOR.
- 2 - CONTRACTOR TO VERIFY HOUSE SERVICE LOCATIONS AT TIME OF CONSTRUCTION.
- 3 - EXTEND 4" SEWER SERVICES TO SEWER EASEMENT LINE, AND PLUG.
- 4 - ALL CONSTRUCTION SHALL BE IN STRICT CONFORMANCE WITH THE CITY OF OROVILLE STANDARD AND SPECIFICATIONS.
- 5 - PRIOR TO BEGINNING OF CONSTRUCTION CALL 800-642-2444 FOR LOCATION OF EXISTING UTILITIES.
- 6 - ALL SANITARY SEWER PIPE TO BE 6" VCP, OR 4" VCP AS SHOWN.
- 7 - ALL EASEMENTS TO BE OBTAINED PRIOR TO CONSTRUCTION.

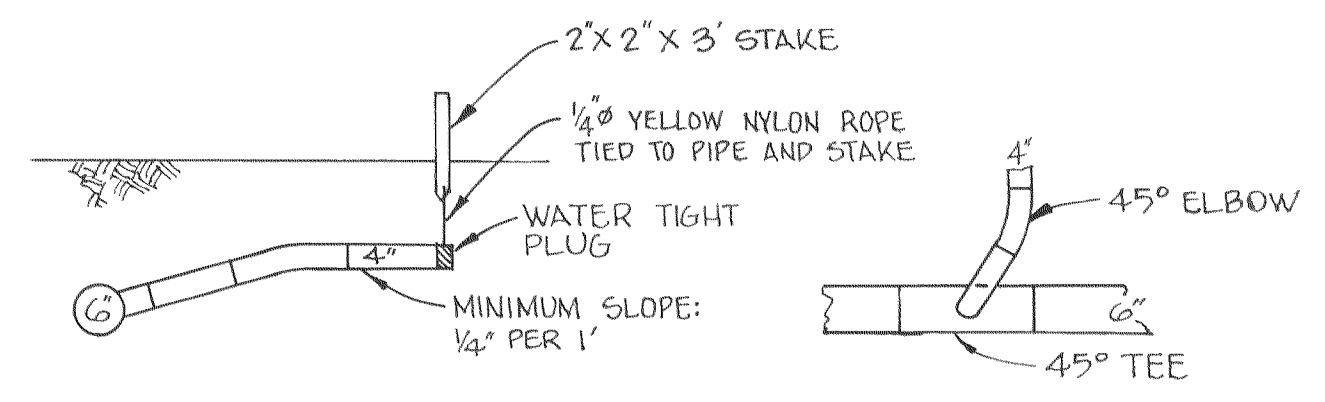
REF: SS-228



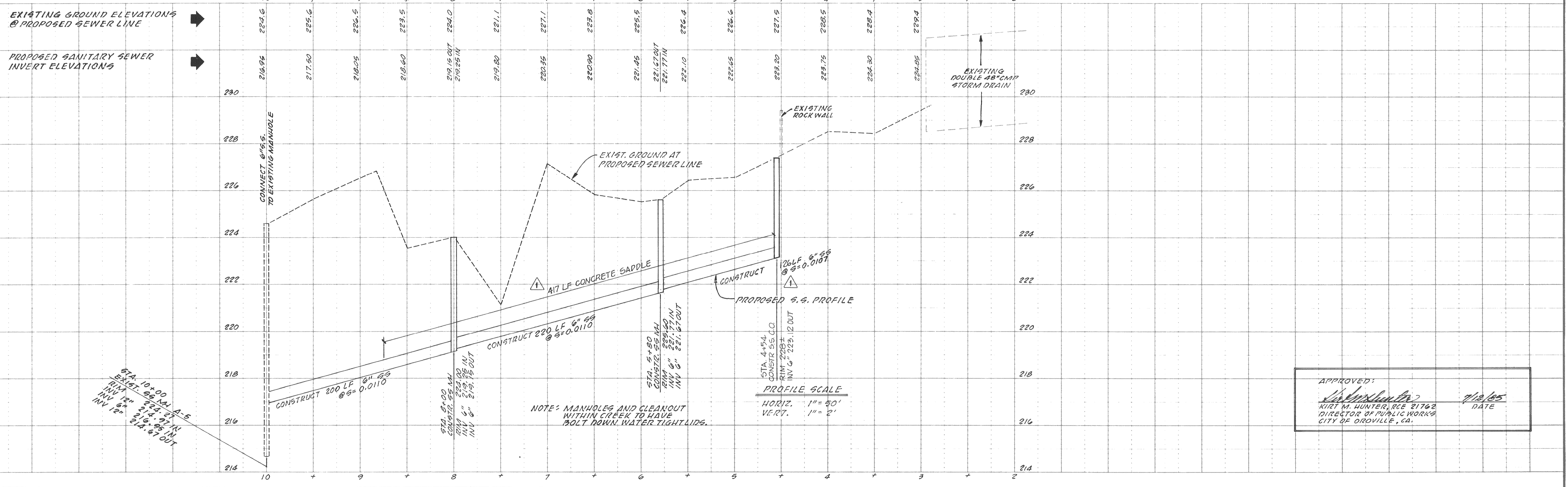
\* CONCRETE SADDLE TYPICAL



TRENCH TYPICAL



4" SANITARY SEWER SERVICE LATERALS TYPICAL



APPROVED:  
*Kurt M. Hunter*  
KURT M. HUNTER, RCE 21762  
DIRECTOR OF PUBLIC WORKS  
CITY OF OROVILLE, CA. DATE: 7/13/05

<p>DATE: 7/16/05</p> <p>REVISION: 1</p> <p>BY: [Signature]</p> <p>APP'D: [Signature]</p>	<p>FIELD BOOK</p> <p>ELEVATION DATUM: T.B.M. SOUTH CORNER OF HEADWALL 7' LT. OF STA. 2+90 ELEV. 237.34</p>	<p>DRAWN: LANE</p> <p>DESIGNED: A.G.B.</p> <p>CHECKED: A.G.B.</p> <p>SCALE: AS SHOWN</p>	<p>PROF. SEAL: [Seal]</p> <p>ALAN G. BROWN, RCE 24578</p>	<p><b>Barnhart-Brown &amp; Associates</b></p> <p>CIVIL ENGINEERS • LAND SURVEYORS</p> <p>Oroville, CA 95965</p>	<p><b>MITCHELL AVE. SEWER LINE EXTENSION</b></p>	<p>SHEET 1 OF 1</p> <p>JOB NO: 84192</p>
--	--	--	---	---	--	--