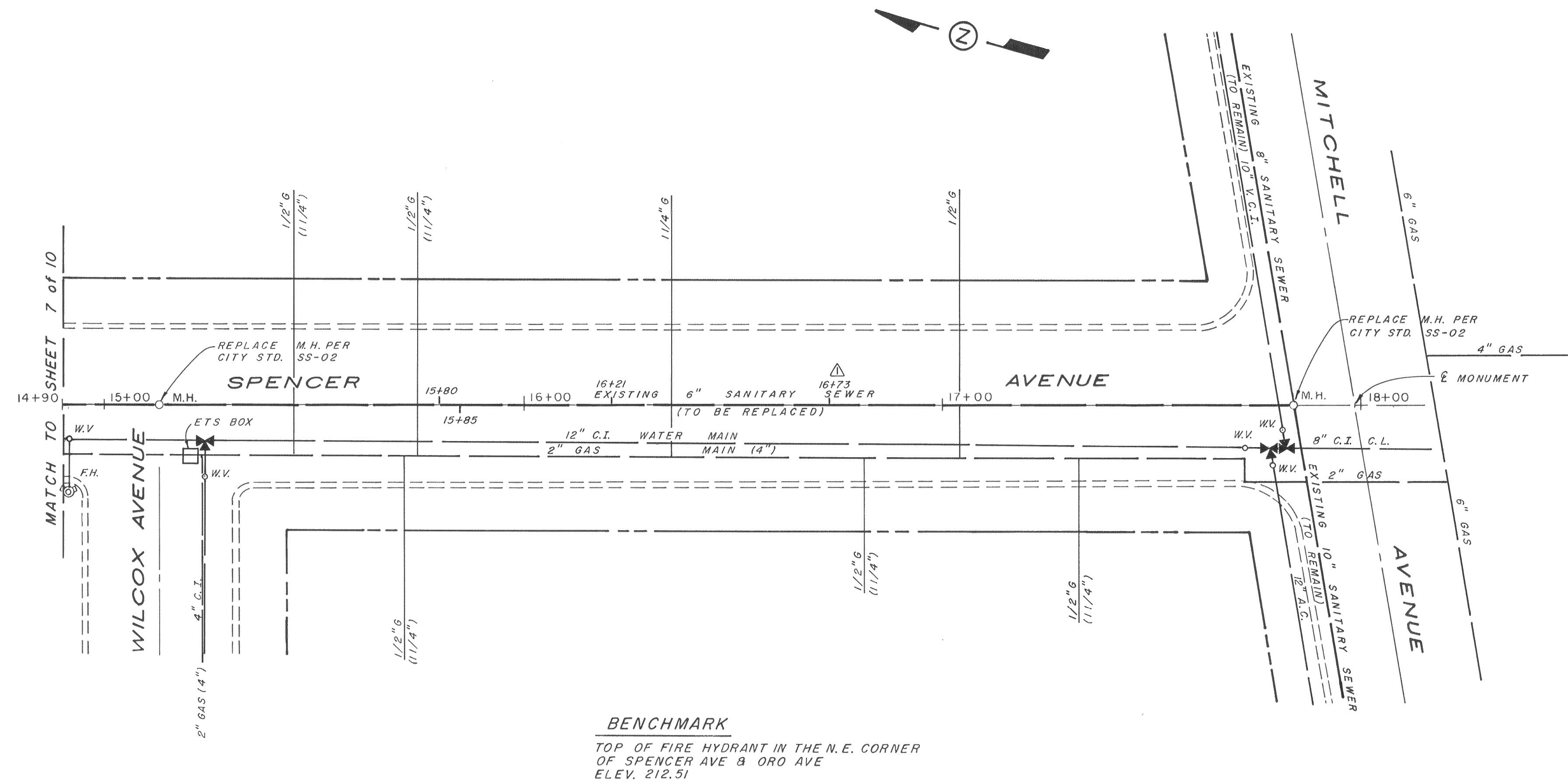


DATE: _____ BY: _____
 PLAN
 CHECKED: _____
 NOTE BOOK: _____
 No. _____



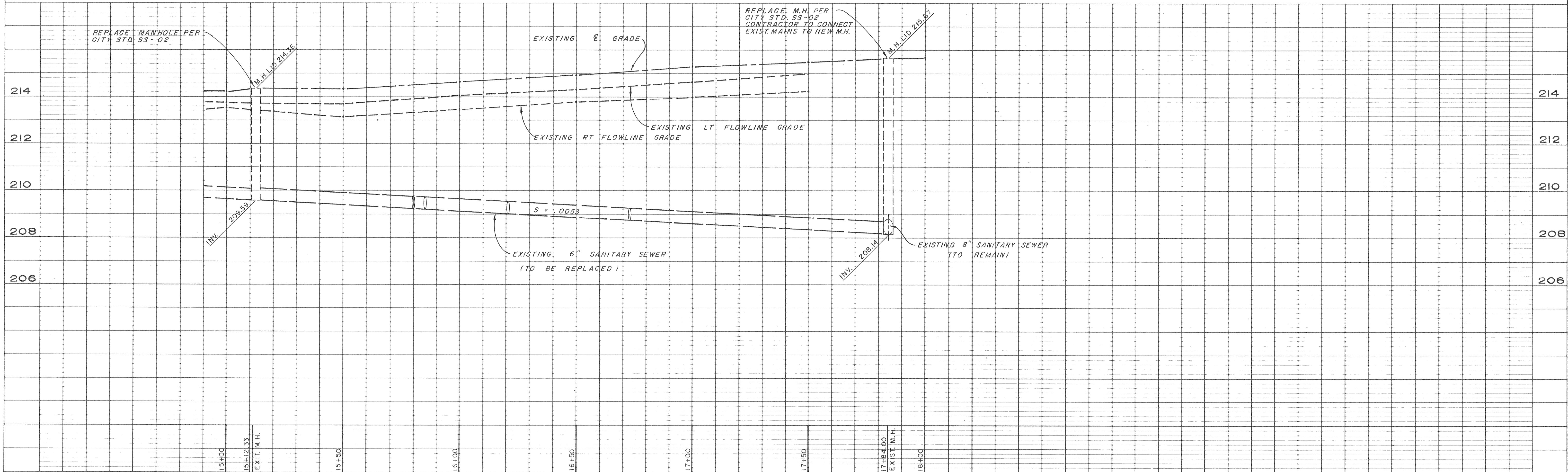
BENCHMARK
 TOP OF FIRE HYDRANT IN THE N.E. CORNER
 OF SPENCER AVE & ORO AVE
 ELEV. 212.51

ENGINEER'S ESTIMATE OF QUANTITIES

SS-02 MANHOLE	2 EA
6" SANITARY SEWER MAIN	294 L.F.
SS-01 SERVICE CONNECTIONS	7 EA
PAVEMENT REPLACEMENT	1920 S.F.

SCALE
 HORIZ. 1" = 20'
 VERT. 1" = 2'

DATE: _____ BY: _____
 PROFILE
 CHECKED: _____
 NOTE BOOK: _____
 No. _____



DATE NO.	REVISION	BY	APP'D
5-15-92	1	T.F.	J.J.

FIELD BOOK	DRAWN	APPROVED
ELEVATION DATUM	T.F.	J.J.
	DESIGNED	J.J.
	CHECKED	J.J.
	SCALE	

[Signature]
 DIRECTOR PUBLIC WORKS R.C.E. 41977
 DATE 1/22/91

CITY OF OROVILLE
 PUBLIC WORKS DEPARTMENT
 1675 MONTGOMERY ST.
 OROVILLE, CA 95965 (916) 538-2420

SANITARY SEWER REPLACEMENT PROJECT
 SPENCER AVENUE

AS-BUILT
 SHEET 8 OF 10
 SHEETS
 JOB NO. SS-337