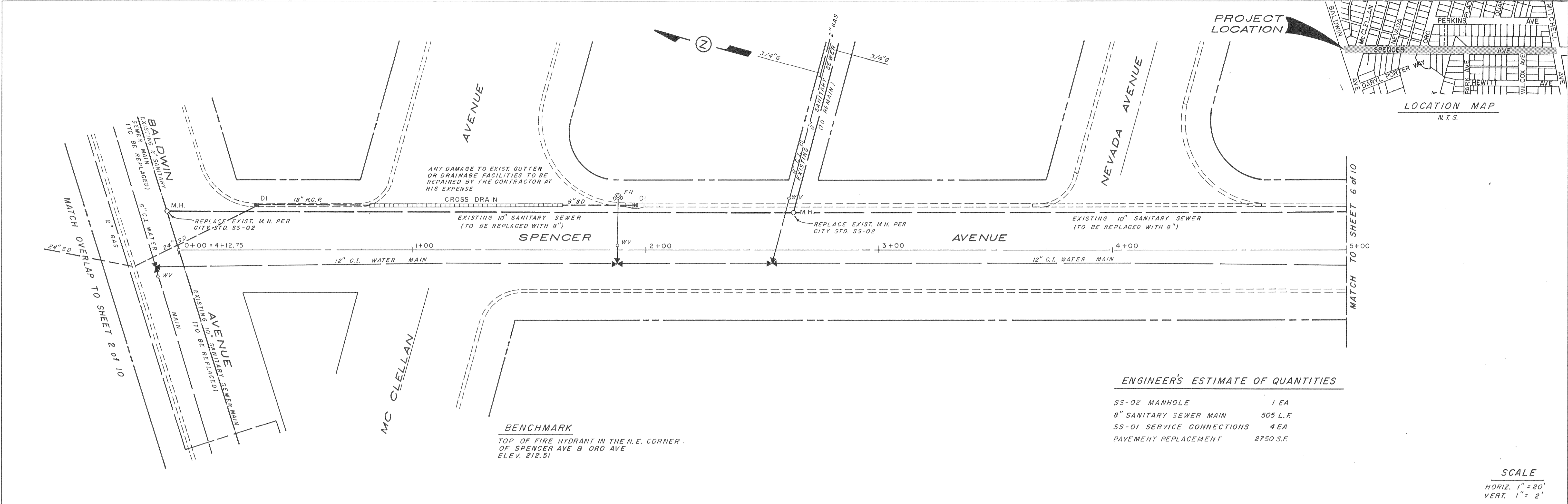


PLAN	DATE
BY	
REVISIONS	
NOTED	
NOTED	
NOTE BOOK	
NO. OF WAY CHECKED	
NO.	

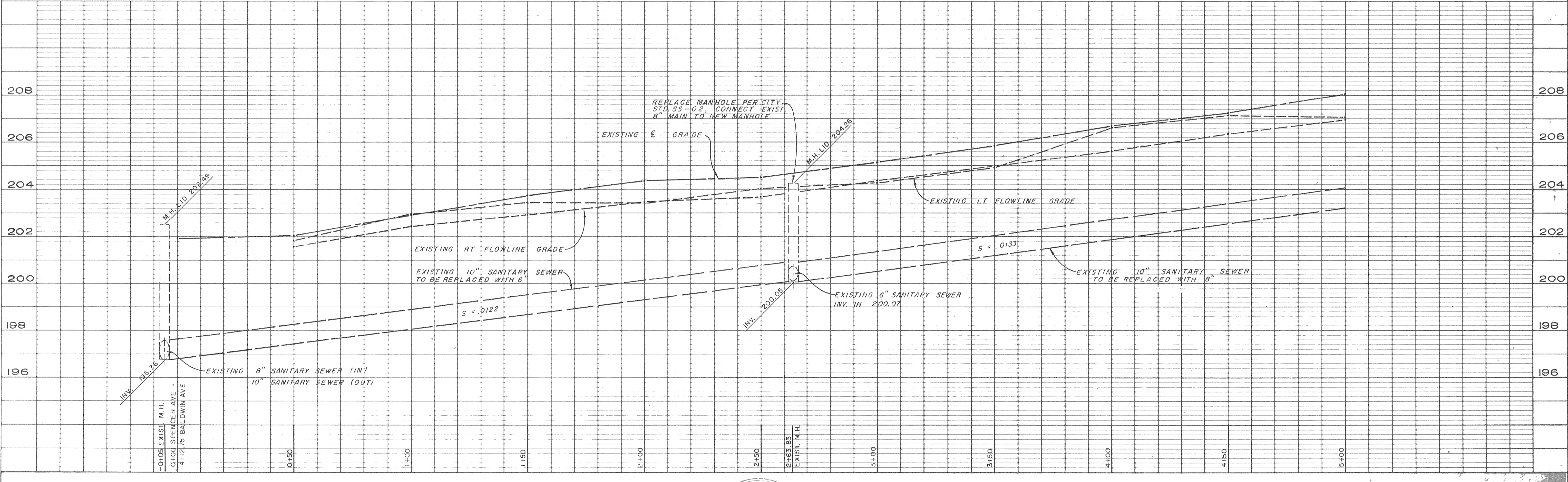


ENGINEER'S ESTIMATE OF QUANTITIES

SS-02 MANHOLE	1 EA
8" SANITARY SEWER MAIN	505 L.F.
SS-01 SERVICE CONNECTIONS	4 EA
PAVEMENT REPLACEMENT	2750 S.F.

SCALE
 HORIZ. 1" = 20'
 VERT. 1" = 2'

PROFILE	DATE
BY	
REVISIONS	
NOTED	
NOTED	
NOTE BOOK	
NO. OF WAY CHECKED	
NO.	



FIELD BOOK	DATE		
ELEVATION DATUM			
DATE NO.	REVISION	BY	APP'D

DRAWN	T.F.
DESIGNED	J.J.
CHECKED	J.J.
SCALE	

APPROVED

 DIRECTOR PUBLIC WORKS DEPT. (1977) DATE

CITY OF OROVILLE
 PUBLIC WORKS DEPARTMENT
 1675 MONTGOMERY ST.
 OROVILLE, CA 95965 (916) 538-2420

SANITARY SEWER REPLACEMENT PROJECT
 SPENCER AVENUE