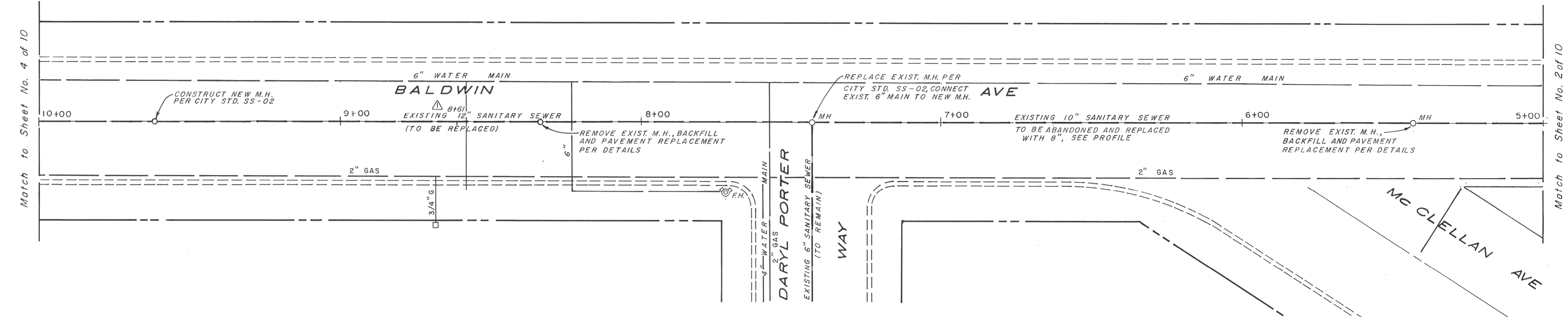


PLAN
 SURVEYED BY DATE
 NOTE BOOK GRADES CHECKED
 ALIGNMENT CHECKED BY
 ST. OF WAY CHECKED BY

PROFILE
 SURVEYED BY DATE
 NOTE BOOK GRADES CHECKED
 B.M. NOTED BY
 STRUCTURE LOCATIONS CHECKED BY

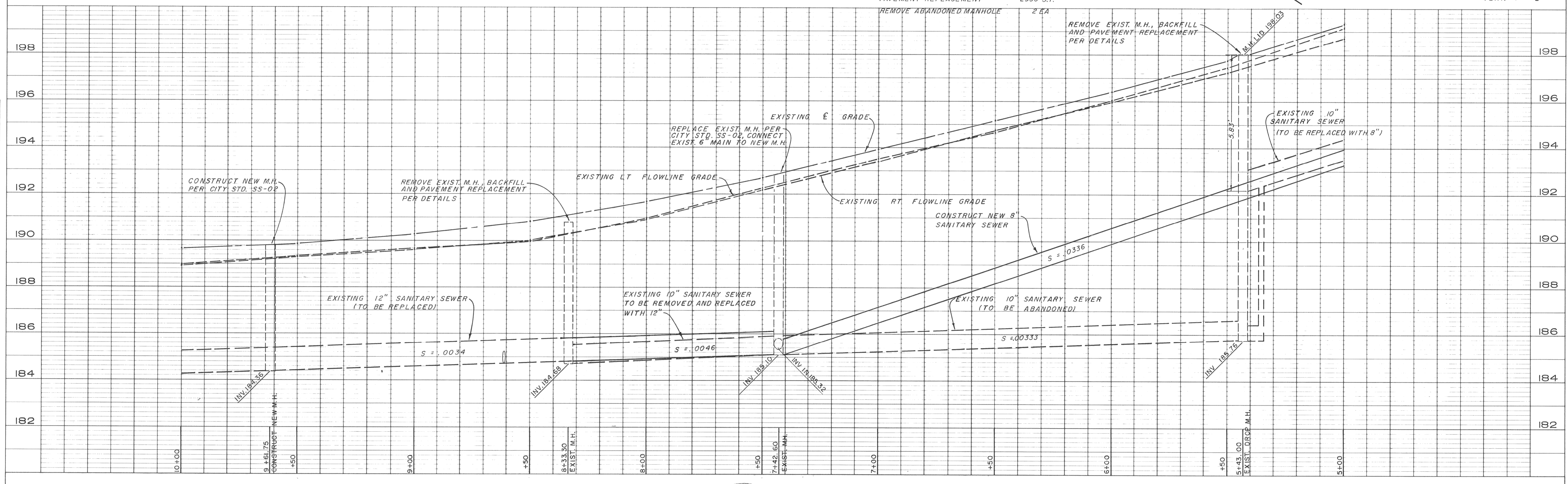


BENCHMARK
 TOP OF FIRE HYDRANT IN THE S.W. CORNER
 OF BALDWIN AVE & DARYL PORTER WAY
 ELEV. 194.82

ENGINEERS ESTIMATE OF QUANTITIES

SS-02 MANHOLE	2 EA
8" SANITARY SEWER MAIN	243 L.F.
12" SANITARY SEWER MAIN	257 L.F.
SS-01 SERVICE CONNECTIONS	3 EA
PAVEMENT REPLACEMENT	2950 S.F.
REMOVE ABANDONED MANHOLE	2 EA

SCALE
 HORIZ. 1" = 20'
 VERT. 1" = 2'



DATE NO.	REVISION	BY APP'D
5-15-92	▲ SANITARY SEWER STUB LOCATION	T.F. J.J.

FIELD BOOK
 ELEVATION DATUM
 DRAWN T.F.
 DESIGNED J.J.
 CHECKED J.J.
 SCALE

APPROVED
 REGISTERED PROFESSIONAL ENGINEER
 JOHN MICHAEL GRUND
 N. O. 0041577
 1/22/91
 DIRECTOR PUBLIC WORKS DEPARTMENT DATE

CITY OF OROVILLE
 PUBLIC WORKS DEPARTMENT
 1675 MONTGOMERY ST.
 OROVILLE, CA 95965 (916) 538-2420

SANITARY SEWER REPLACEMENT PROJECT
 BALDWIN AVENUE

AS-BUILT
 SHEET 3 OF 10 SHEETS
 JOB NO. SS-337