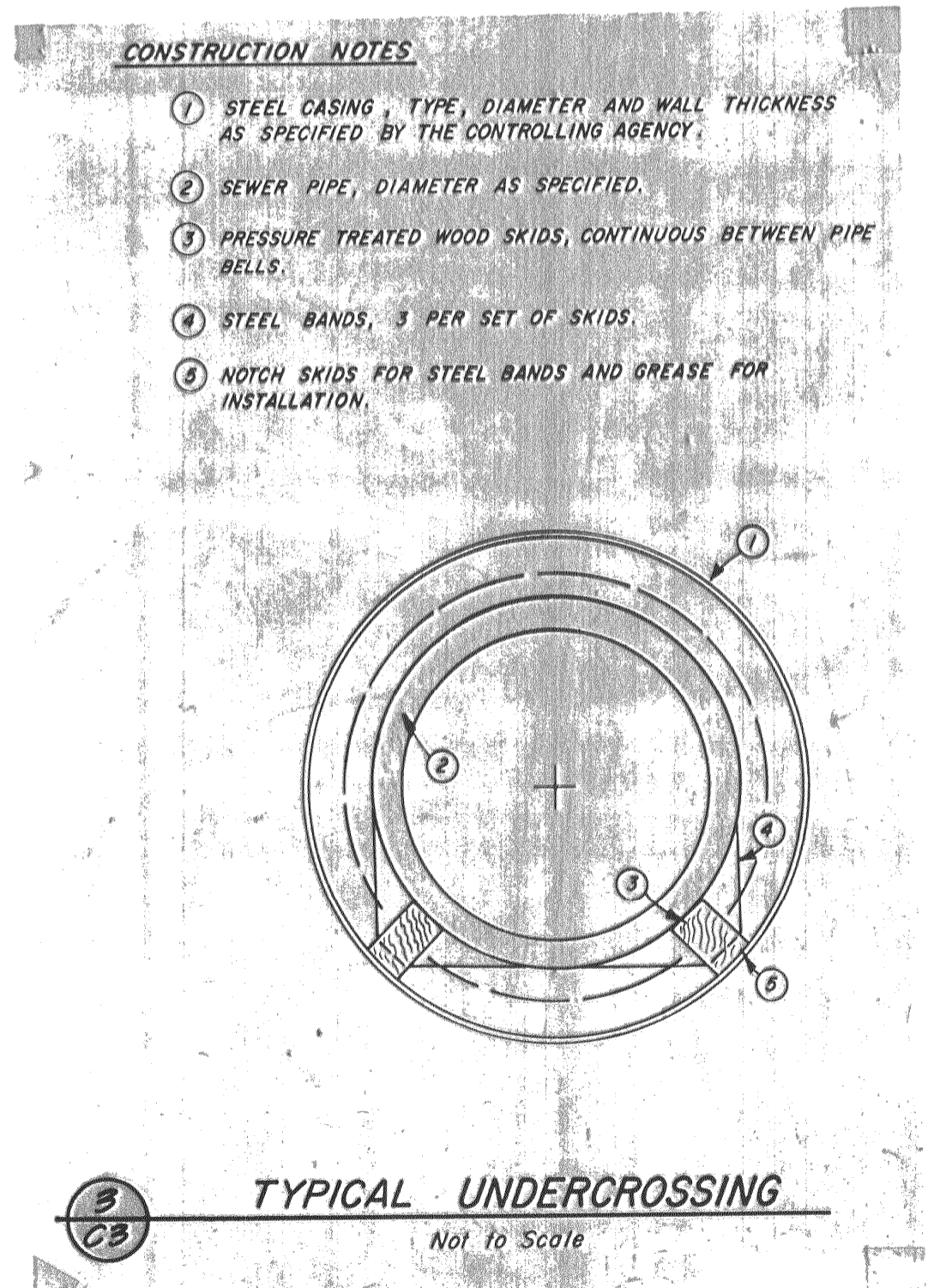
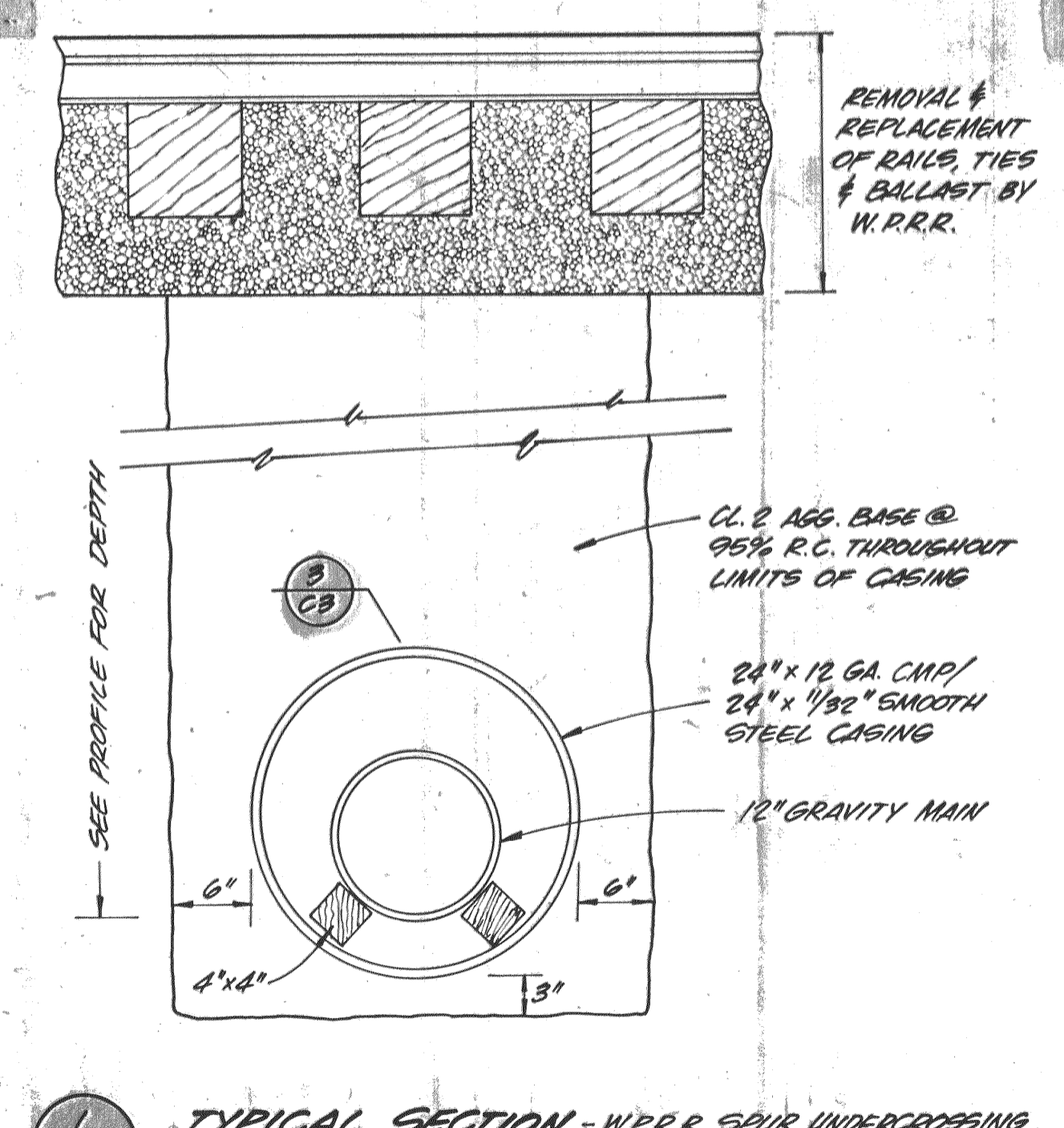


TYPICAL SECTIONS

REQUIREMENTS FOR UNDER-TRACK CROSSINGS

- All conduits, etc., must be in a casing under track.
- 3-foot minimum cover measured from top of rail to top of casing.
- Wall thickness for casing pipe (For E-80 Loading - cover 1-10 ft.) be as follows:

CASING DIAMETER	CORRUGATED METAL CASING	SMOOTH STEEL CASING	CONCRETE
Inches	U.S. Standard Gage No.	Inches	Equivalent
Under 14	14 ga.	3/16	0.188
14 and 16	12 ga.	7/32	0.219
18	12 ga.	1/4	0.250
20	12 ga.	9/32	0.281
22	12 ga.	5/16	0.312
24	12 ga.	11/32	0.344
26	12 ga.	3/8	0.375
28 and 30	12 ga.	13/32	0.406
32	10 ga.	7/16	0.438
34 and 36	10 ga.	15/32	0.469
38 40 & 42	10 ga.	1/2	0.500
60	8 ga.	-	-



- Casing shall extend minimum of 20 feet from centerline of track measured at right angles, subject to review account depth of casing.
 - No open excavation within 20 feet of centerline of track.
 - Installed by jack and dry bore method under track; permissible open trench methods other than track areas.
 - No jacking permitted.
 - No open excavation closer than 20 feet from centerline of track prior to Signal Dept. field meeting with contractor.
 - Suitable barricades, handrails and lights to protect Railroad employees where open excavation is in or near track areas.
 - Where depth of excavation is such that 1:1 slope line from 12-foot shoulder line falls outside of excavated area, contractor shall install suitable side and end shoring. After completion of work, contractor shall properly compact backfill in excavated areas.
 - Contractor to enter into separate agreement with Railroad covering his activities on Railroad right of way, prior to entering on Railroad property.
 - Contractor to furnish certified copies of insurance policies taken out in behalf of Railroad for following coverage:
 - Railroad Protective Public Liability Insurance:
 - Bodily injuries or death to one person - \$1,000,000
 - For 2 or more persons in one accident - \$1,000,000
 - Railroad Protective Property Damage Liability Insurance:
 - For damage resulting from injury or destruction of property - \$2,000,000 aggregate
 - 9 copies of construction plans for review by department heads - LICENSE AGREEMENTS
 - Upon approval by various departments, license issued (\$250.00 preparation fee)
- WHERE EASEMENT REQUIRED:
- 9 copies of construction plans.
 - 2 copies of notes and bounds description; no centerline description.
 - 9 copies of letter-size easement plat and 1 copy duplicate tracing. Duplicate tracing should have vicinity map and title block omitted for superimposition of RR title block.
 - Upon approval by department heads, transmitted to Chief Engineer for checking easement and preparation of Contractor Agreement, etc.
 - Board of Directors passes resolution conveying easement.
 - Possible for Right of Entry in Interim of formal easement preparation.
 - License agreements with Pacific Gas & Electric Company, and The Pacific Telephone and Telegraph Company require no contractor's right of entry or insurance coverage.
- Oct. 1, 1958 Rev. Aug. 1978
Rev. Dec. 1973 Rev. Oct. 1979
Rev. Sept. 1977
- THE WESTERN PACIFIC RAILROAD COMPANY
SACRAMENTO NORTHERN RAILROAD
TIDWATER SOUTHERN RAILWAY COMPANY

W.P.R.R. SPUR TRACK UNDERCROSSING

SURFACE RESTORATION