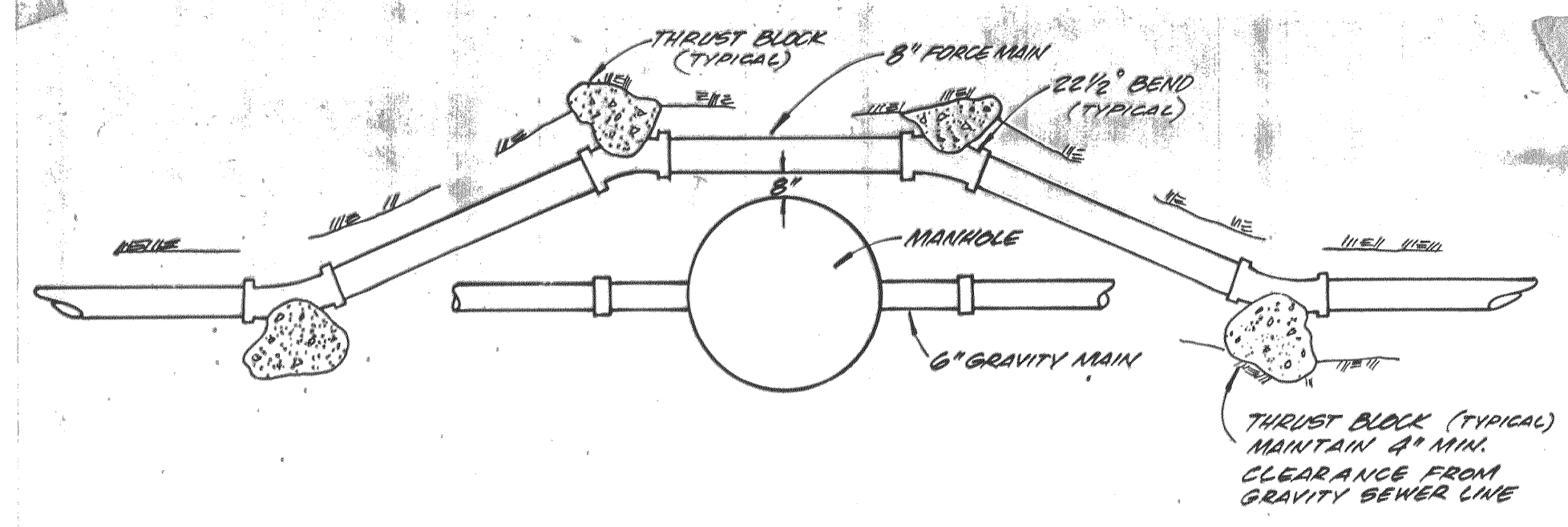
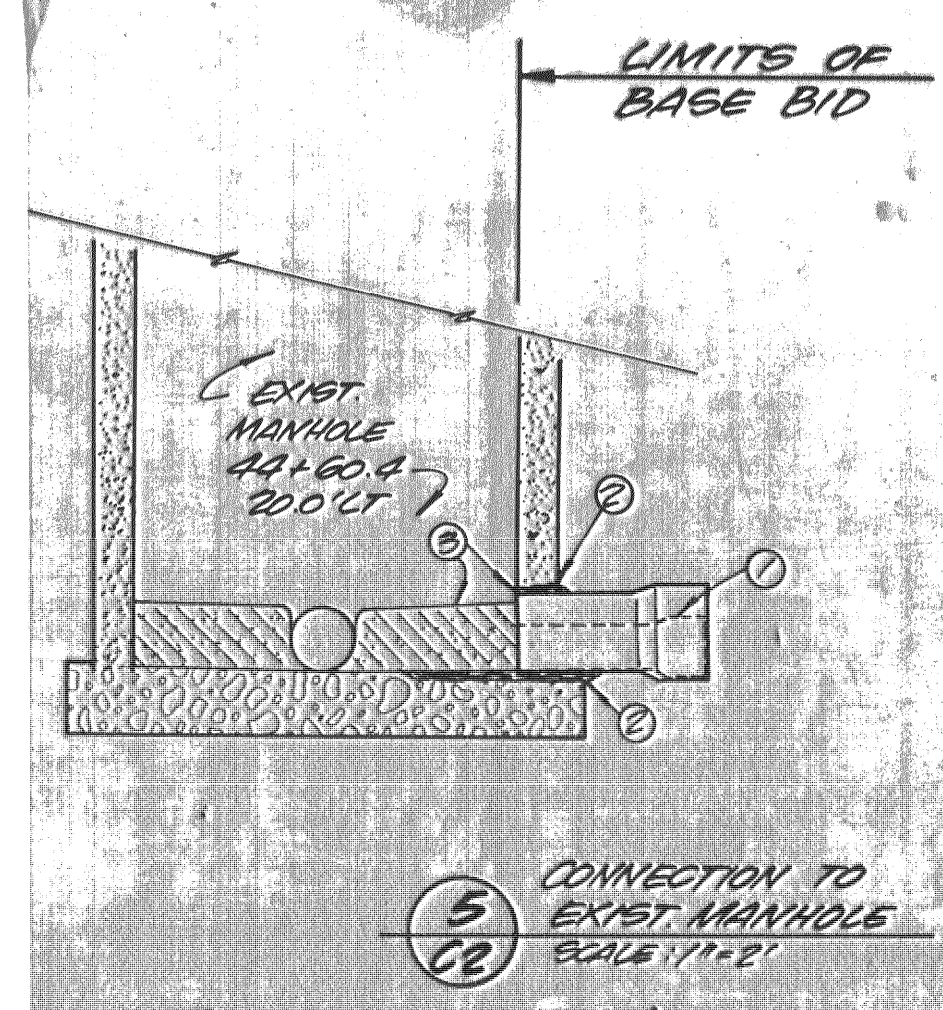


3 FORCE MAIN OUTLET MANHOLE
NOT TO SCALE



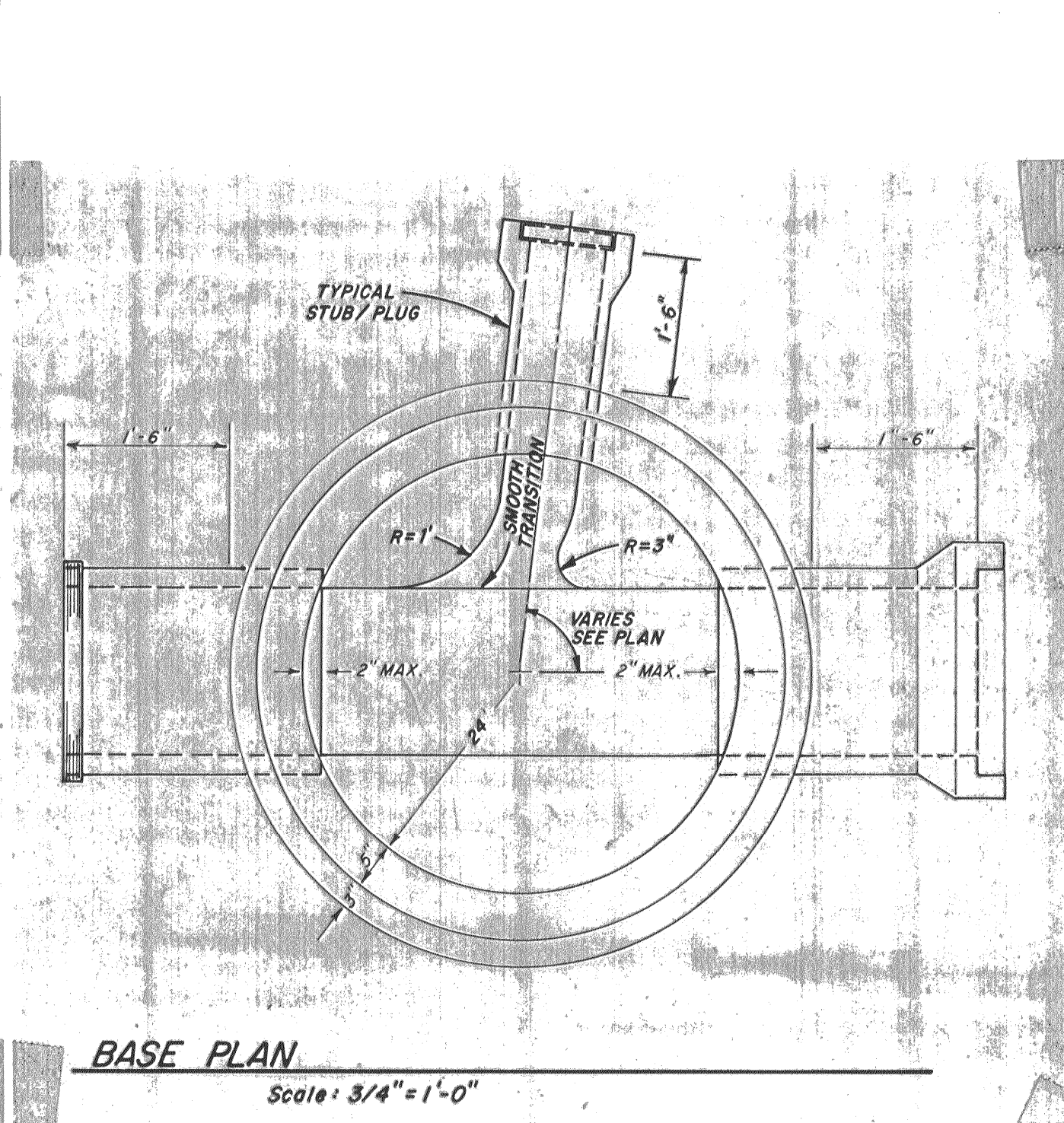
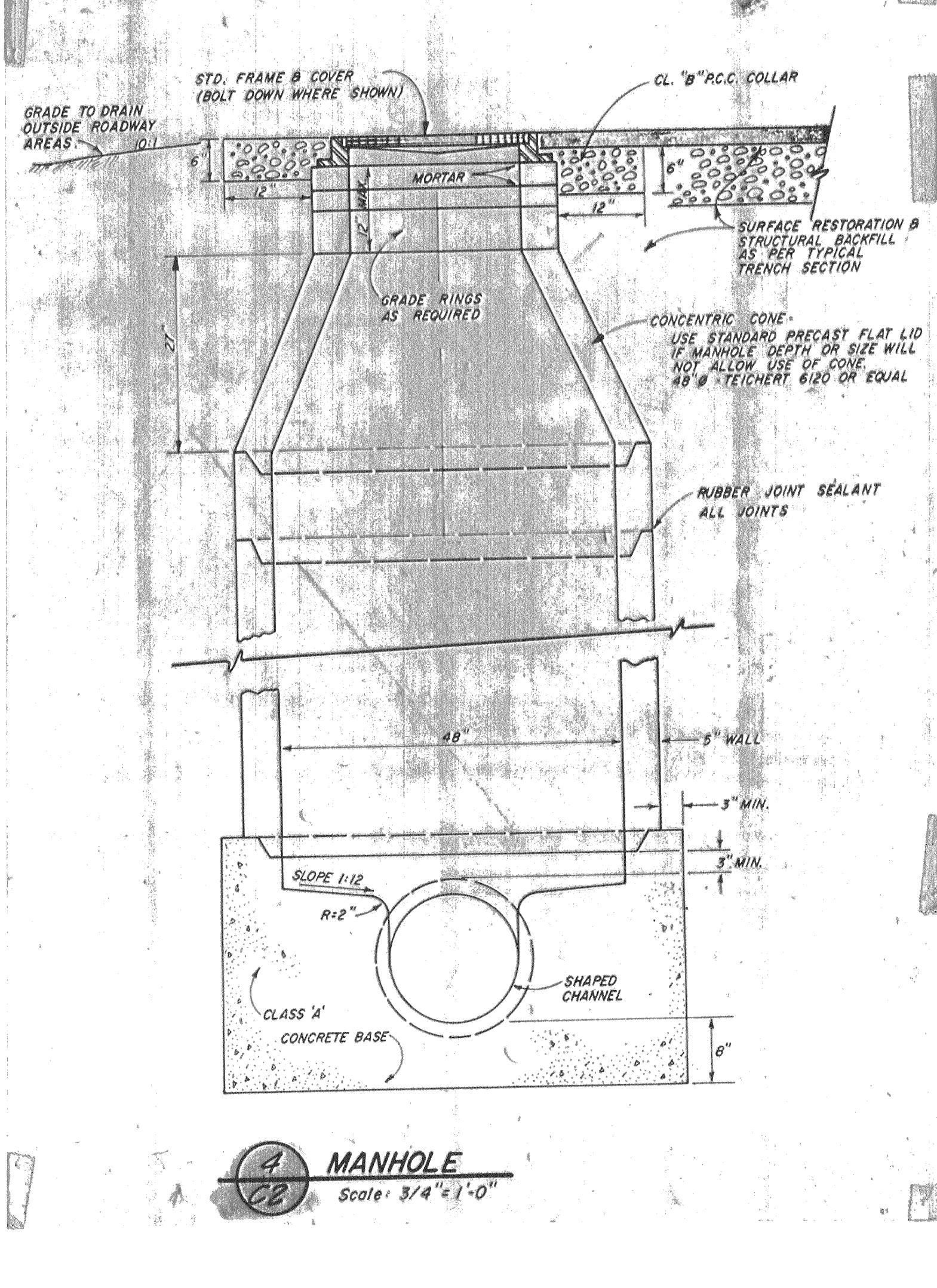
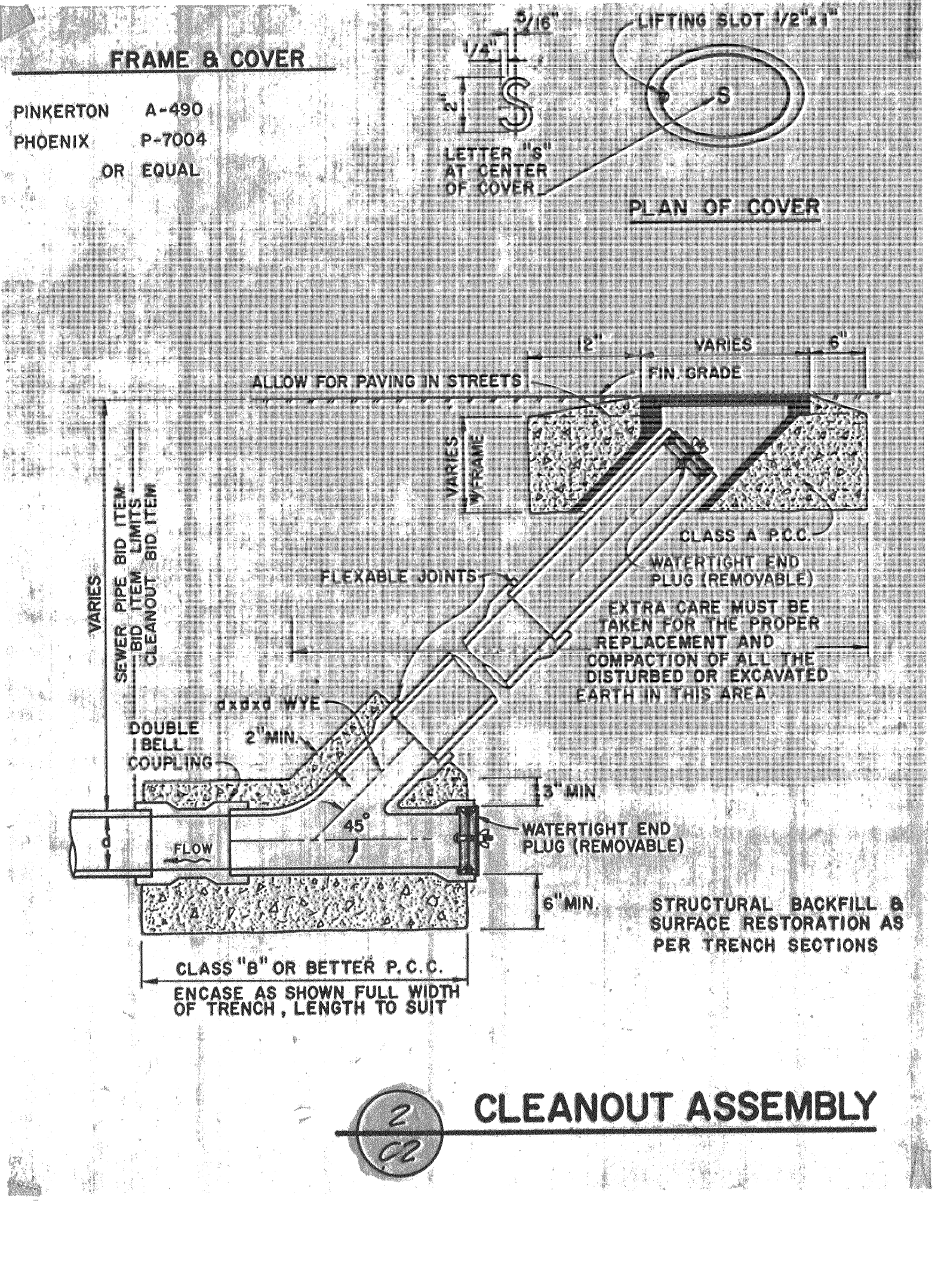
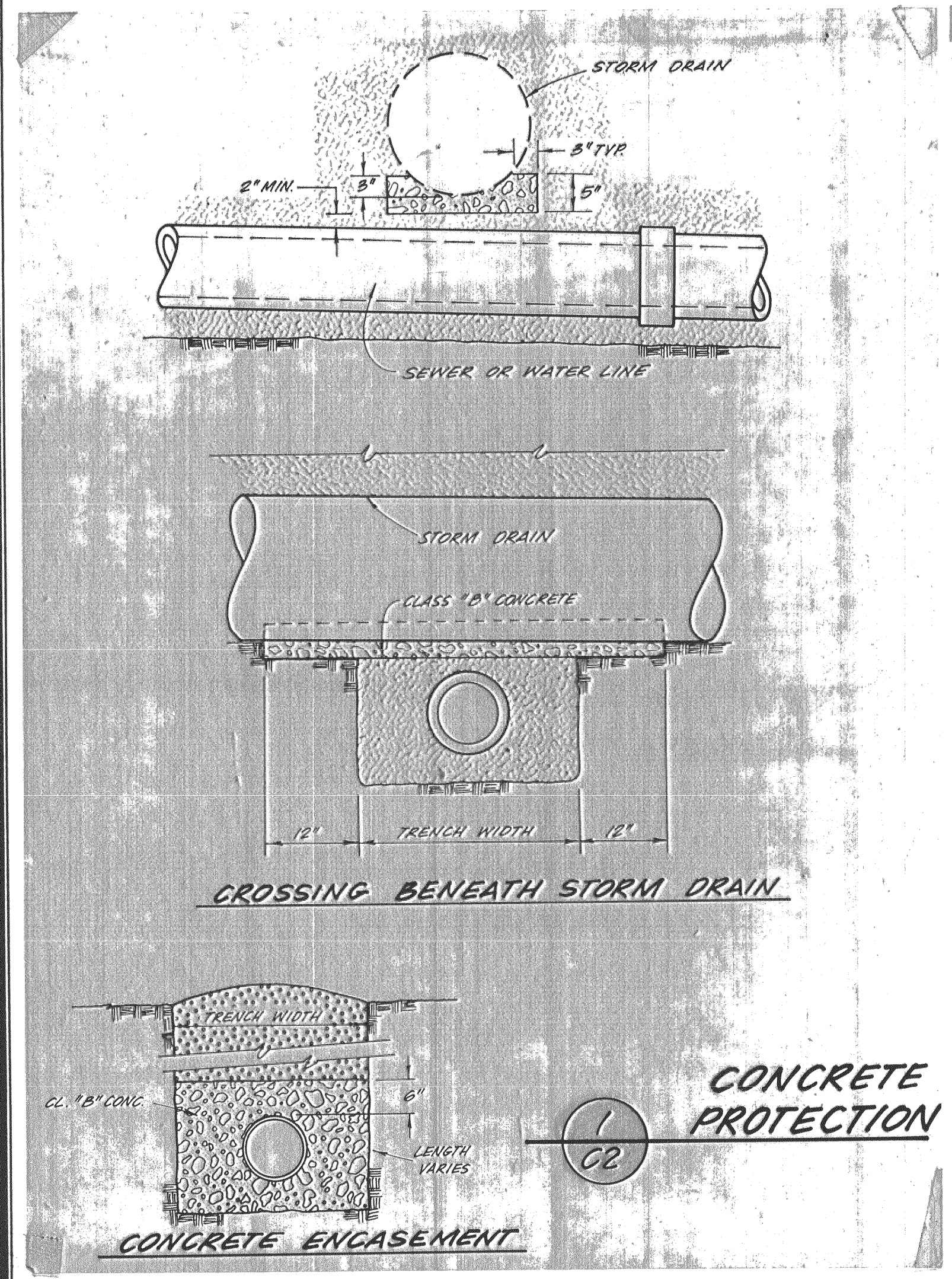
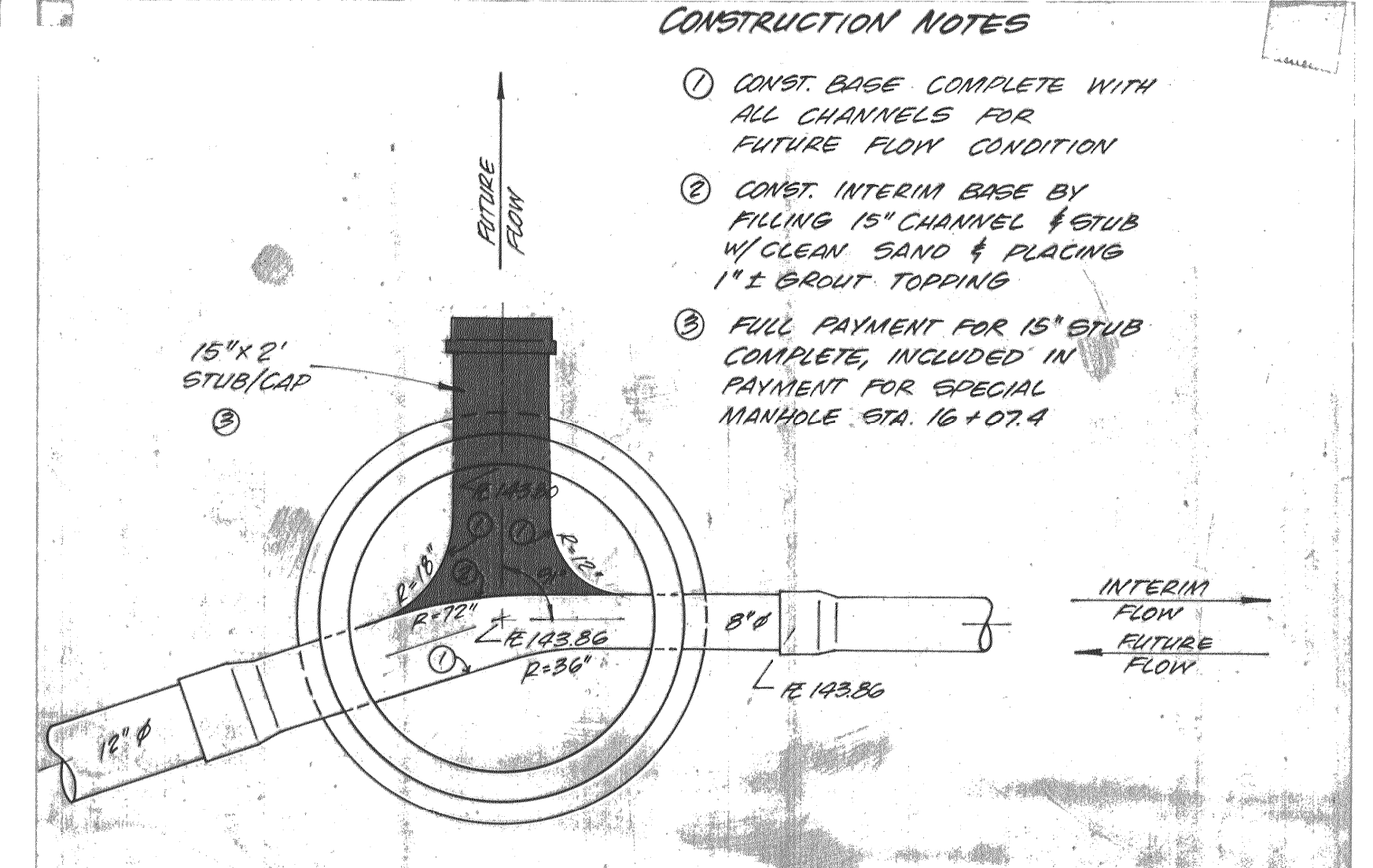
7 FORCE MAIN MANHOLE BYPASS



5 CONNECTION TO EXIST MANHOLE
SCALE: 1" = 2'

CONSTRUCTION NOTES

- REMOVE EXIST 6" x 2' PVC STUB/PLUG
- CHIP OUT EXIST WALL & BASE PROVIDE ADEQUATE CLEARANCE FOR GROUT SEAL
- SET & GROUT IN 8" x 2' PVC STUB GROUT IN & CONST NEW CHANNEL.



COOK ASSOCIATES
ENGINEERING CONSULTANTS
2060 PARK AVENUE, OROVILLE, CALIFORNIA 95965

CITY OF OROVILLE
SANITARY SEWER EXTENSION
INDUSTRIAL UNIT NO. 2
MISCELLANEOUS DETAILS

REGISTERED PROFESSIONAL ENGINEER
DANIEL JAMES COOK
No. 13062
CIVIL
STATE OF CALIFORNIA

REVISION	DATE
DRAWN	DATE
APPROVED	DATE
A-486	
FILE NO.	
SHEET NO.	
G2	
OF 12 SHTS	
JOB NO.	81472

SS-325