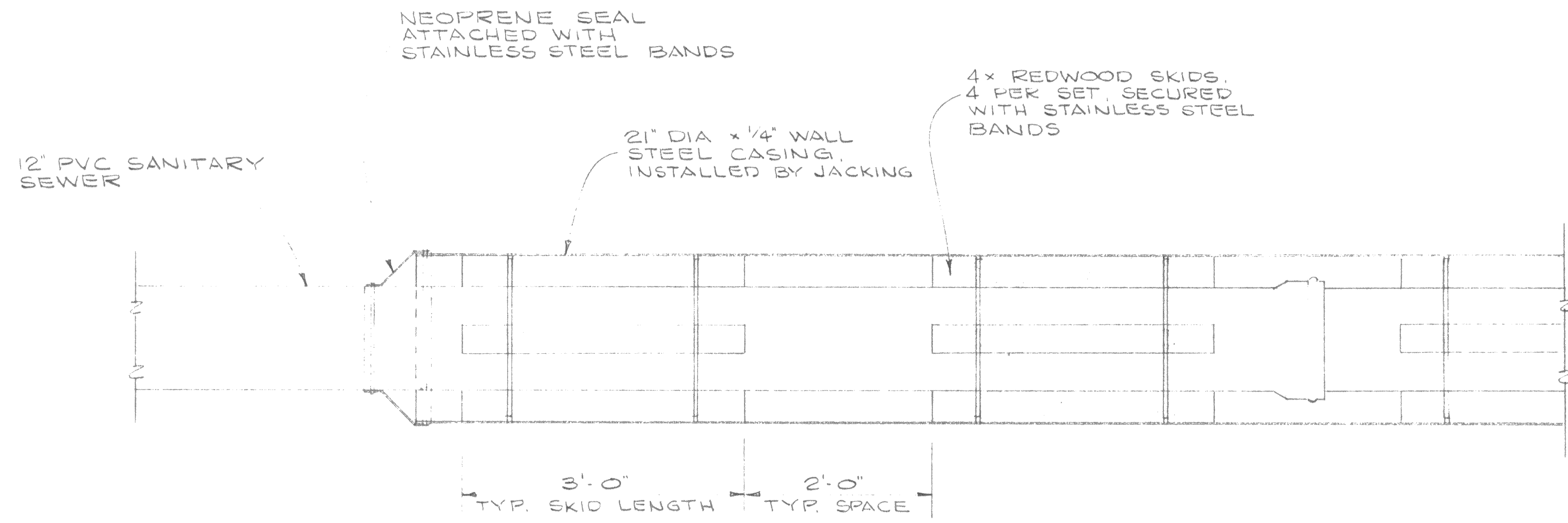
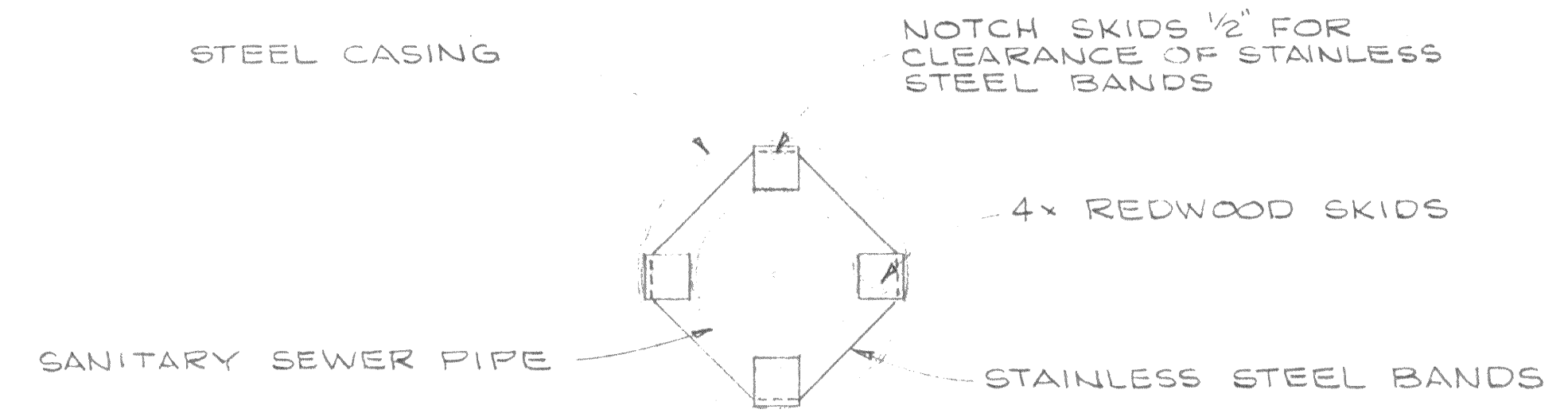


NOTES:

1. THE OUTSIDE DIAMETER OF THE PIPE & SKID ASSEMBLY SHALL BE 1/4" SMALLER THAN THE INSIDE DIAMETER OF THE CASING.
2. THE THICKNESS OF THE SKIDS MAY BE TAPERED, IF NECESSARY, TO MAKE MINOR ADJUSTMENTS IN THE GRADIENT OF THE SEWER PIPELINE.



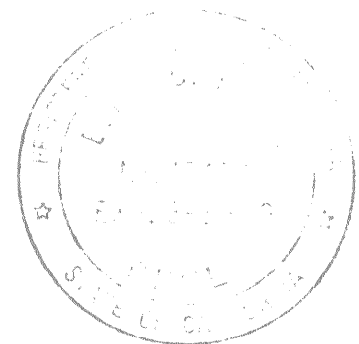
ELEVATION



SECTION

DETAILS OF INSTALLATION IN CASING

SCALE: 1" = 1'-0"



Designed	ECR	Approved	Ellis C. Rolls
Drawn	ECR	Date	JUNE, 1987
Checked	MSB		

HIGHWAY CROSSING DETAIL

rolls, anderson & rolls
 CIVIL ENGINEERS
 965 FIR STREET, CHICO, CALIFORNIA 95928 · TELEPHONE 916 895-1422

**THERMALITO IRRIGATION DISTRICT
 QUAIL RUN SEWER EXTENSION**

Drawing No.	4 OF 4
Job No.	86130

SS-322