

REVISIONS	BY

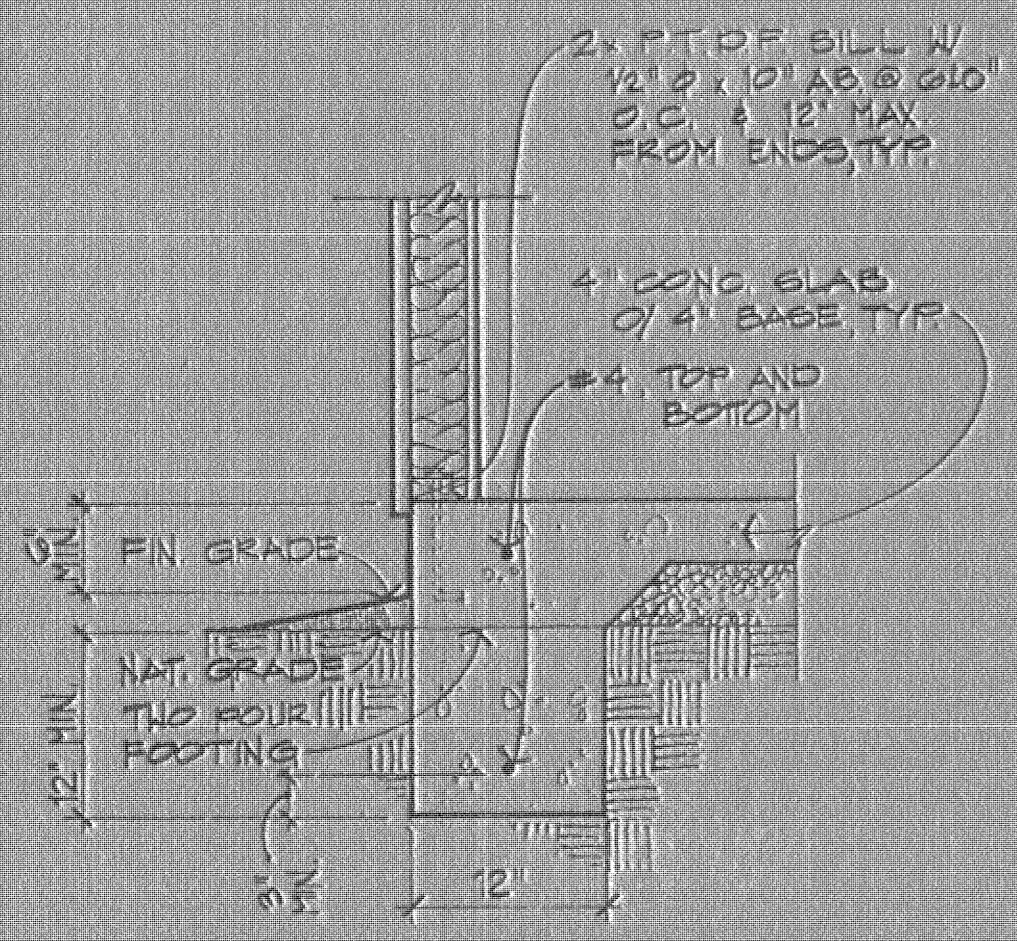
GREGORY A. PEITZ
ARCHITECT

1007 Mangrove Avenue, Suite E, Chico, CA 95926
(916) 894-5719

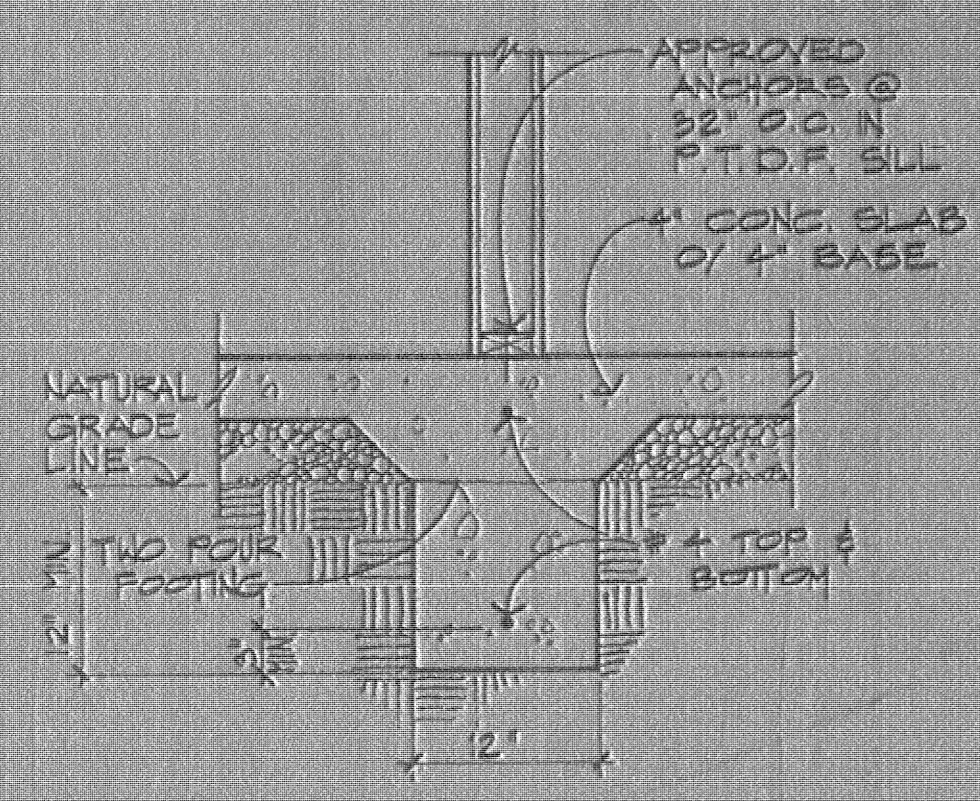
PROPOSED 4-FLEX APARTMENT BUILDING
R.V. SANTA CONSTRUCTION
SANTA FE, OROVILLE, CA

SOUTH
APTS.

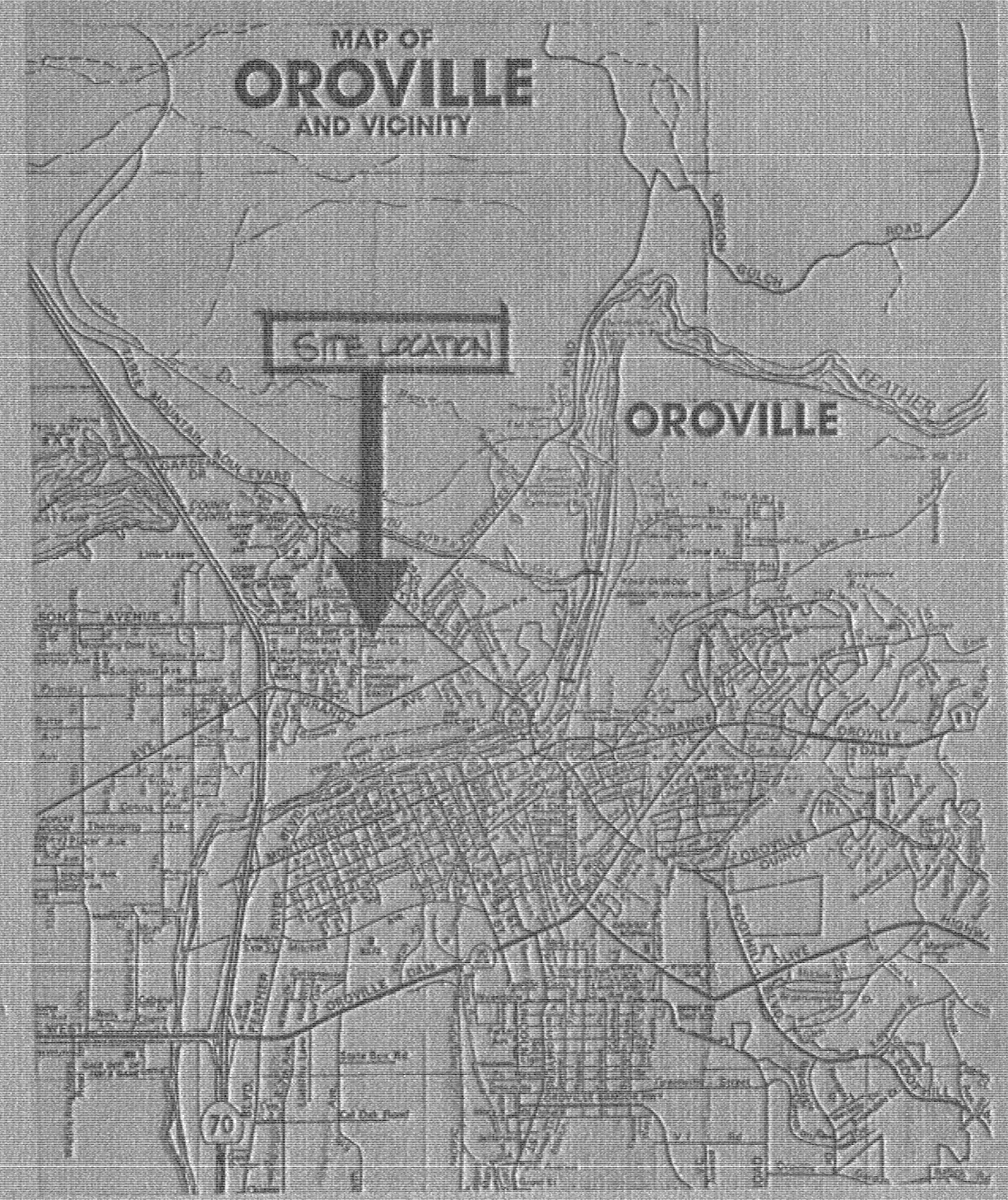
DATE: 12-7-13
SCALE:
DRAWN:
JOB: 937
SHEET: 1
SHEETS:



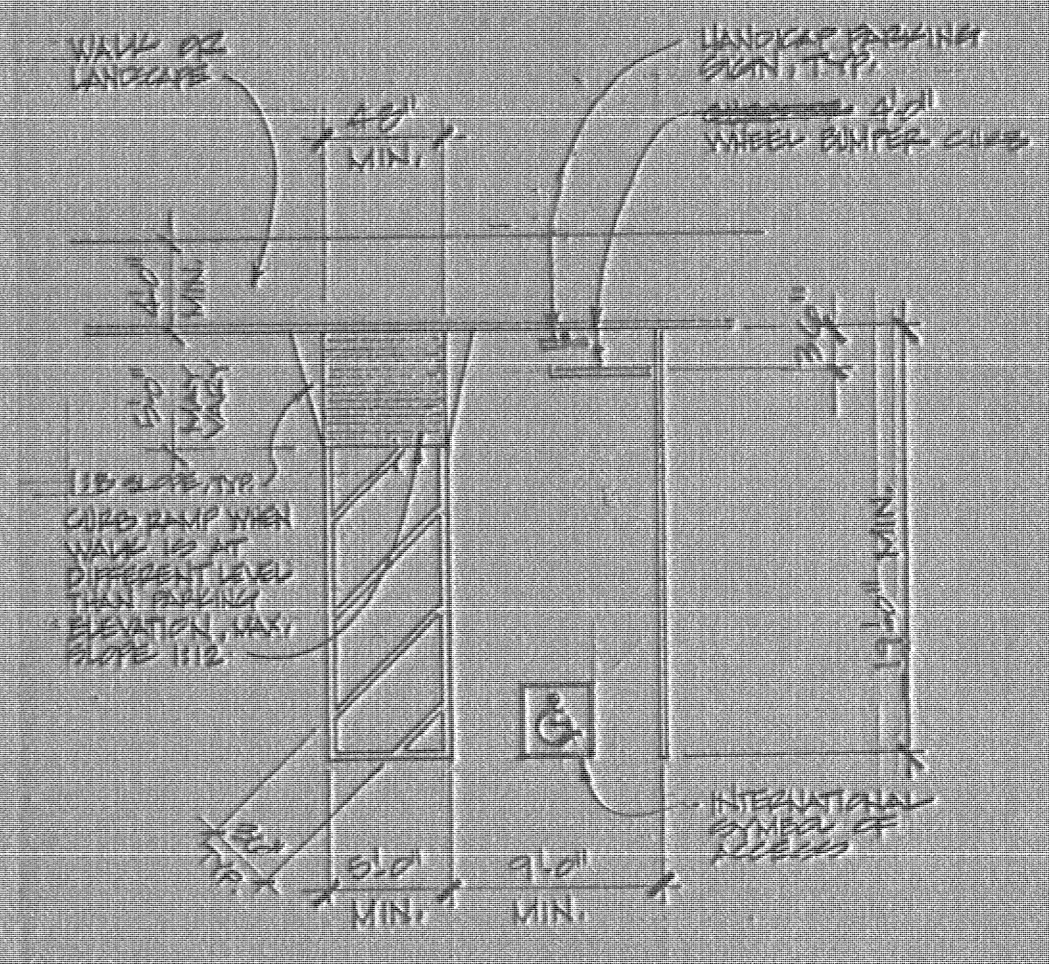
1 PERIMETER FOOTING
11-11-10



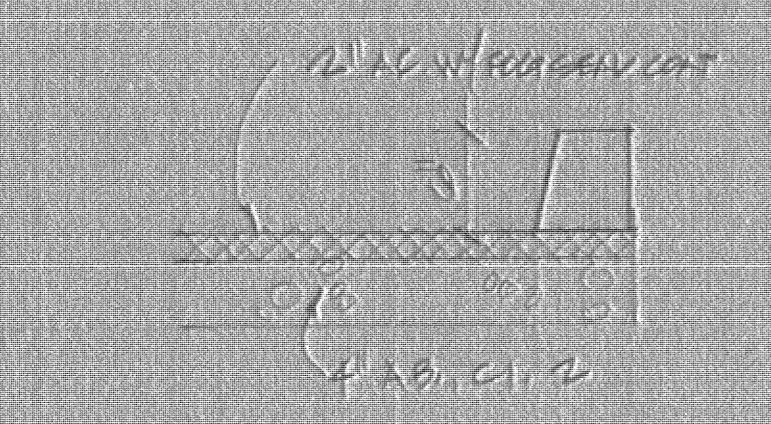
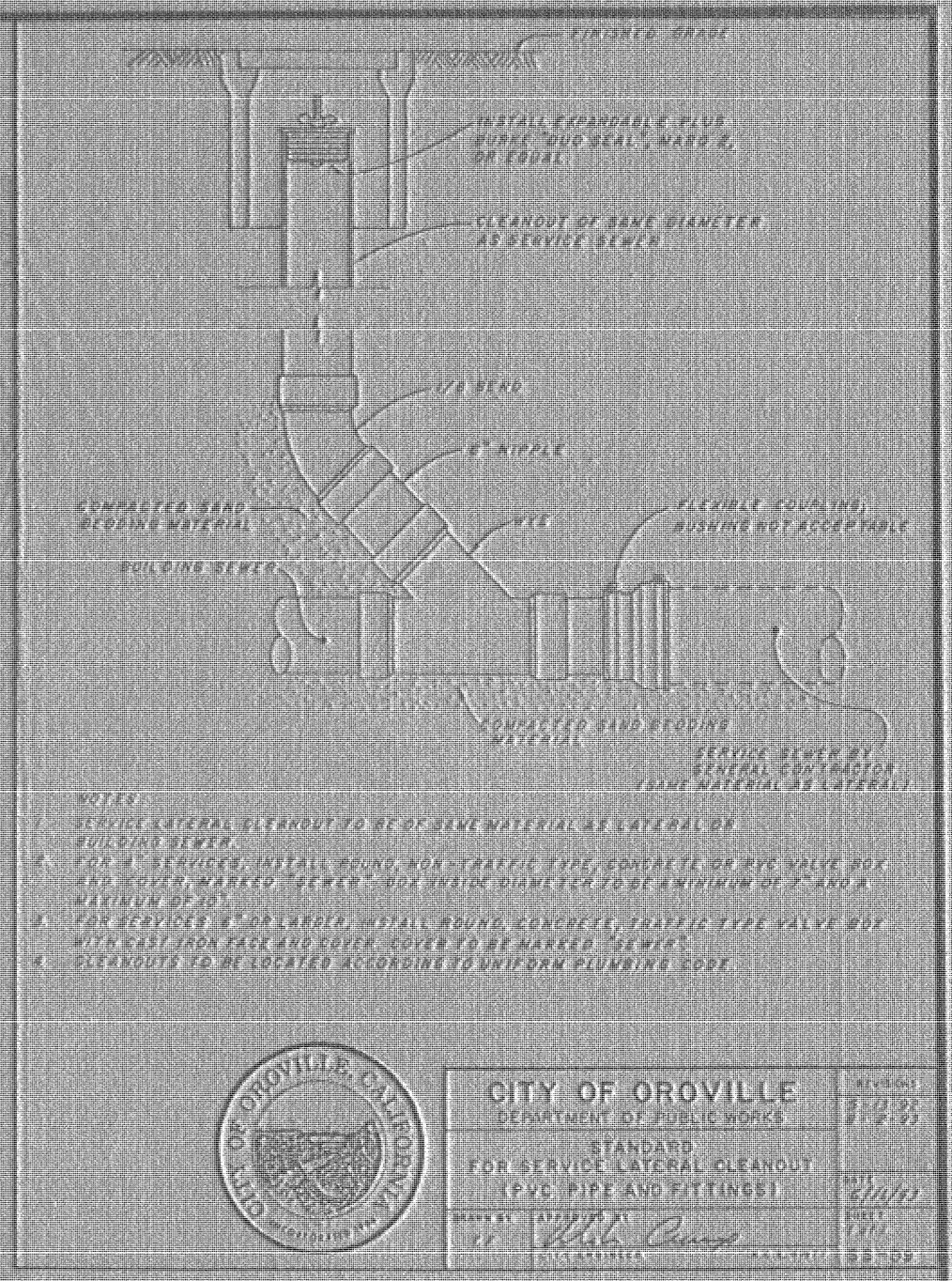
2 INTERIOR FOOTING
11-11-10



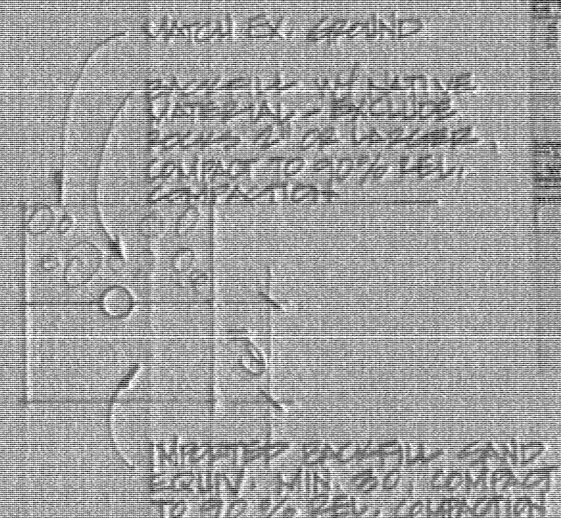
VICINITY MAP
11-11-10



TYPICAL H.C. PARKING SPACE
11-11-10

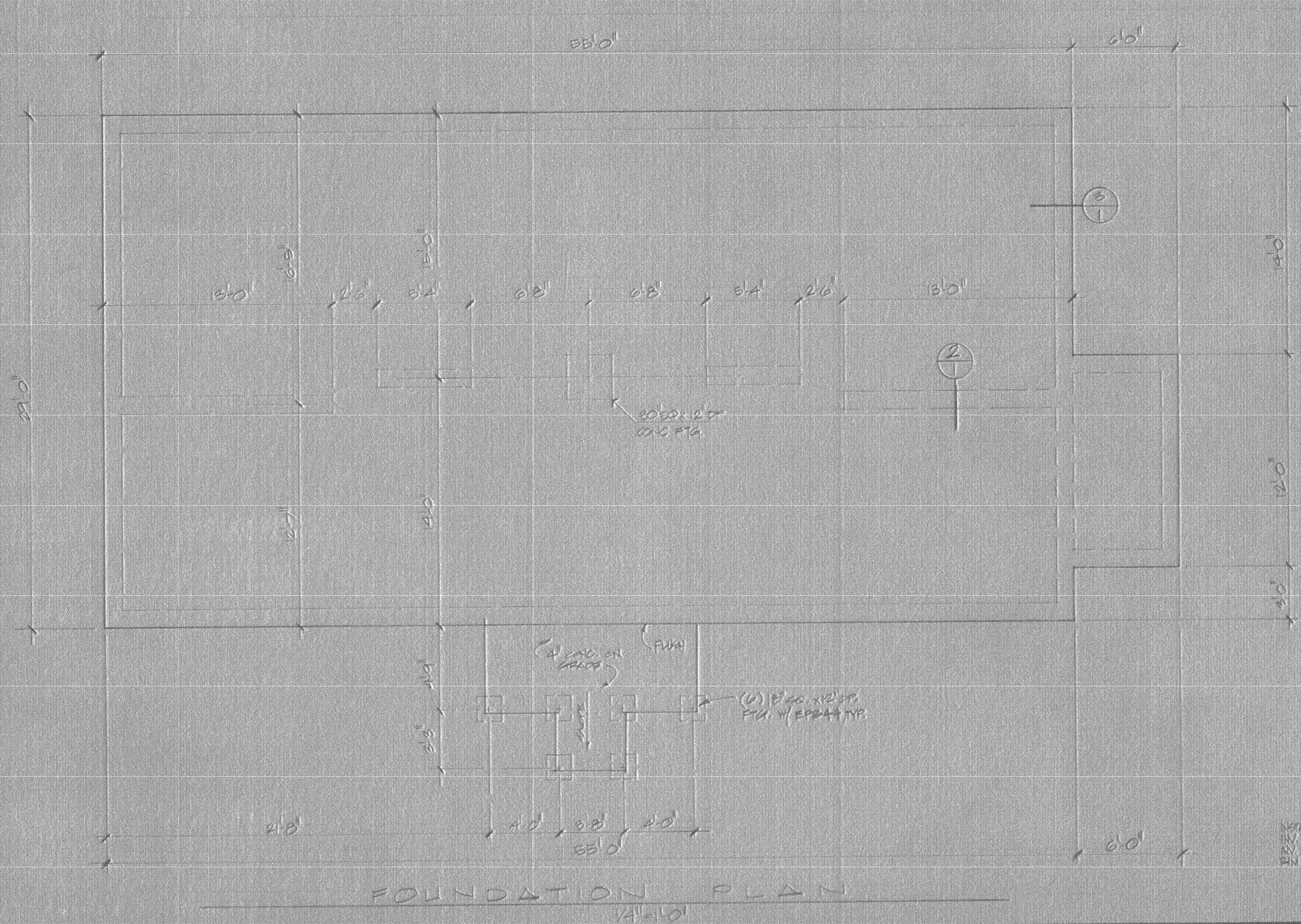


TYPICAL CURB DETAIL
11-11-10

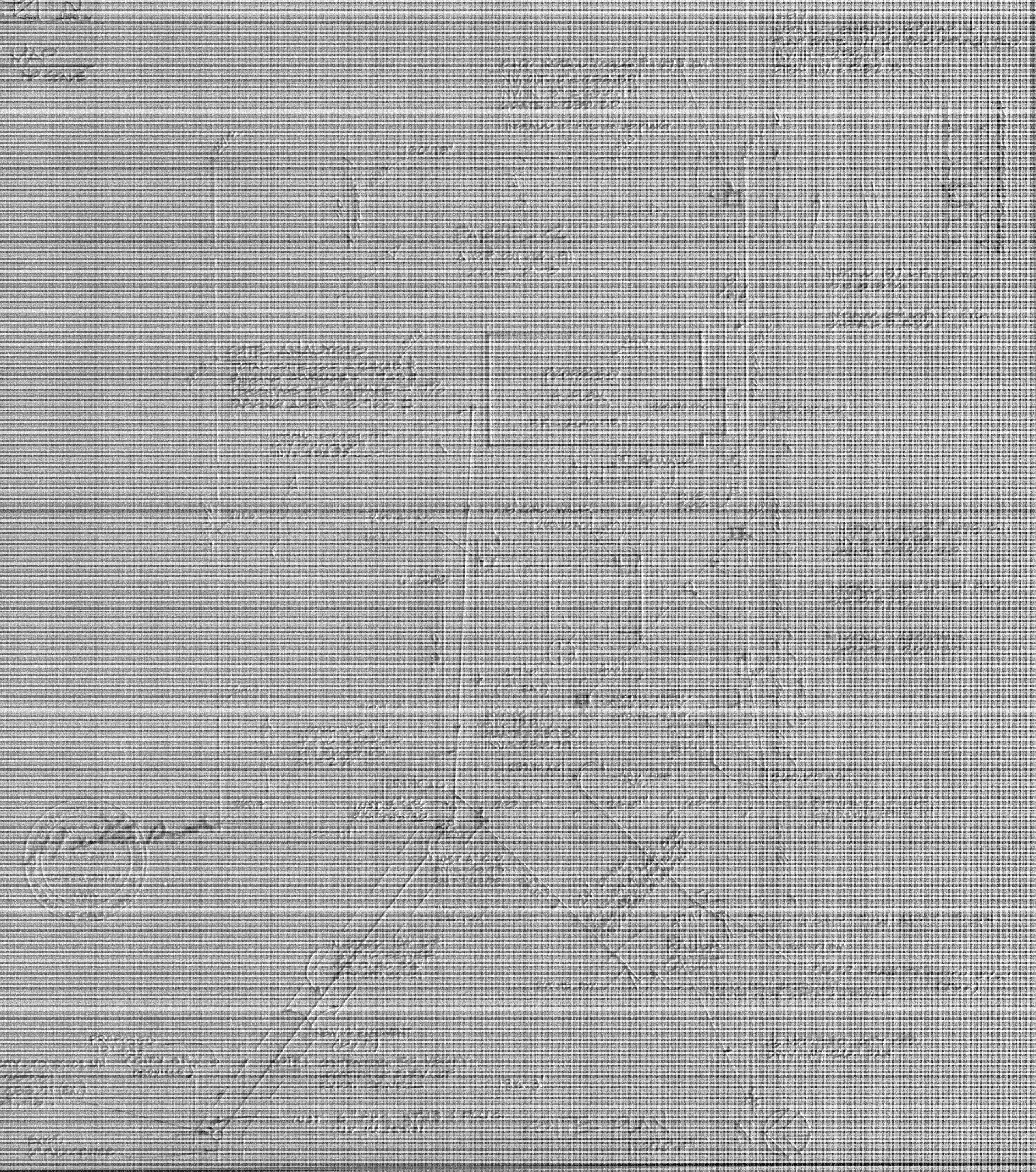


STORM DRAIN TRENCH
CROSS SECTION
11-11-10

CIVIL IMPROVEMENTS REVIEWED AND APPROVED BY:
MIKE CRUMP
CITY ENGINEER, CITY OF OROVILLE
RCE 41977



FOUNDATION PLAN
11-11-10



SITE PLAN
11-11-10