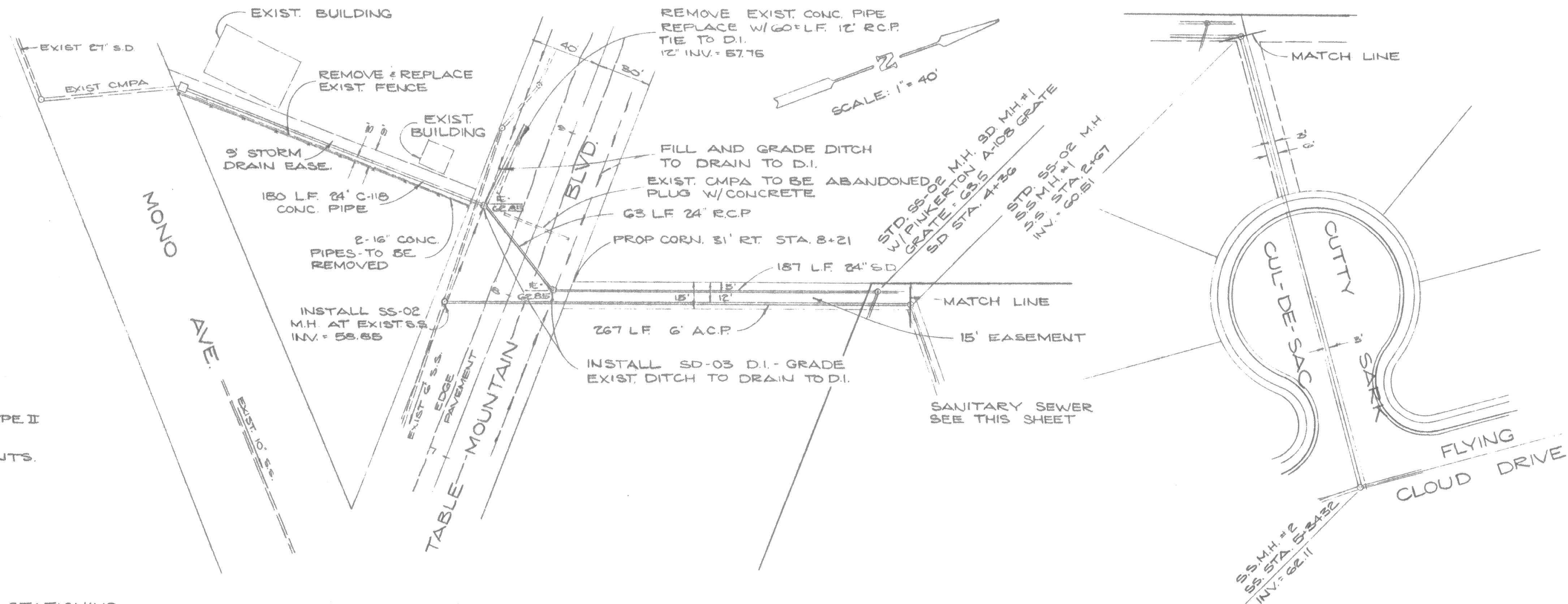
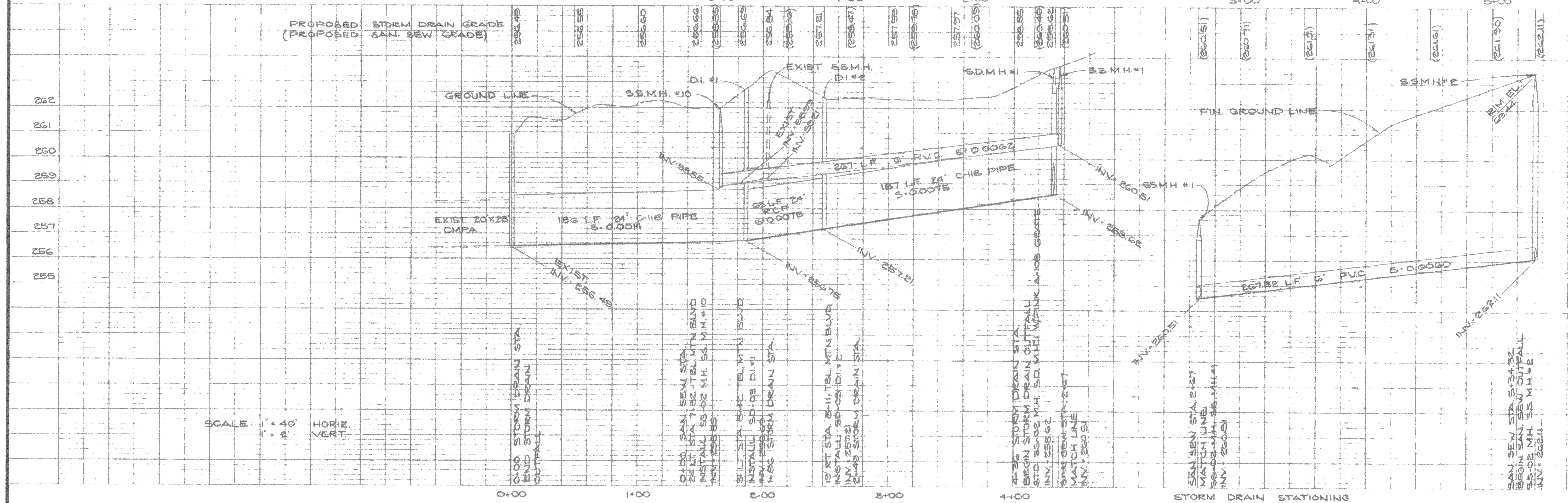


**NOTES**

1. ALL CONSTRUCTION SHALL CONFORM TO CITY OF OROVILLE STANDARDS AND SPECIFICATIONS.
2. CONTRACTOR TO VERIFY EXIST. INVERTS.
3. CONTRACTOR MAY SUBSTITUTE CL. 1500 TYPE II A.C.P. STORM DRAIN PIPE IN LIEU OF C-118 CONC. PIPE.
4. CONCRETE PIPE TO HAVE MORTAR JOINTS.



**SANITARY SEWER STATIONING**



SCALE: 1" = 40' HORIZ.  
1" = 2' VERT.

Designed	BD	Approved	<i>[Signature]</i>
Drawn	BD	Date	AUGUST, 1977
Checked	EA		

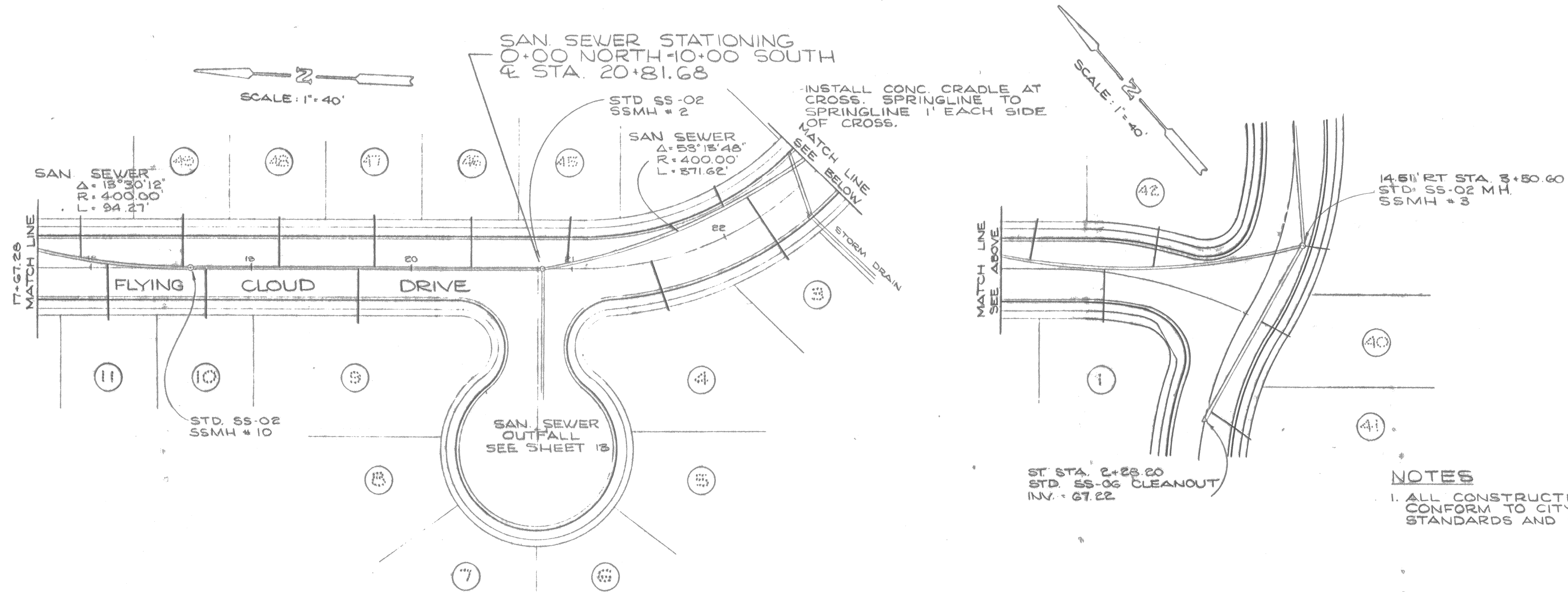
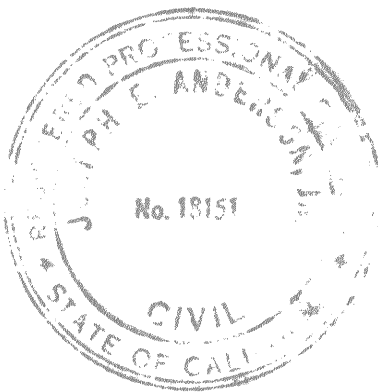
**SEWER & STORM DRAIN  
OUTFALL LINES**

**ROLLS, ANDERSON & ROLLS**  
CIVIL ENGINEERS  
965 FIR STREET • CHICO, CALIFORNIA 95926 • TELEPHONE 916-342-8319

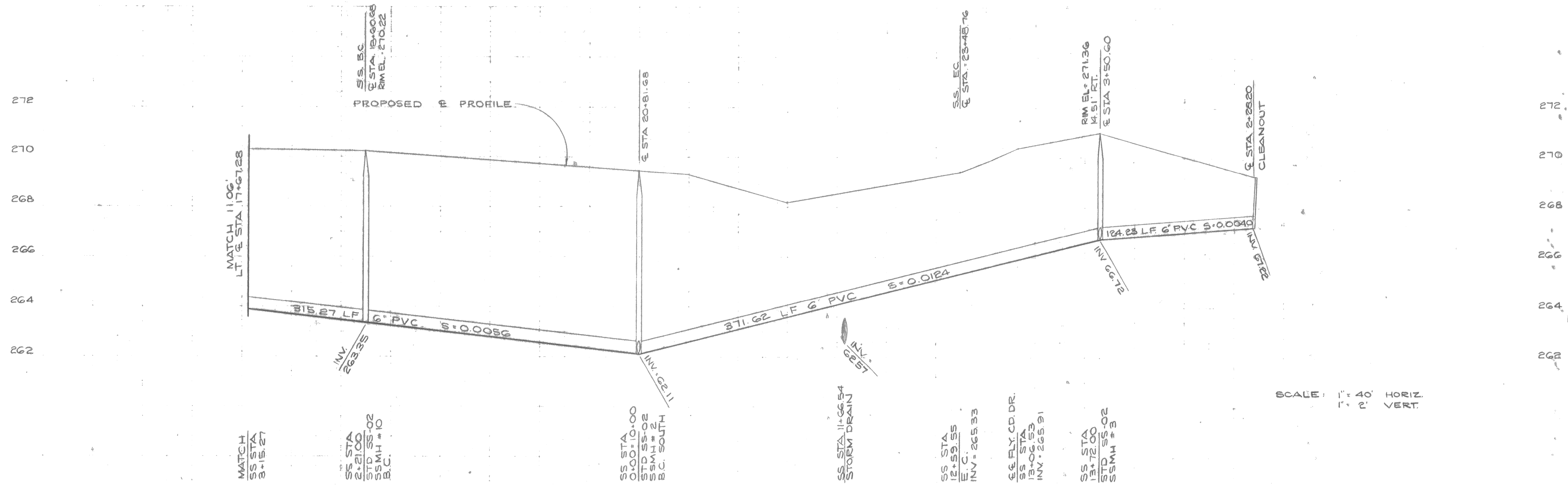
**CLIPPER SHIP ESTATES  
IMPROVEMENT PLANS**

Drawing No.	13 OF 20
Job No.	76137

35-278-1-0



**NOTES**  
 1. ALL CONSTRUCTION SHALL CONFORM TO CITY OF ORVILLE STANDARDS AND SPECIFICATIONS.



SCALE: 1" = 40' HORIZ.  
 1" = 2' VERT.

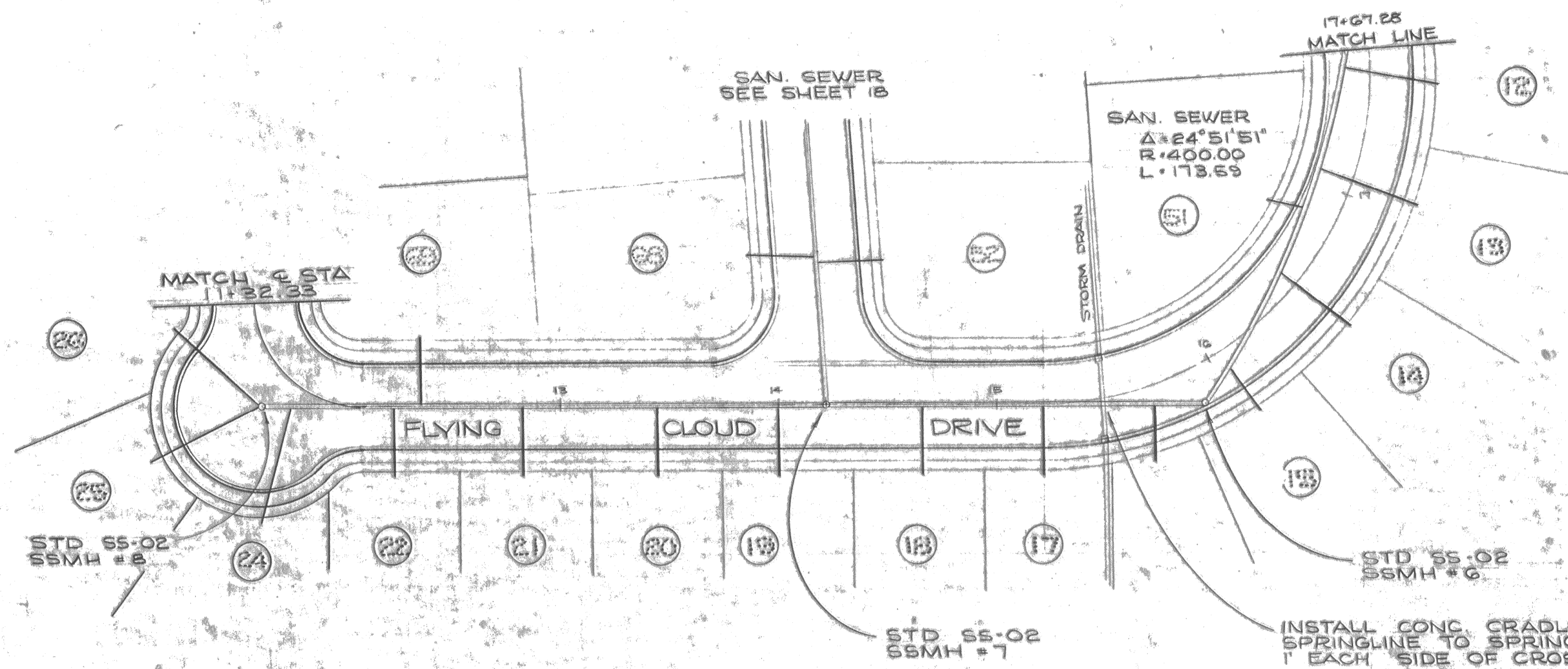
Designer	BD	Approved	<i>J.P. Anderson</i>
Drawn	BD, WH	Date	AUGUST, 1977
Checked	E A		

**SANITARY SEWER**

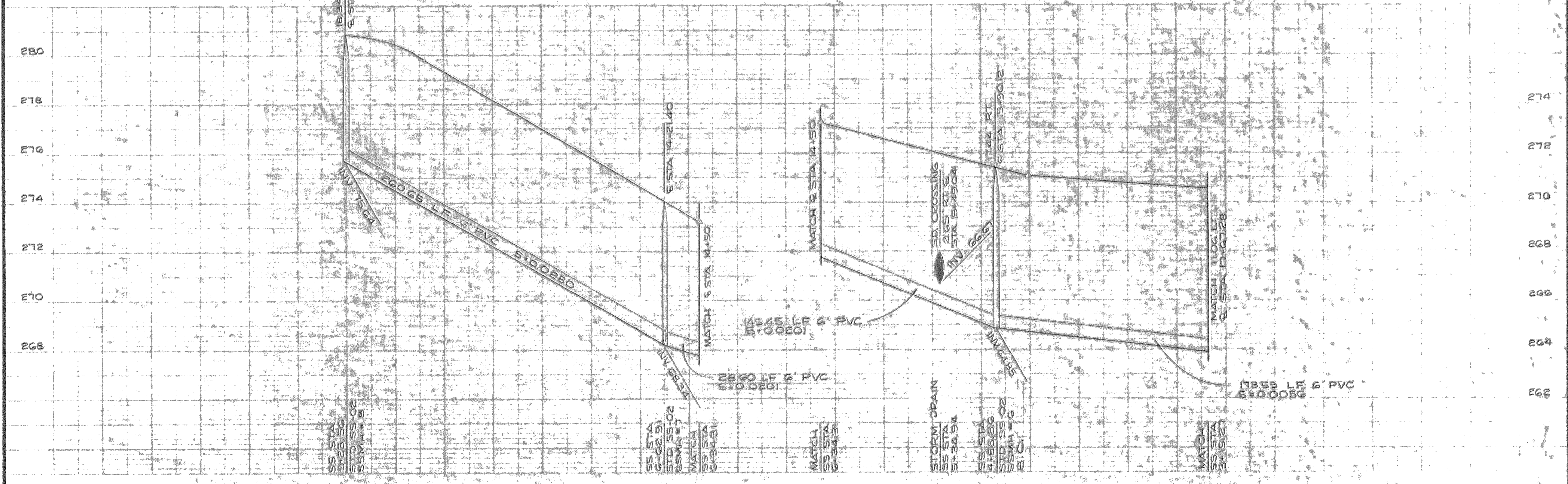
**ROLLS, ANDERSON & ROLLS**  
 CIVIL ENGINEERS  
 965 FIR STREET • CHICO, CALIFORNIA 95926 • TELEPHONE 916 342 8319

**CLIPPER SHIP ESTATES  
 IMPROVEMENT PLANS**

SCALE 1" = 40'



**NOTES**  
 1. ALL CONSTRUCTION SHALL CONFORM TO CITY OF OROVILLE STANDARDS AND SPECIFICATIONS.



Designed **BD**  
 Drawn **BD, W.H.**  
 Checked **EA**  
 Approved *J. Anderson*  
 Date **AUGUST, 1977**

**SANITARY SEWER**

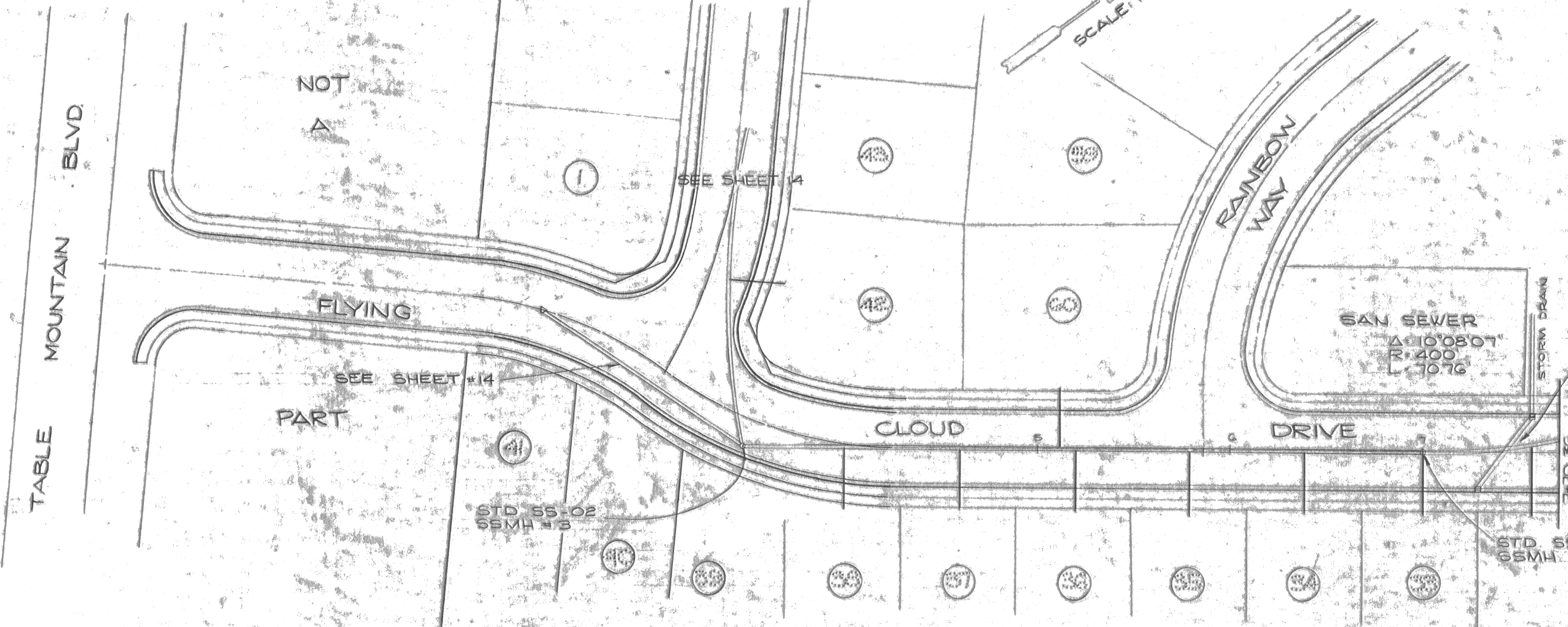
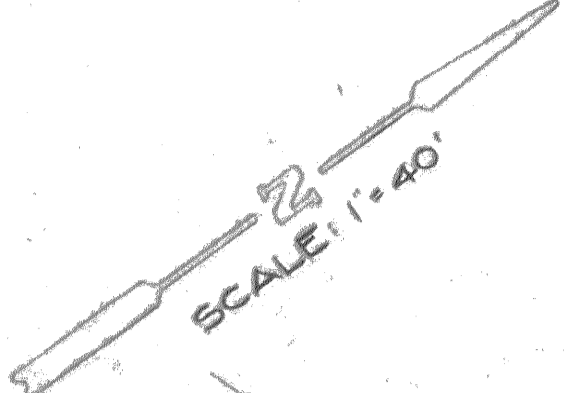
**ROLLS, ANDERSON & ROLLS**  
 CIVIL ENGINEERS  
 905 FIR STREET • OHIO, CALIFORNIA 95976 • TELEPHONE 916-342-8319

**CLIPPER SHIP ESTATES**  
 IMPROVEMENT PLANS

Drawing No. **15** OF 20  
 Job No. **76137**

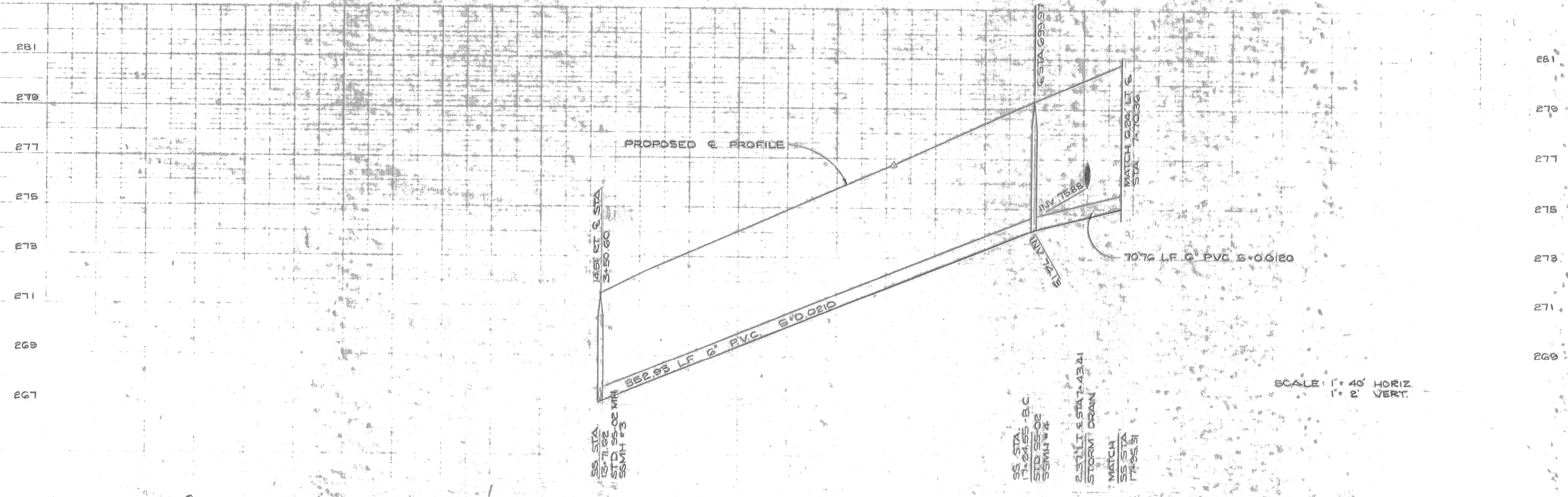
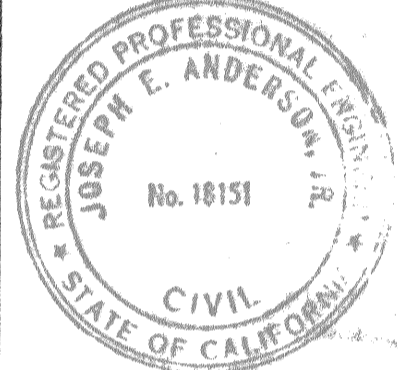
55-278-3-6

BENCH MARK RR SPIKE IN  
BASE OF RR ELEV. 266.15



INSTALL CONC GRADLE AT  
CROSS SPRINGLINE TO  
SPRINGLINE 1' EACH SIDE  
OF CROSS

**NOTES**  
ALL CONSTRUCTION SHALL CONFORM  
TO CITY OF OROVILLE STANDARDS  
AND SPECIFICATIONS.



SCALE: 1" = 40' HORIZ.  
1" = 2' VERT.

Designed **BD**  
Drawn **BD, W.H.**  
Checked **EA**  
Approved *J. Anderson*  
AUGUST, 1977

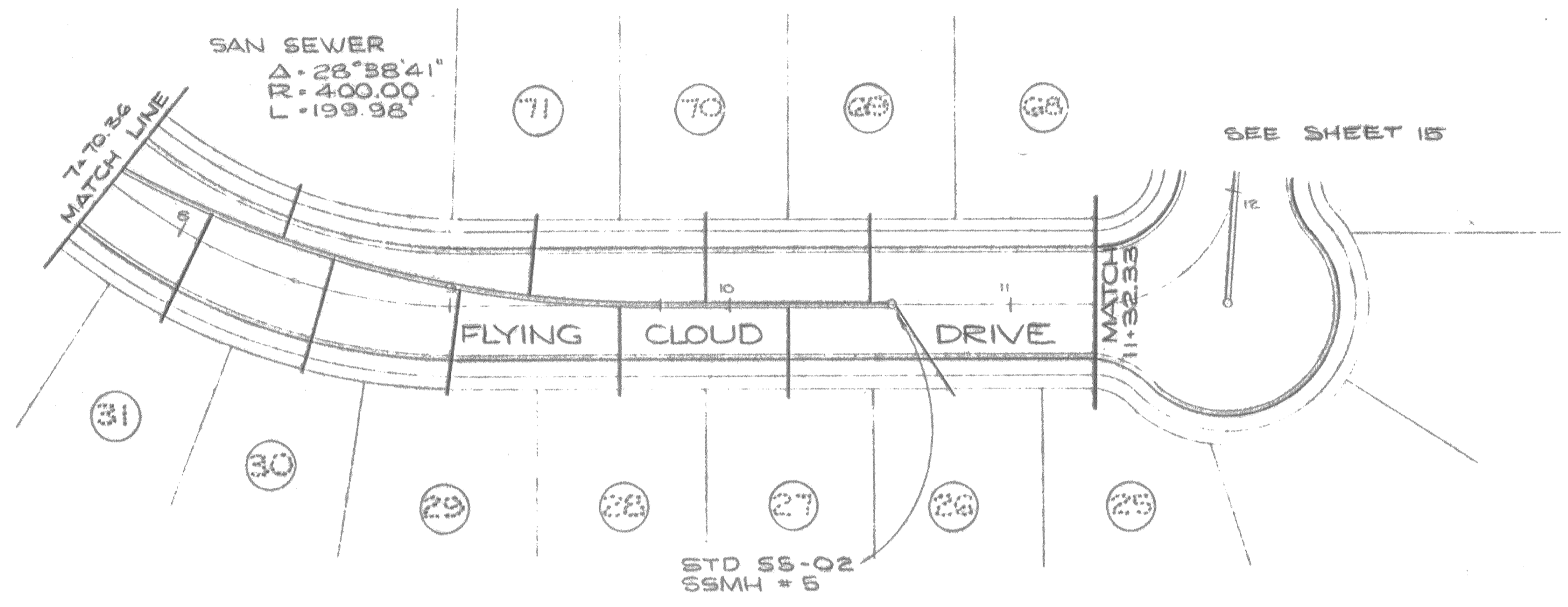
**SANITARY SEWER**



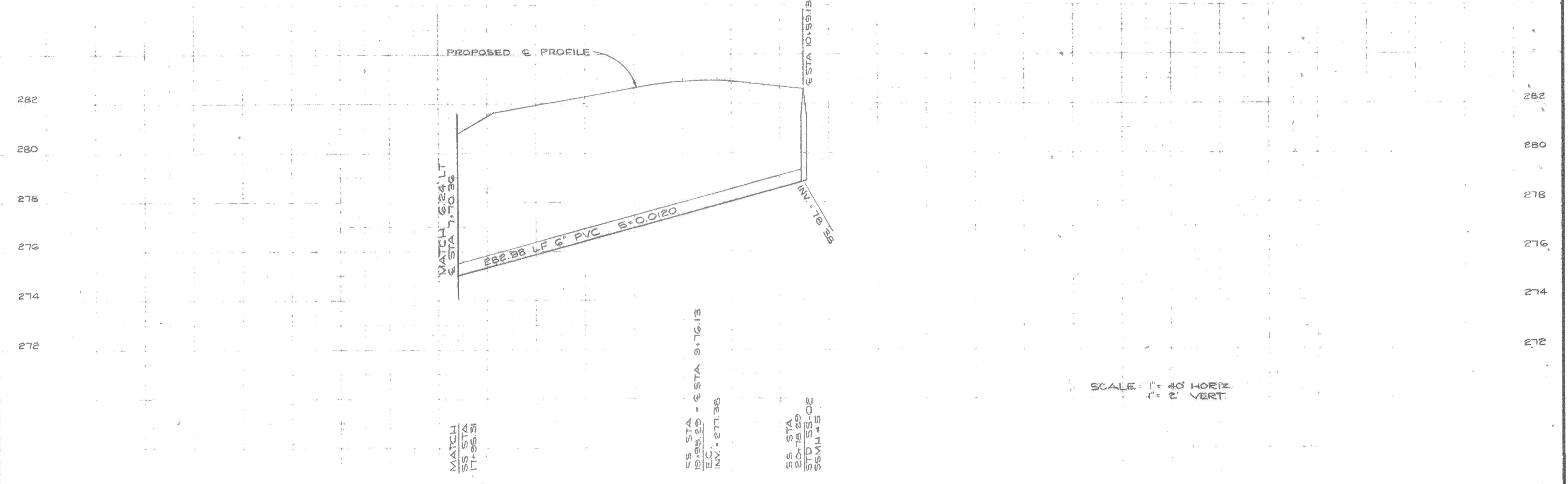
**CLIPPER SHIP ESTATES  
IMPROVEMENT PLANS**

Drawing No. **16 OF 20**  
Job No. **76137**

SCALE: 1" = 40'



**NOTES**  
 1. ALL CONSTRUCTION SHALL CONFORM TO CITY OF OROVILLE STANDARDS AND SPECIFICATIONS.



SCALE: 1" = 40' HORIZ.  
 1" = 2' VERT.

Designer	BD	Approved	<i>J. E. Anderson</i>
Drawn	BD, WH	Date	AUGUST, 1977
Checked	EA		

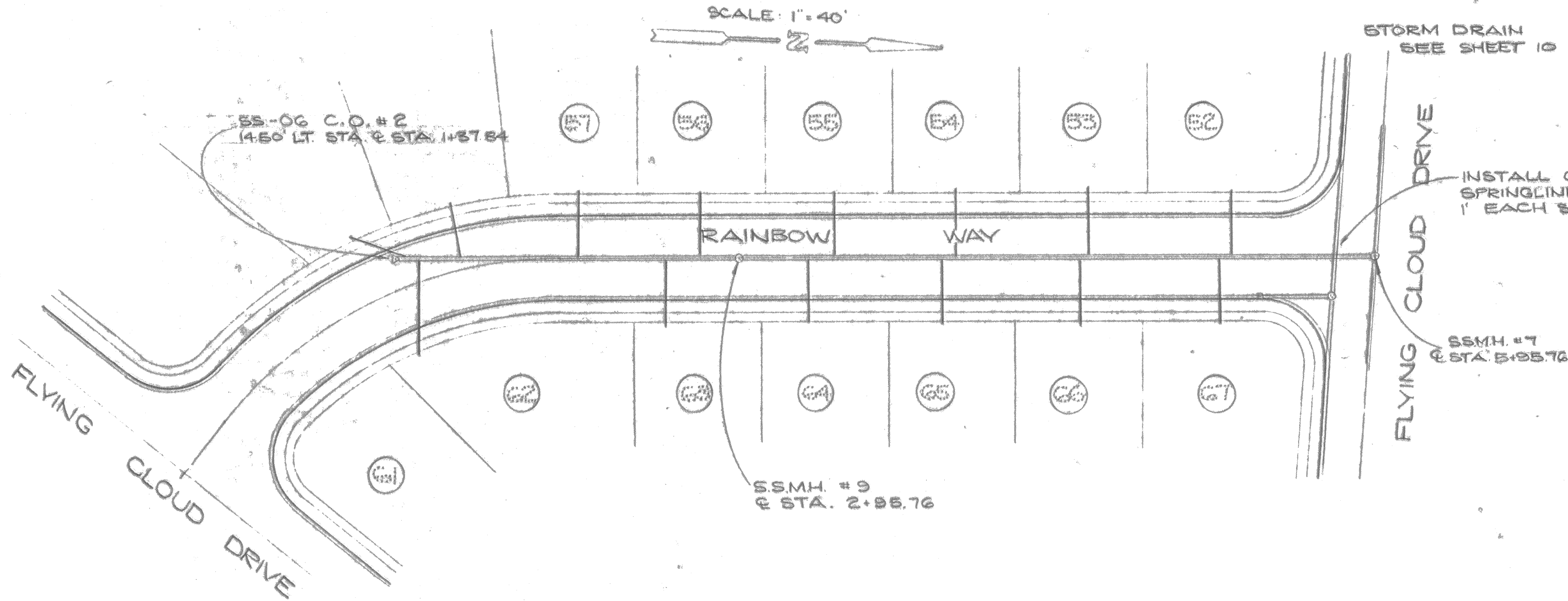
SANITARY SEWER



CLIPPER SHIP ESTATES  
 IMPROVEMENT PLANS

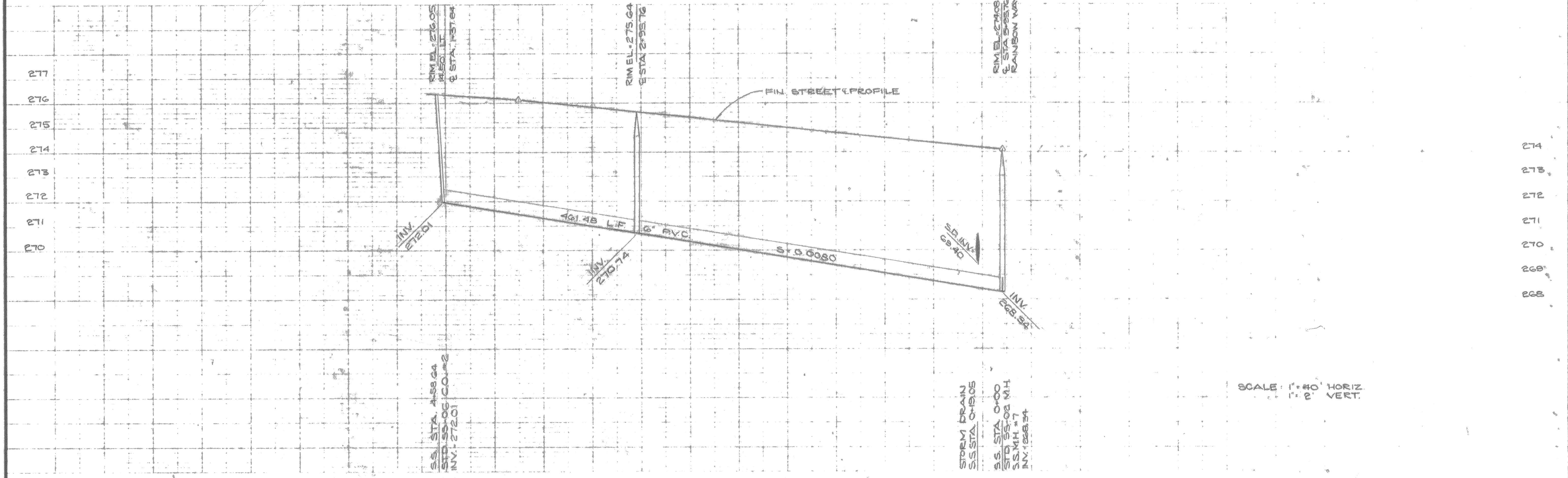
Drawing No.	17 OF 20
Job No.	76137

55-278-5-6



INSTALL CONC CRADLE AT CROSS.  
SPRINGLINE TO SPRINGLINE  
1' EACH SIDE OF CROSS.

**NOTES**  
1. ALL CONSTRUCTION SHALL CONFORM  
TO CITY OF ORVILLE STANDARDS  
AND SPECIFICATIONS.



Designed	BD	Approved	<i>J. Anderson</i>
Drawn	BD	Date	AUGUST, 1977
Checked	EA		

SANITARY SEWER



CLIPPER SHIP ESTATES  
IMPROVEMENT PLANS

Drawing No  
18 OF 20  
Job No  
76137

SS-278-b-6