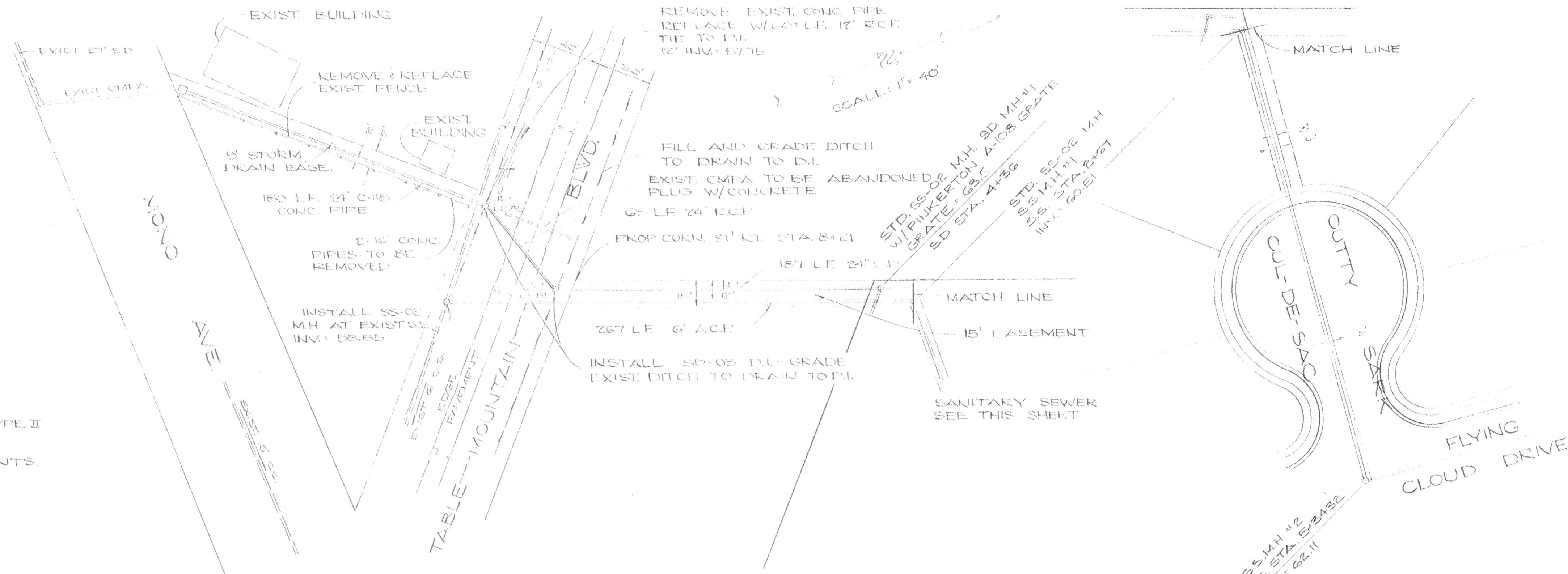
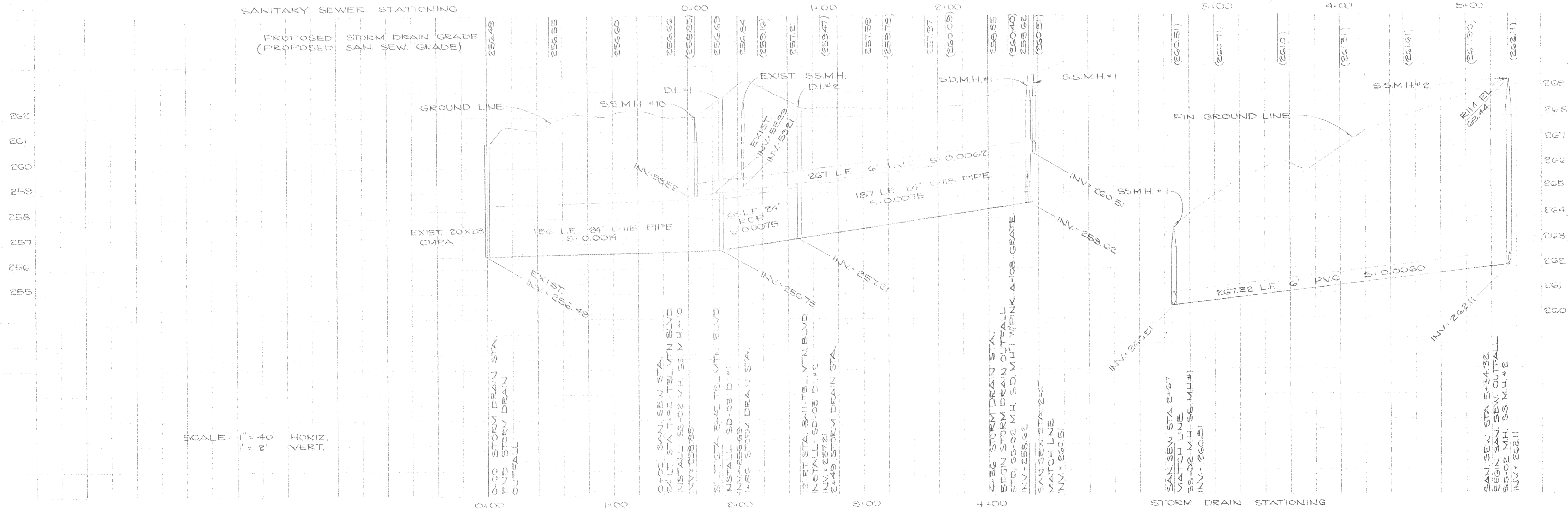


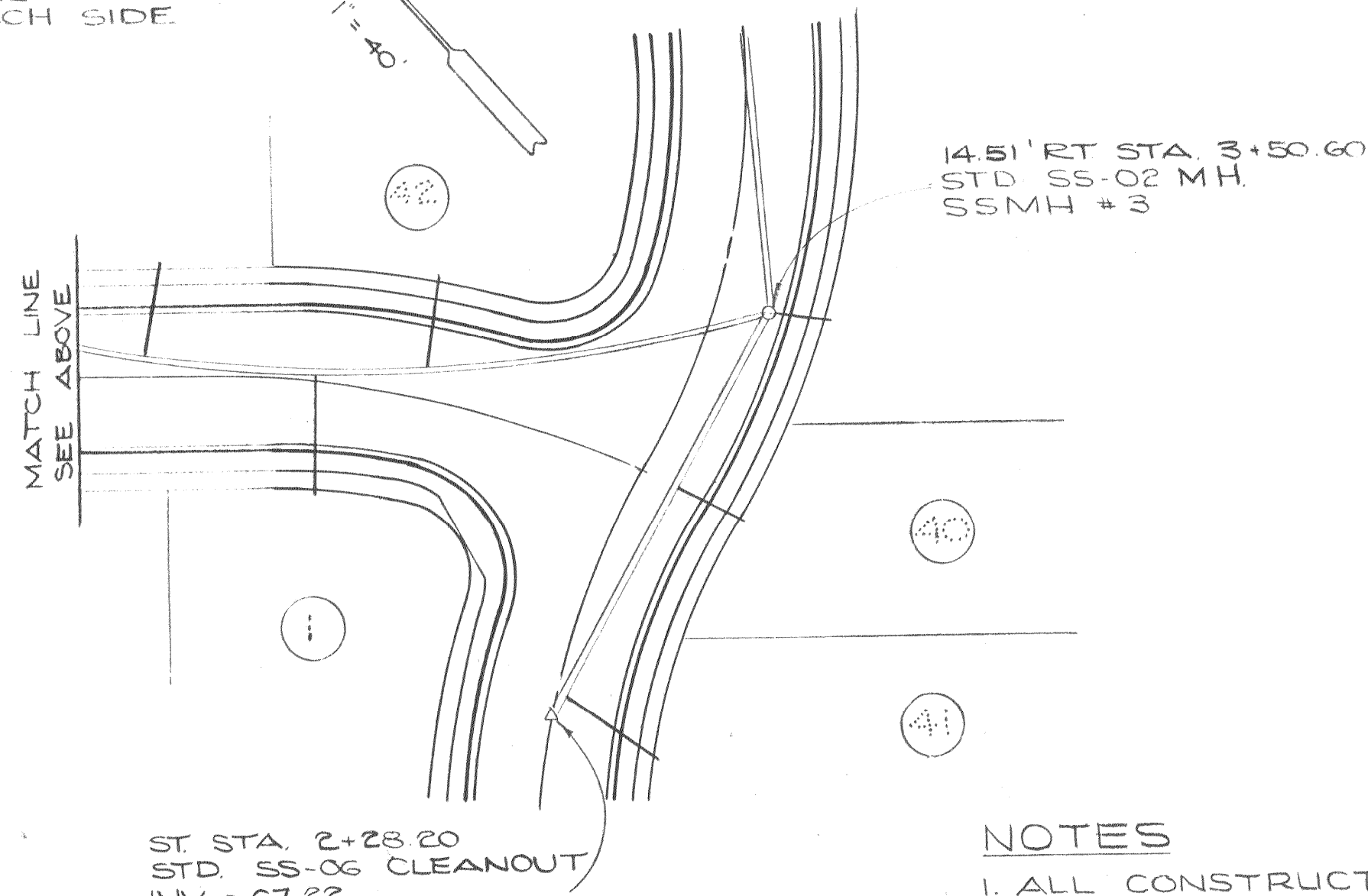
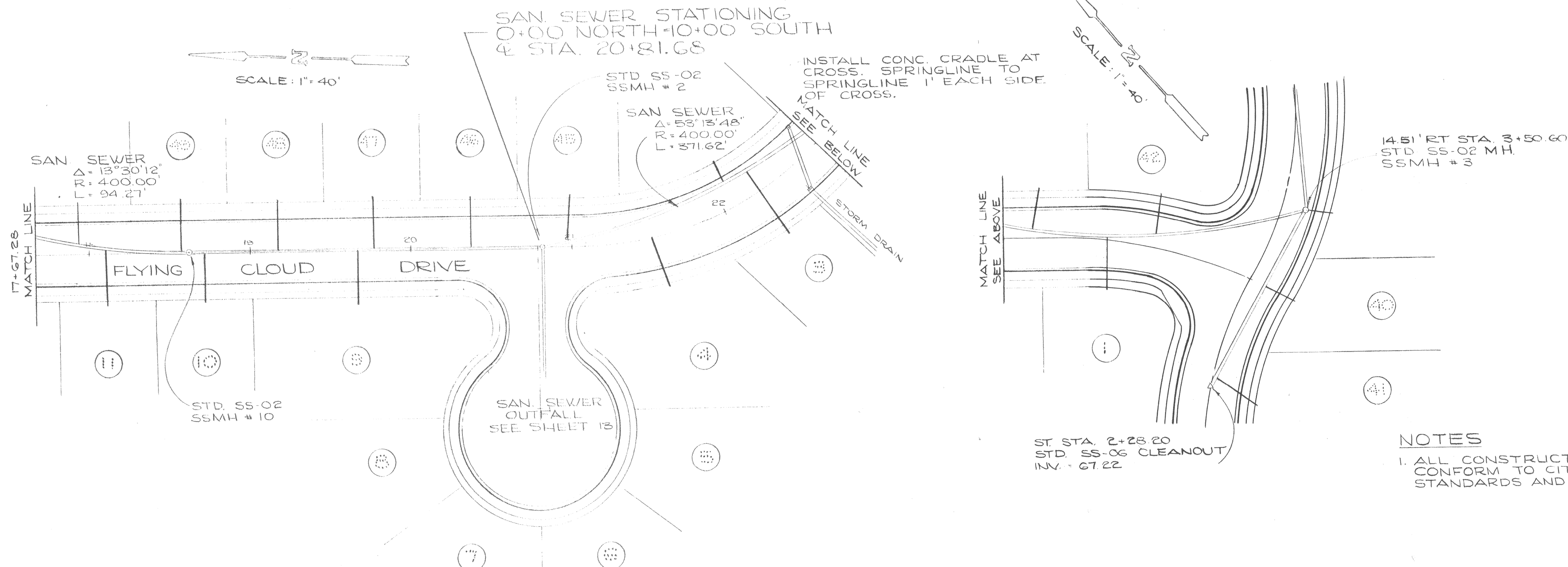
NOTES

1. ALL CONSTRUCTION SHALL CONFORM TO CITY OF OROVILLE STANDARDS AND SPECIFICATIONS.
2. CONTRACTOR TO VERIFY EXIST INVERTS.
3. CONTRACTOR MAY SUBSTITUTE CL. 1500 TYPE II A.C.P. STORM DRAIN PIPE IN LIEU OF C-15 CONC. PIPE.
4. CONCRETE PIPE TO HAVE MORTAR JOINTS.

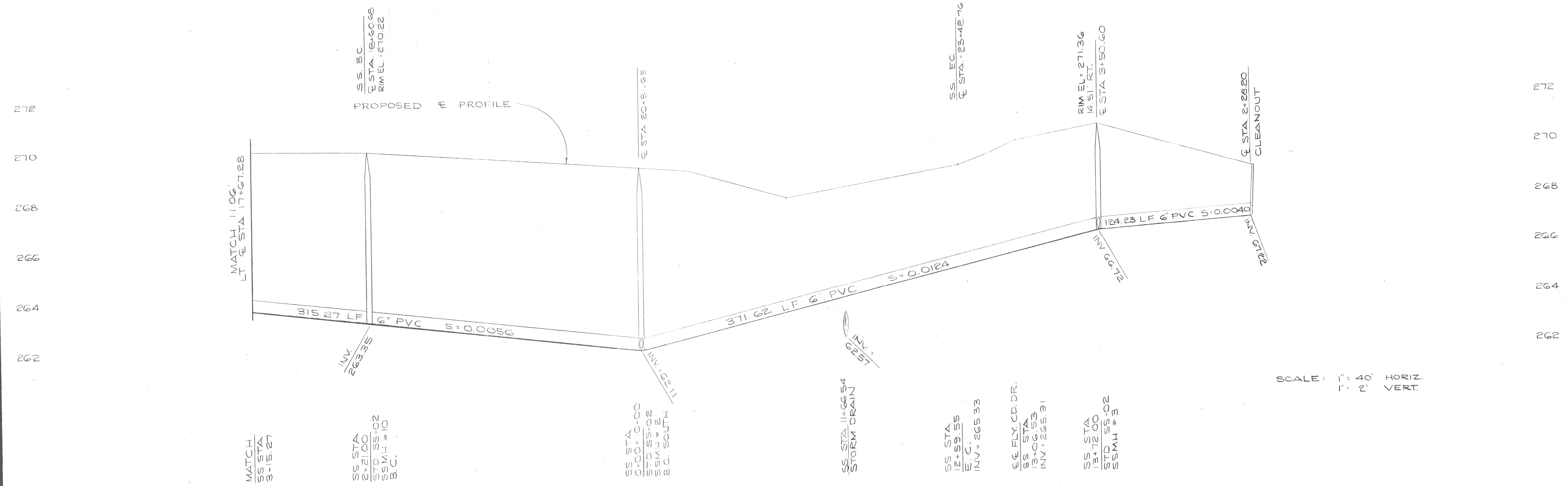
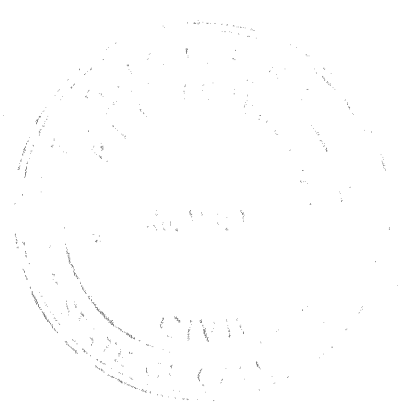


SANITARY SEWER STATIONING





NOTES
 1. ALL CONSTRUCTION SHALL CONFORM TO CITY OF GROVILLE STANDARDS AND SPECIFICATIONS.



SCALE: 1" = 40' HORIZ.
 1" = 2' VERT.