

V I C I N I T Y M A P

CITY OF OROVILLE
 OROVILLE, CALIFORNIA

PLANS FOR CONSTRUCTION OF
SANITARY SEWER PROJECT
 FOOTHILL BOULEVARD-GLEN DRIVE SEWER MAIN EXTENSION

MAYOR: CONRAD W. WEISKER

Council Members

- Albert J. Walsh
- C. Myron Buck Jr.
- Jack J. McKillop
- Dair A. Tandy
- James Savercool
- Walter C. Shaner

CITY ADMINISTRATOR: Ralph M. Carpenter
 DIRECTOR OF ENGINEERING: Harold Kroeger

I N D E X T O S H E E T S

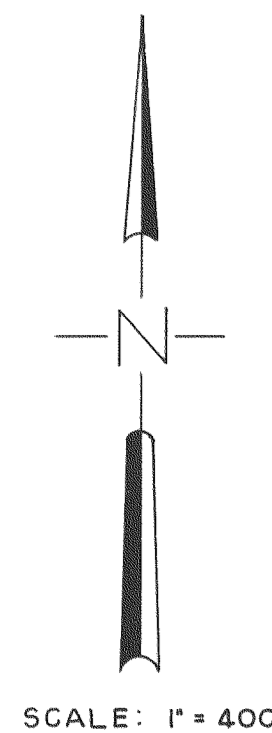
<u>SHEET</u>	<u>TITLE</u>	<u>SHEET</u>	<u>TITLE</u>
1.	INDEX AND VICINITY MAP	10.	PLAN AND PROFILE "C" LINE
2.	GENERAL MAP & TEST HOLE DATA	11.	PLAN AND PROFILE "C" LINE
3.	PLAN AND PROFILE "A" LINE	12.	PLAN AND PROFILE "C" LINE
4.	PLAN AND PROFILE "A" LINE	13.	PLAN AND PROFILE "C" LINE
5.	PLAN AND PROFILE "A" LINE	14.	MISCELLANEOUS DETAILS
6.	PLAN AND PROFILE "A" LINE		
7.	PLAN AND PROFILE "A" LINE		
8.	PLAN AND PROFILE "B" AND "C" LINE		
9.	PLAN AND PROFILE "C" LINE		

SEE SS 235B FOR L.C. MAP NO. & MAN No.

L E G E N D

- Proposed sewer line and manhole
- Centerline
- Right of way
- Surfaced street
- Stream or small ditch
- Fence
- Culvert
- Building
- Edge of pavement
- Tree
- Bench mark
- Construction easement
- Sewer easement
- Construction easement

CITY OF OROVILLE OROVILLE, CALIFORNIA FOOTHILL BOULEVARD-GLEN DRIVE SEWER MAIN EXTENSION INDEX & VICINITY MAP		
DEWANTE AND STOWELL SANITARY AND CIVIL ENGINEERS-SACRAMENTO, CALIFORNIA		
DRAWN: G.E.Z. CHECKED: R.E.D. DATE: Jul 26, '62	SUBMITTED: APPROVED: <i>Edwin R. Stowell</i> <i>Amoroso</i>	SHEET NO. 1 OF 14



SCALE: 1" = 400'

NOTES:

1. Test holes #2 #4 #5 & #7 were cored holes. Coring apparatus not capable of penetrating cobbles. Test holes #1, #3, & #6 were made with backhoe because of refusal of coring apparatus at 2' to 3' depth due to hitting cobbles.
2. Data is for information only, and is not a guarantee of the material or conditions to be encountered.
3. No base rock was encountered in the test holes or excavations. If base rock should be encountered, sewer grade will be raised to eliminate excavation in base rock. Base rock as herein considered shall be defined as a solid rock base course or strata.

MAP No - MH. No.

SS-185	A3-A26
SS-184	A3-A7
SS-183	A7-A10
SS-182	A10-A12
SS-181	A12-B1
SS-237	B1-C5
SS-236	C5-C12
SS-238	C12-C16
SS-239	C16-C21
SS-240	C21-C25
SS-241	C25-C29

TEST HOLE #1
 0-3' Sandy soil, with cobbles to 8"
 3'-8' Whitish sandy clay with some gravel & cobbles to 4"

TEST HOLE #2
 0'-2' Brown sandy silt with cobbles
 2'-9' Light tan clay with some gravel
 9' Gravel & cobbles (refusal)

TEST HOLE #4
 0-5 1/2' Brown silt w/cobbles
 5 1/2' - Cobble (refusal)

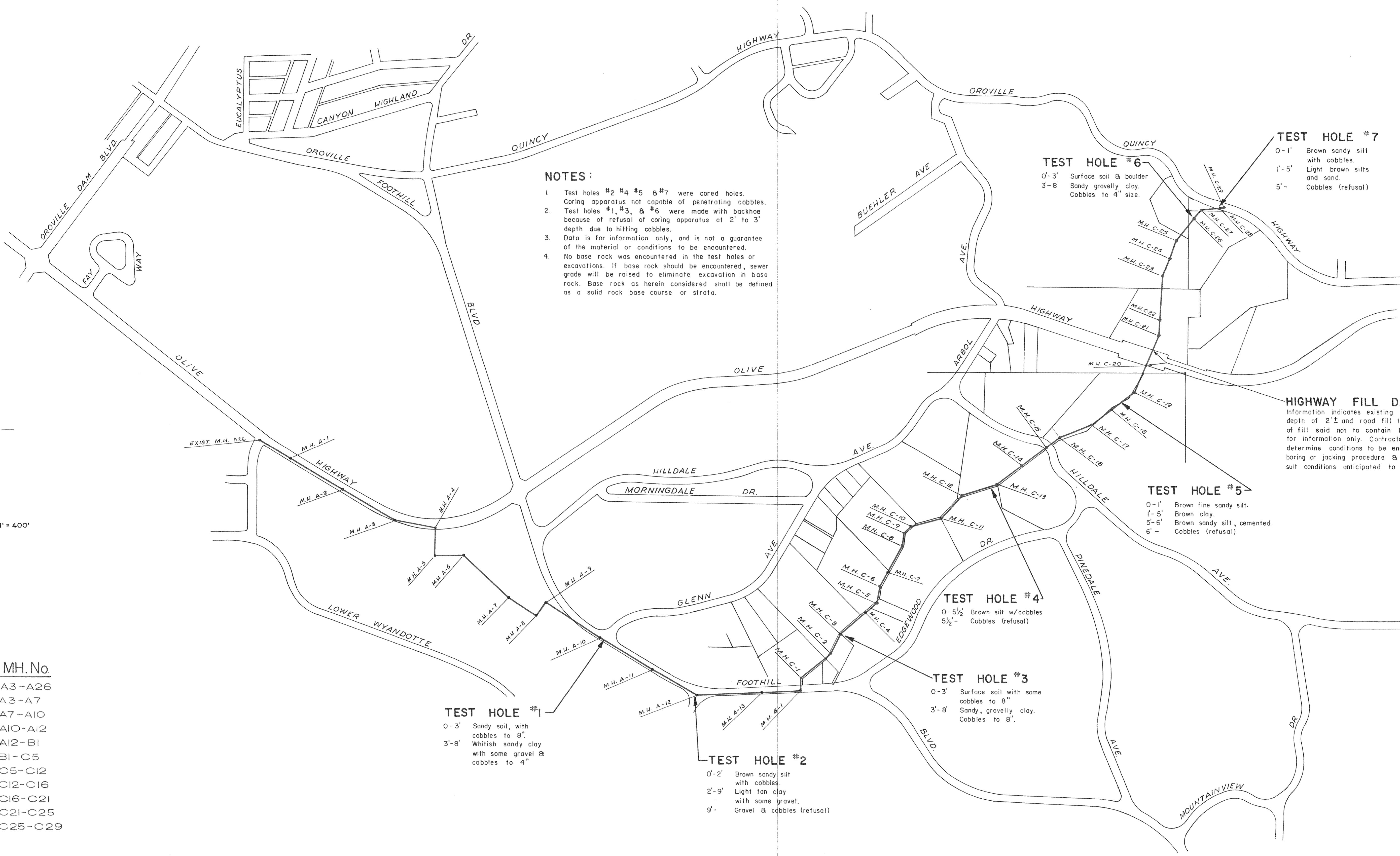
TEST HOLE #3
 0-3' Surface soil with some cobbles to 8"
 3'-8' Sandy, gravelly clay. Cobbles to 8"

TEST HOLE #5
 0-1' Brown fine sandy silt.
 1'-5' Brown clay.
 5'-6' Brown sandy silt, cemented.
 6' - Cobble (refusal)

TEST HOLE #6
 0'-3' Surface soil & boulder
 3'-8' Sandy gravelly clay. Cobbles to 4" size.

TEST HOLE #7
 0-1' Brown sandy silt with cobbles.
 1'-5' Light brown silts and sand.
 5'- Cobble (refusal)

HIGHWAY FILL DATA
 Information indicates existing soil was removed to depth of 2'± and road fill then made. Lower layers of fill said not to contain larger rocks. This data for information only. Contractor shall be responsible to determine conditions to be encountered and to select boring or jacking procedure & size conductor pipe to suit conditions anticipated to be encountered.



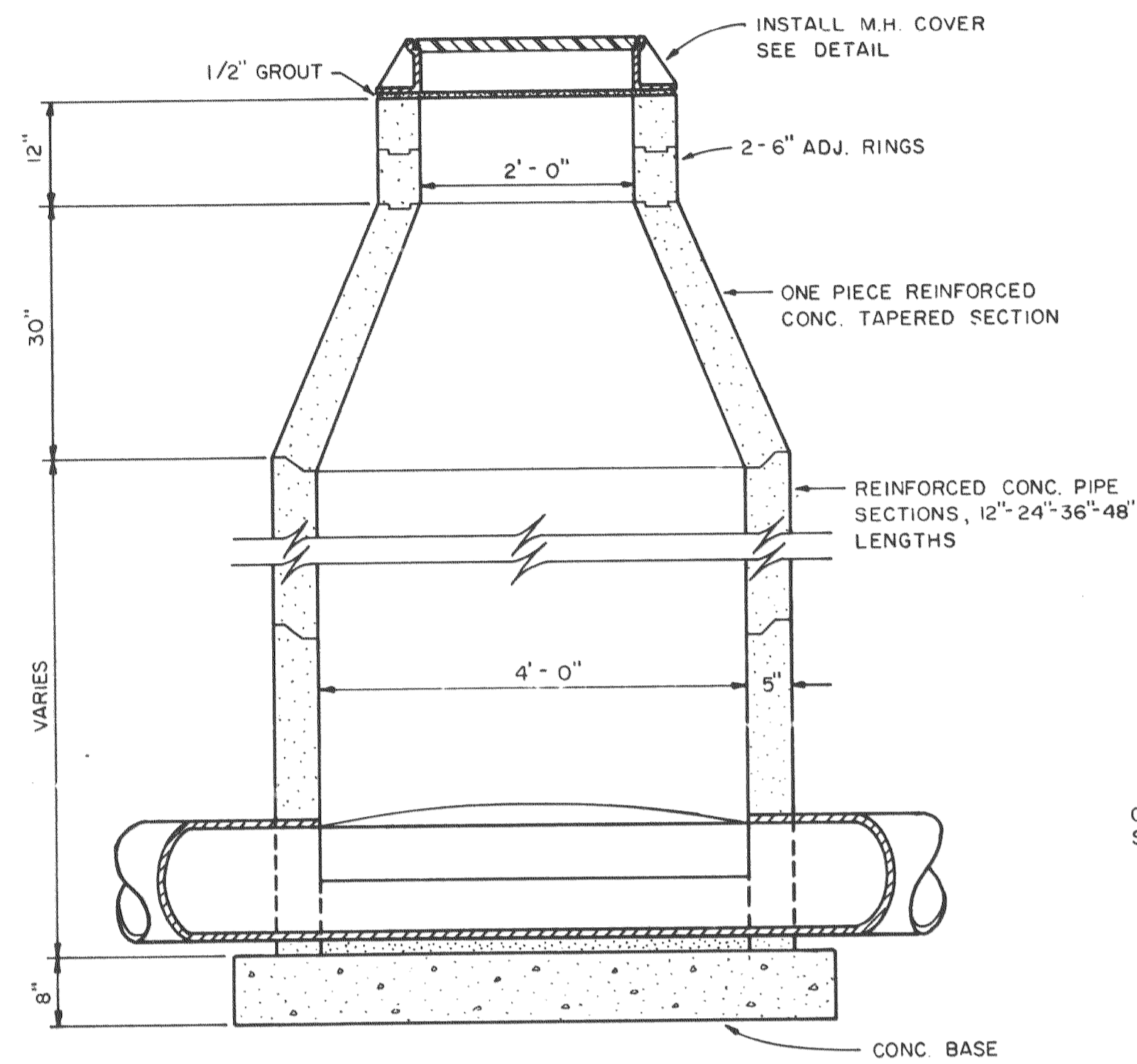
DEWANTE AND STOWELL
 SANITARY AND CIVIL ENGINEERS - SACRAMENTO, CALIFORNIA

REVISION	DATE	DESCRIPTION	BY	APPD.

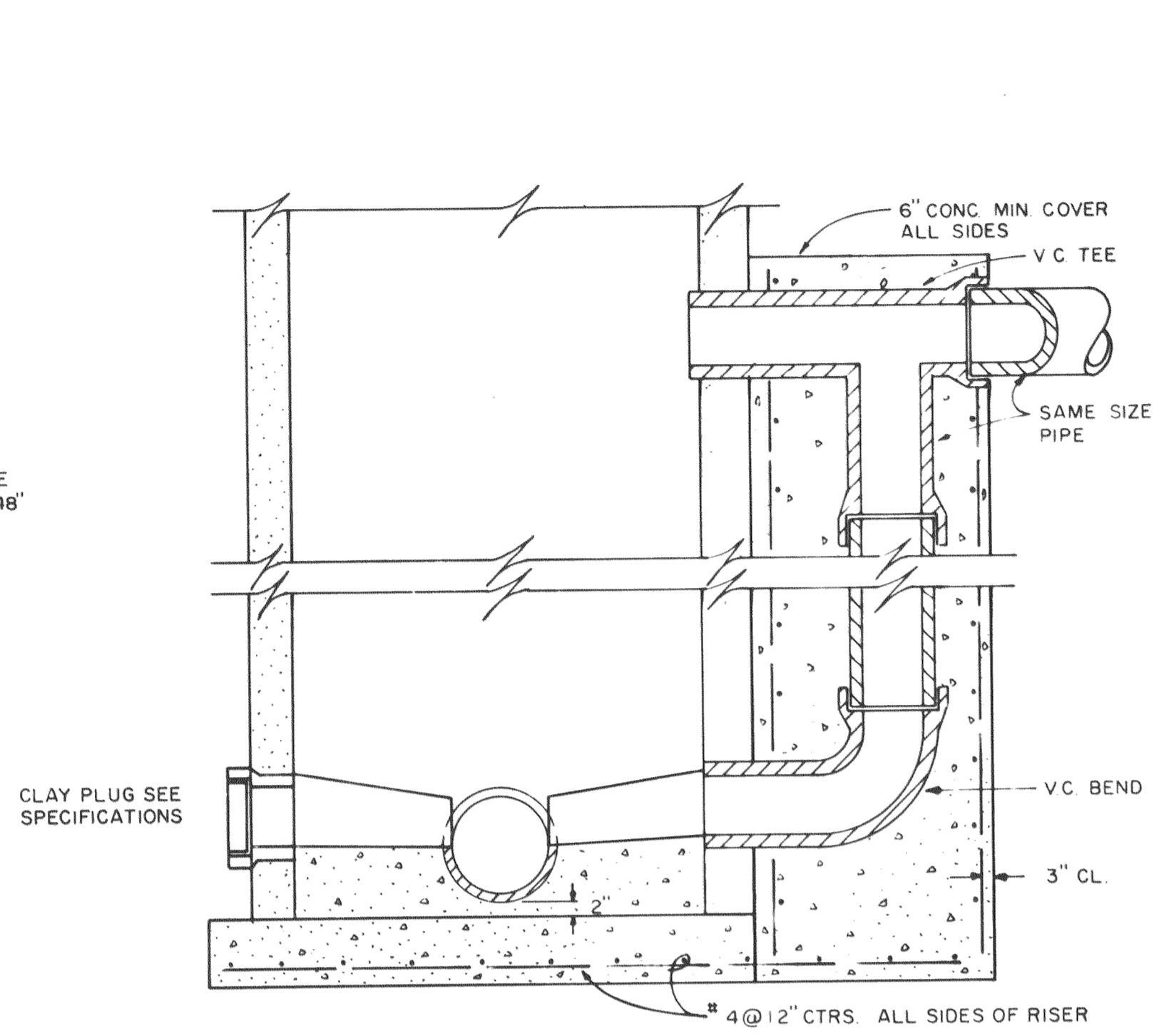
SUBMITTED
[Signature]
 APPROVED
[Signature]

CITY OF OROVILLE
 BUTTE COUNTY, CALIFORNIA
 FOOTHILL BOULEVARD-GLEN DRIVE SEWER MAIN EXTENSION
GENERAL MAP & TEST HOLE DATA

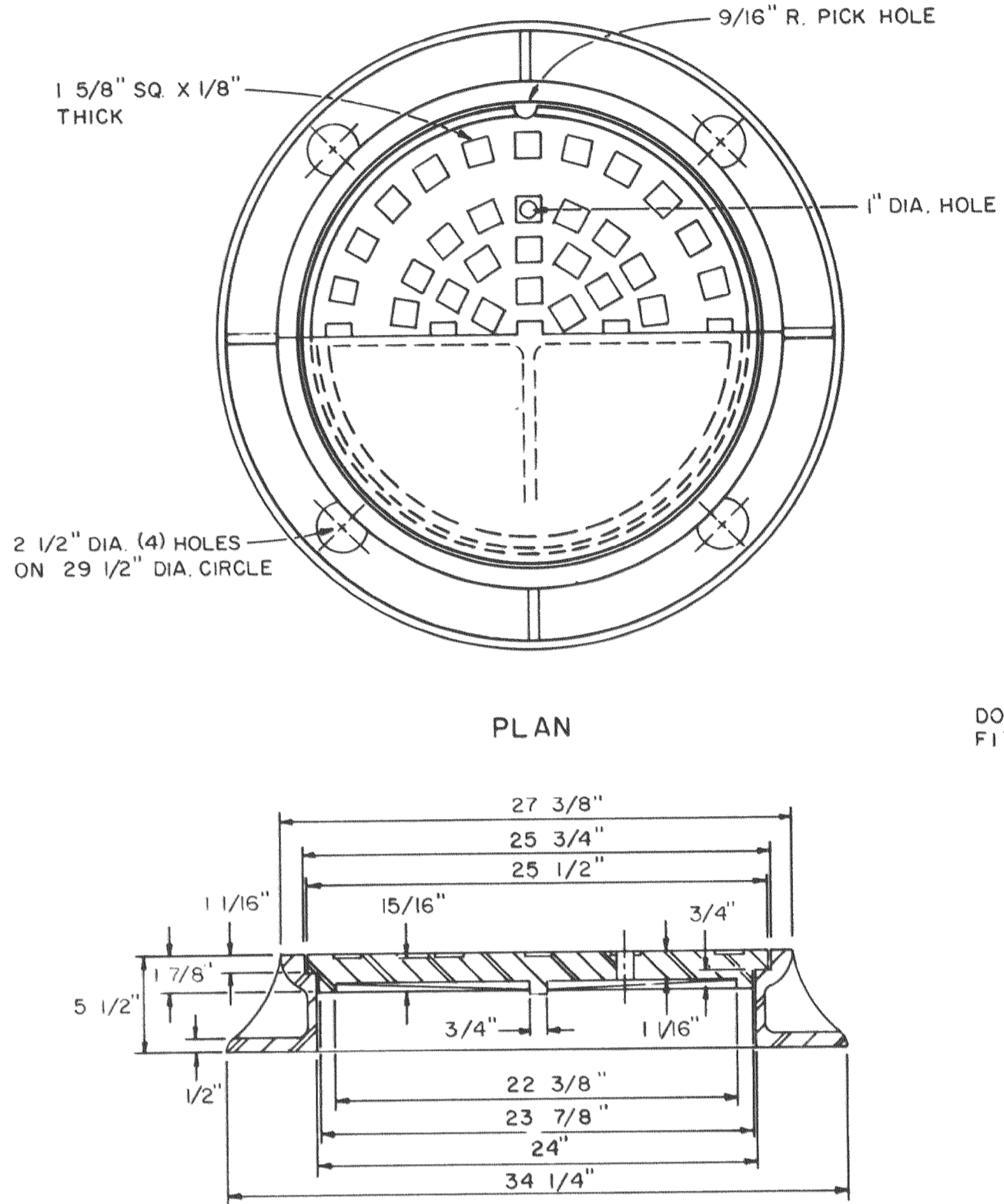
DATE	SHEET NO.
July 26, 1962	2
CHKD.	DRWN.
E.R.S.	R.A.B.
OF 14	



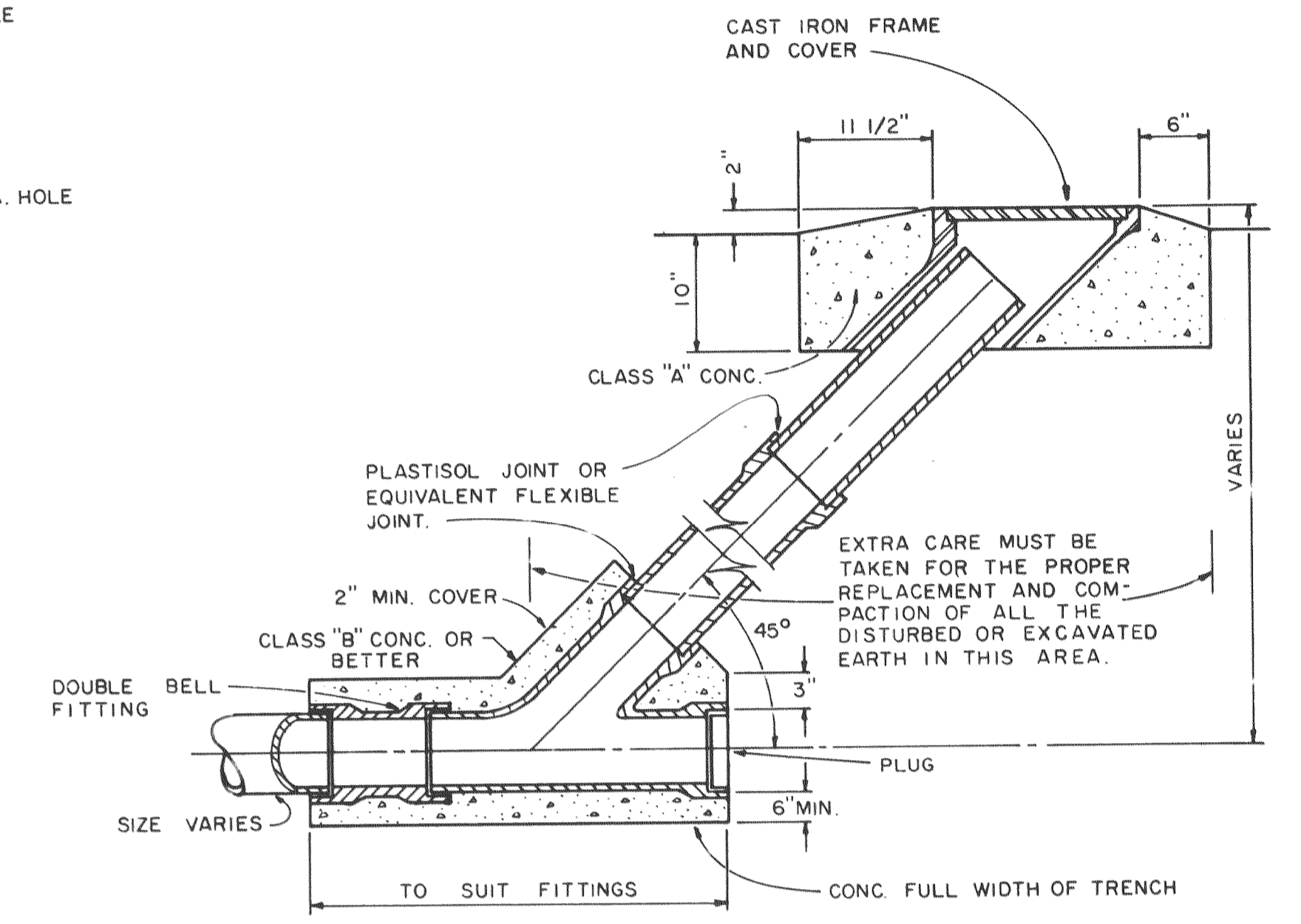
STANDARD PRECAST MANHOLE
NO SCALE



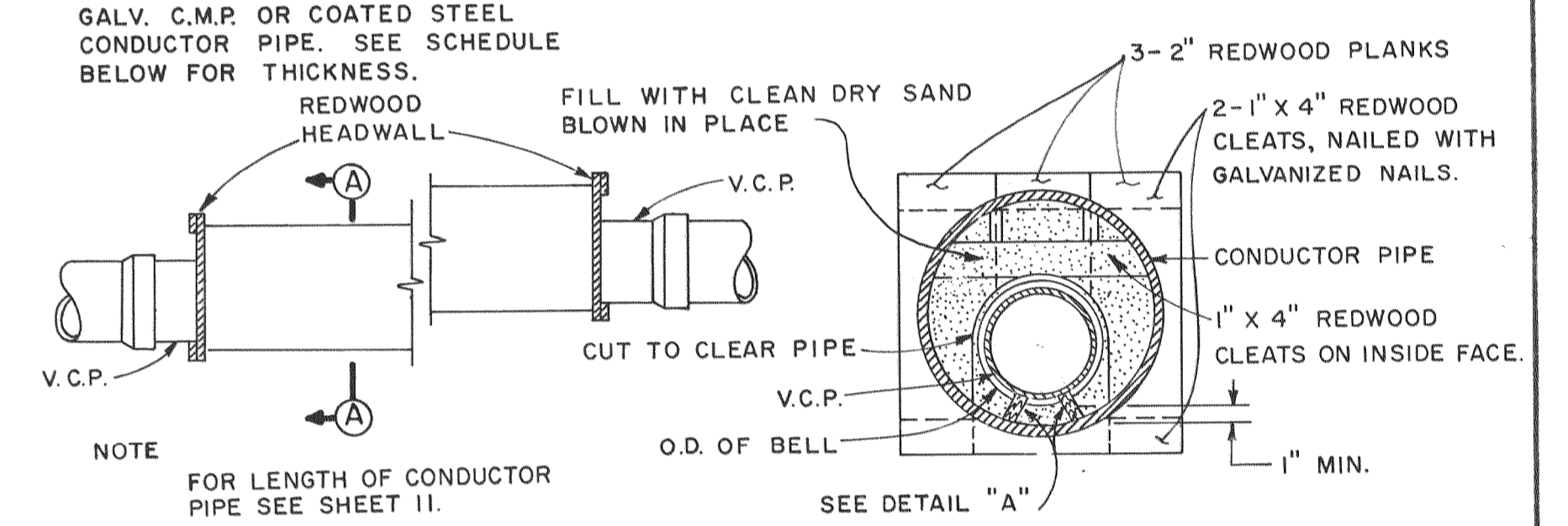
TYPICAL STUB & PRECAST MANHOLE
NO SCALE



MANHOLE FRAME & COVER
NO SCALE

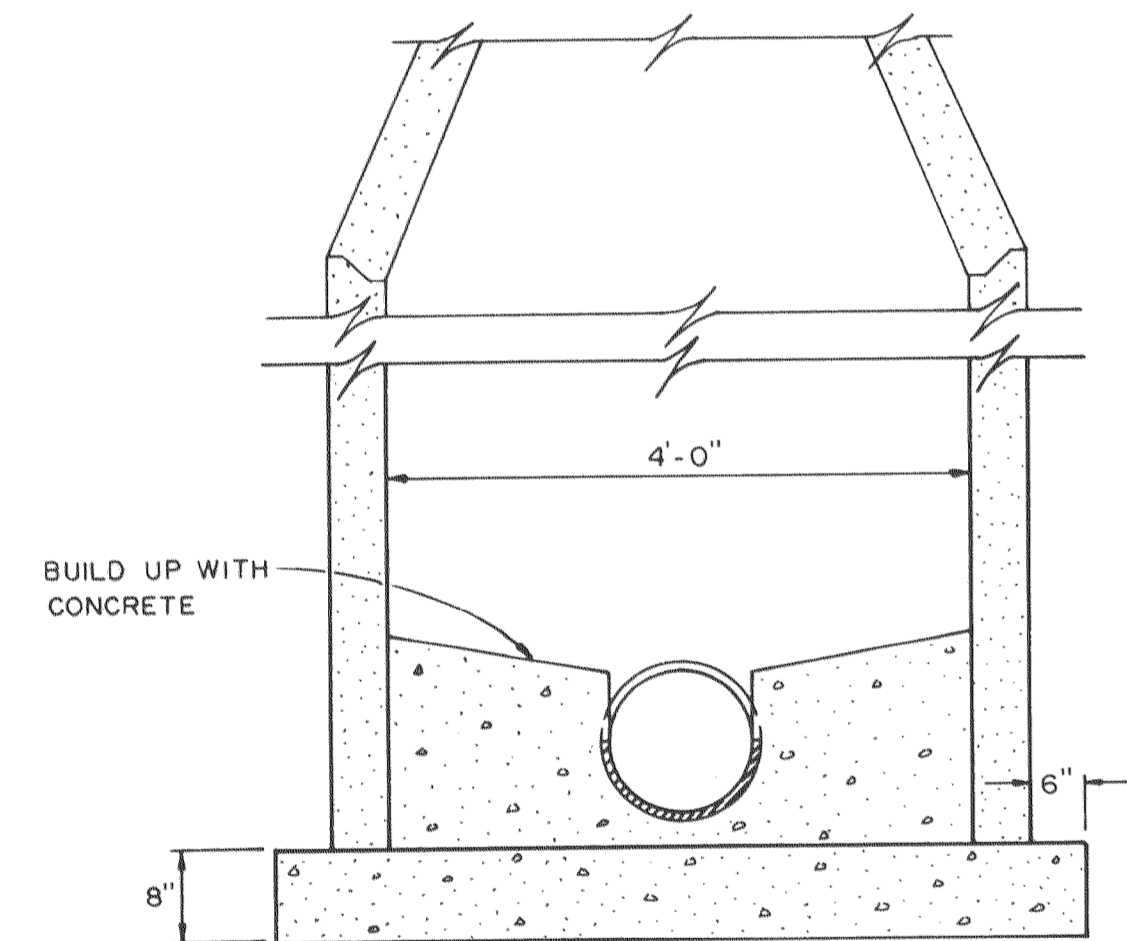


FLUSHING BRANCH
NO SCALE

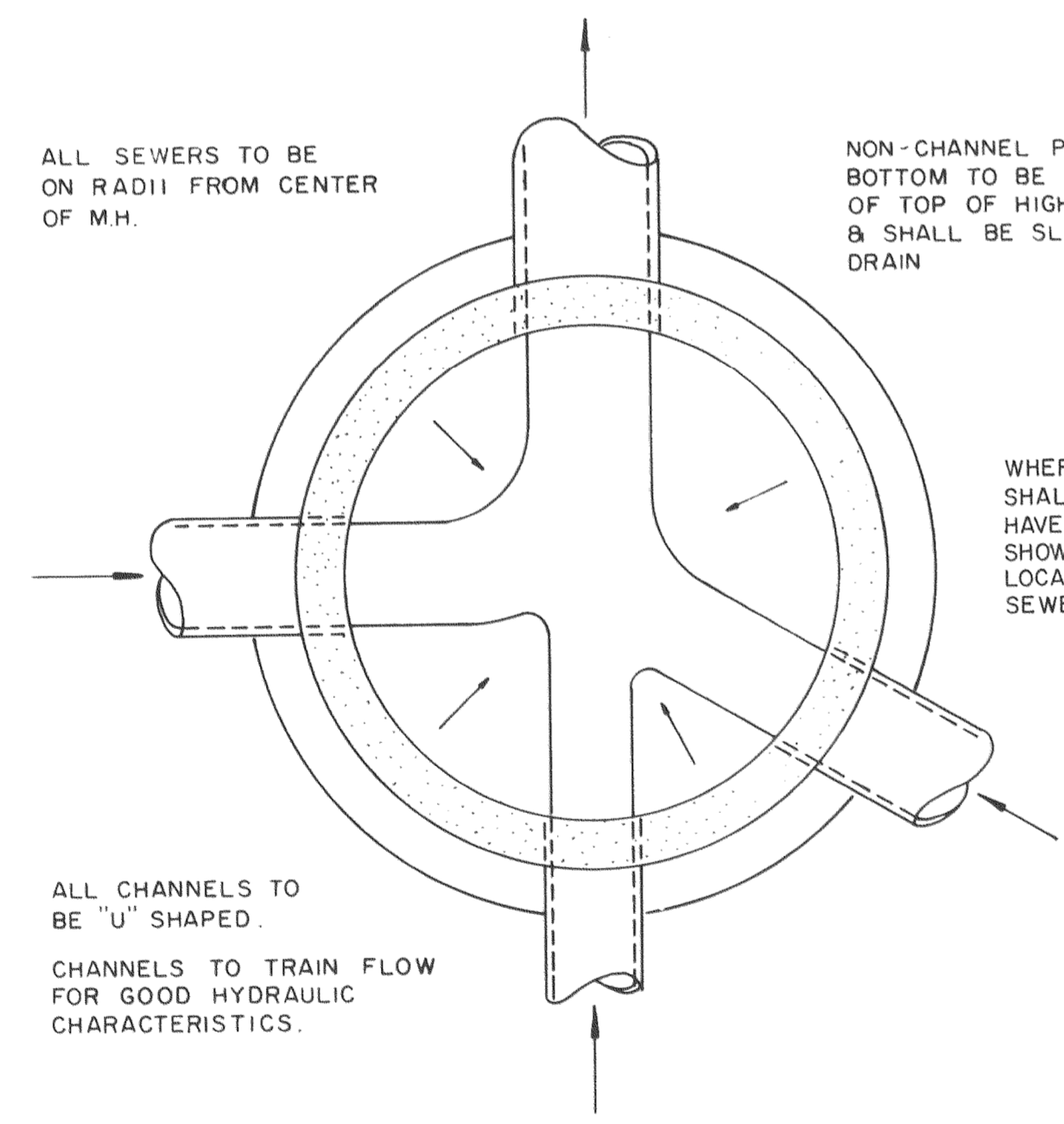


CONDUCTOR PIPE
NO SCALE

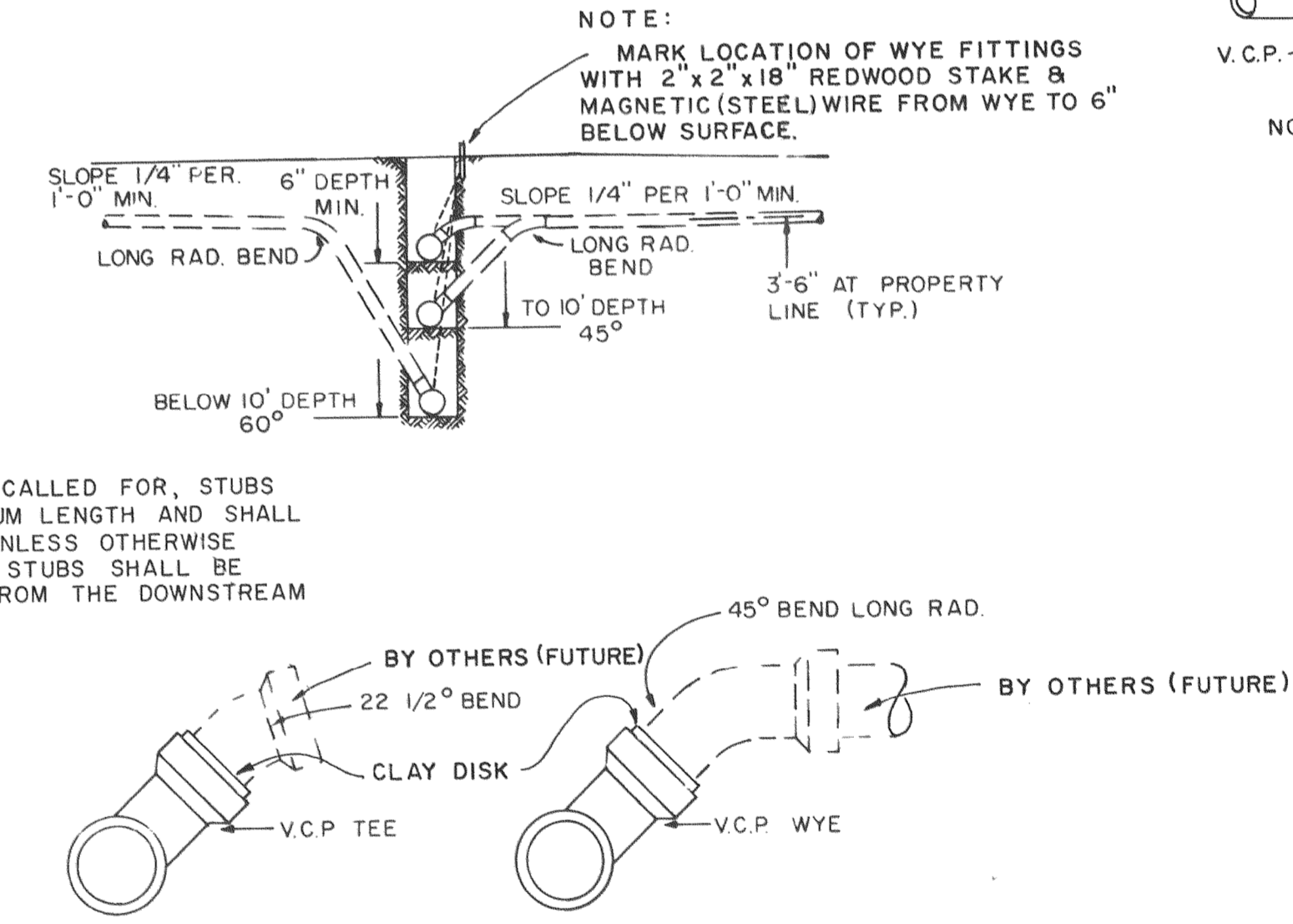
SECTION A
NO SCALE



TYPICAL MANHOLE BASE SECTION
NO SCALE



COMPOSITE MANHOLE BOTTOM
NO SCALE



LATERAL SETTING DETAIL
NO SCALE

CONDUCTOR PIPE THICKNESS SCHEDULE		
SIZE	GALV. C.M.P.	ASPHALT COATED STEEL
18"	10 Gauge	1/4"
21"	10 Gauge	1/4"
24"	10 Gauge	1/4"
27"	8 Gauge	3/16"
30"	8 Gauge	3/16"
36"	8 Gauge	3/16"

DETAIL "A"
NO SCALE

TWO WOODEN SKIDS 1'-0" LONG, EACH LENGTH V.C.P. SKIDS TO BE OF SIZE SUCH THAT BELL CLEARS CONDUCTOR. SKID HEIGHT NOT TO BE MORE THAN 50% MORE THAN WIDTH. SKID TO BE SECURED TO PIPE BY STRAP, EACH END. GROOVE SKIDS FOR STRAP CLEARANCE.

DEWANTE AND STOWELL
SANITARY AND CIVIL ENGINEERS - SACRAMENTO, CALIFORNIA

REVISION	DATE	DESCRIPTION	BY	APPD.

SUBMITTED
Edwin R. Stowell
APPROVED
Harold Cooper

CITY OF OROVILLE
OROVILLE, CALIFORNIA
FOOTHILL BOULEVARD - GLEN DRIVE SEWER MAIN EXTENSION
MISCELLANEOUS DETAILS

DATE		SHEET NO.
July 26, 1962		14
CHKD	DRWN	
E.R.S.	RE.J.	OF 14