



Scale: 1" = 200'

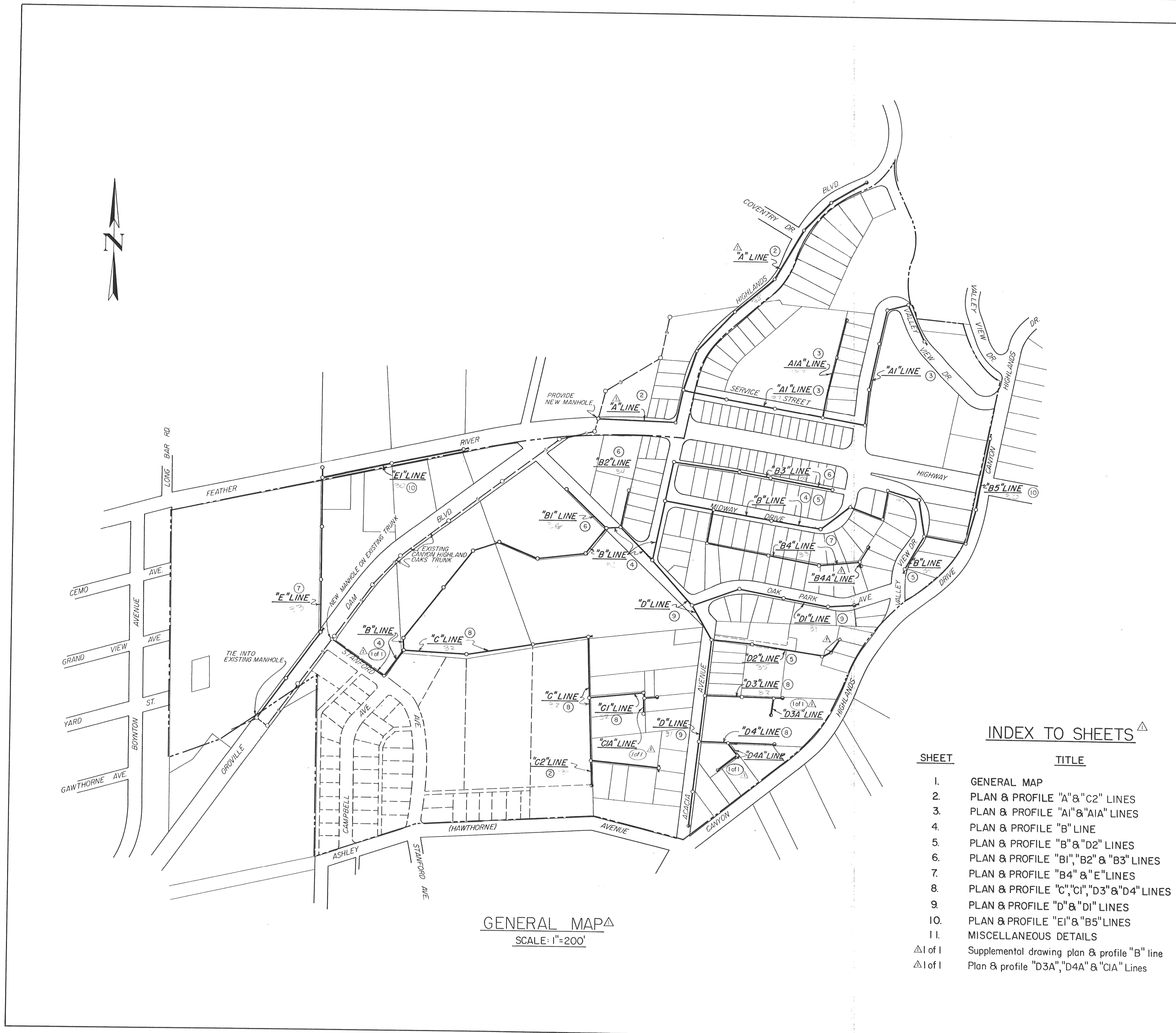


Note: This drawing supplements contract drawings dated March, 1959.

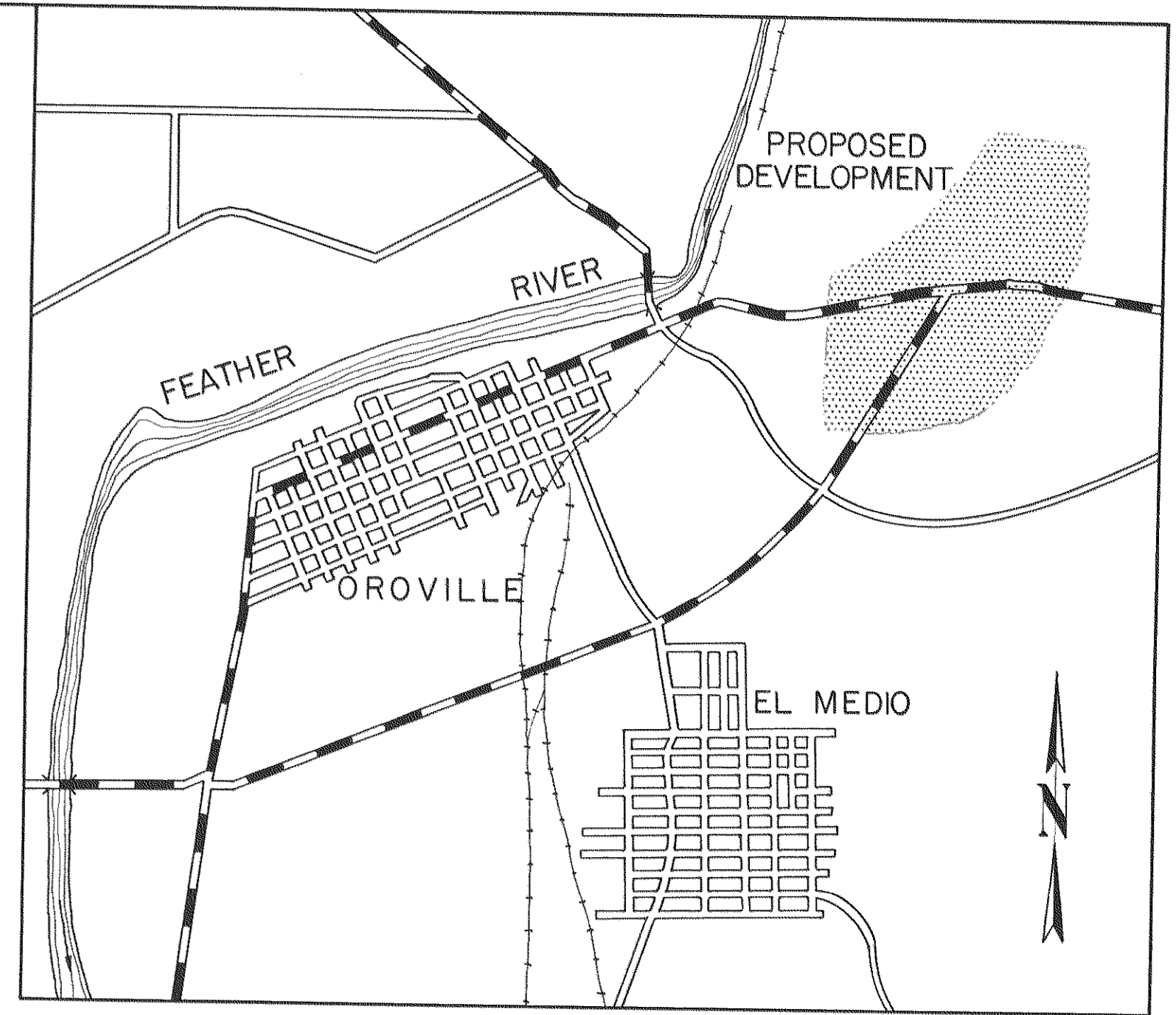
NOTE: Service connections to be installed under sewerage project shown hereon as to general location only. Exact location shall suit wye location as established in field. Service connections are to be provided in streets from sewer main to property line.

Scale: 1" = 200'

FEATHER PORTALS ASSESSMENT DISTRICT OROVILLE, CALIFORNIA	
SERVICE CONNECTIONS	
DEWANTE & STOWELL SANITARY & CIVIL ENGINEERS, SACRAMENTO, CALIFORNIA	
DRWN. J.J.	SHEET 1
CHKD ERS	OF 1
JUNE 1959	



GENERAL MAP
SCALE: 1"=200'



VICINITY MAP
SCALE IN FEET
0 1000 2000 3000 4000 5000 6000

- LEGEND**
- R/W line
 - Water line
 - Gas line
 - Manhole
 - Lamphole
 - E.P. Edge of pavement
 - Culvert
 - Stream
 - Tree
 - Underground cable
 - X—X Fence
 - Existing sewer

- NOTES:**
1. (3) Denotes sheets on which plan & profile are shown.
 2. All elevations shown on profiles are City of Oroville datum.
 3. Depth to underground utilities shown in profile are approx. only unless elev. indicated.
 4. All stubs to be 6" VC, 10' long. Provide clay plug set in place as specified.
 5. Top of manhole frames and covers in paved areas or streets to be set flush with paving or finished grade, otherwise set tops 3" over grade and slope backfill from top to grade.

INDEX TO SHEETS

SHEET	TITLE
1.	GENERAL MAP
2.	PLAN & PROFILE "A" & "C2" LINES
3.	PLAN & PROFILE "A1" & "A1A" LINES
4.	PLAN & PROFILE "B" LINE
5.	PLAN & PROFILE "B" & "D2" LINES
6.	PLAN & PROFILE "B1", "B2" & "B3" LINES
7.	PLAN & PROFILE "B4" & "E" LINES
8.	PLAN & PROFILE "C", "C1", "D3" & "D4" LINES
9.	PLAN & PROFILE "D" & "D1" LINES
10.	PLAN & PROFILE "E1" & "B5" LINES
11.	MISCELLANEOUS DETAILS
△1 of 1	Supplemental drawing plan & profile "B" line
△1 of 1	Plan & profile "D3A", "D4A" & "C1A" Lines

AS BUILT

AB 11-13-59	Revised General Map & Index to Sheets	LRK
REV. DATE	DESCRIPTION	BY APP.
FEATHER PORTALS ASSESSMENT DISTRICT OROVILLE, CALIFORNIA		
SANITARY SEWER SYSTEM GENERAL MAP		
DEWANTE AND STOWELL SANITARY AND CIVIL ENGINEERS - SACRAMENTO, CALIFORNIA		
DRAWN: LRK	SUBMITTED: <i>Edwin B. Stowell</i>	SHEET NO. 1
CHECKED: ERS	APPROVED: <i>[Signature]</i>	OF 11
DATE: March '59		