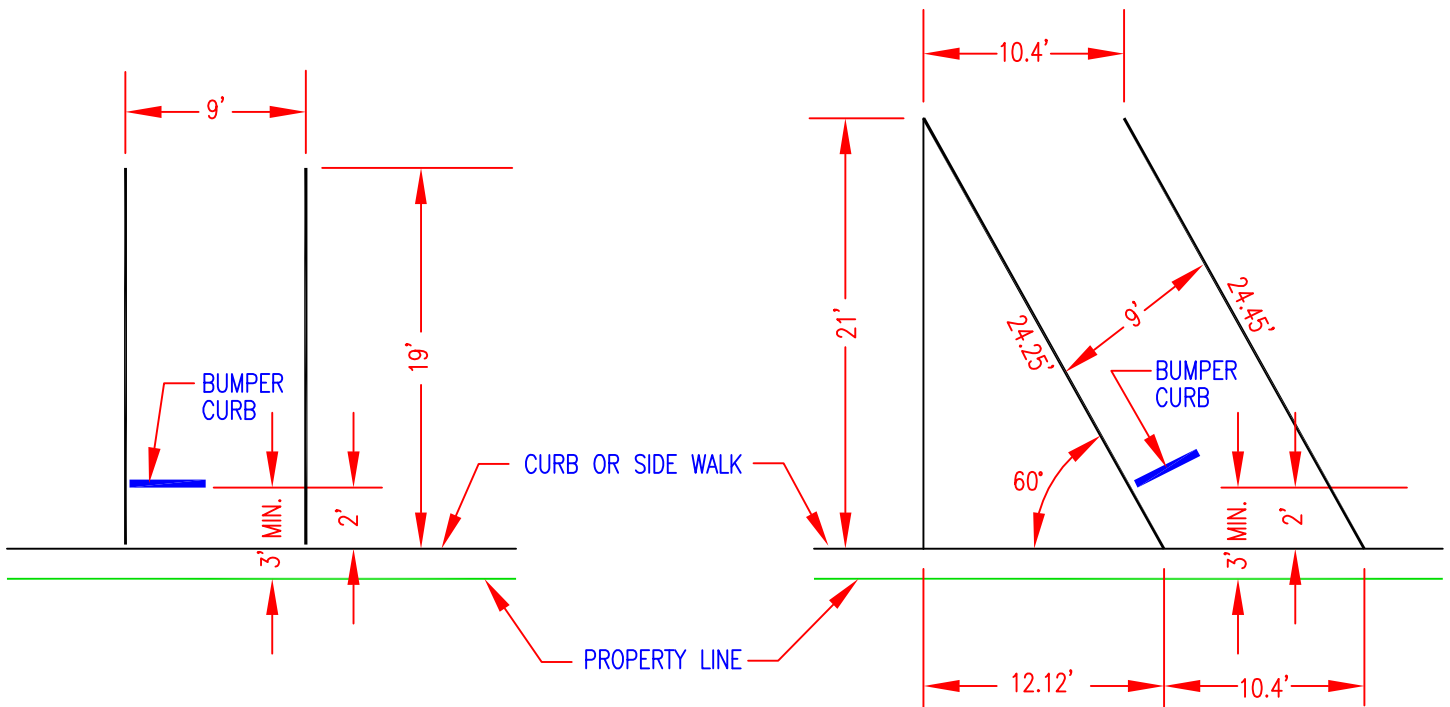
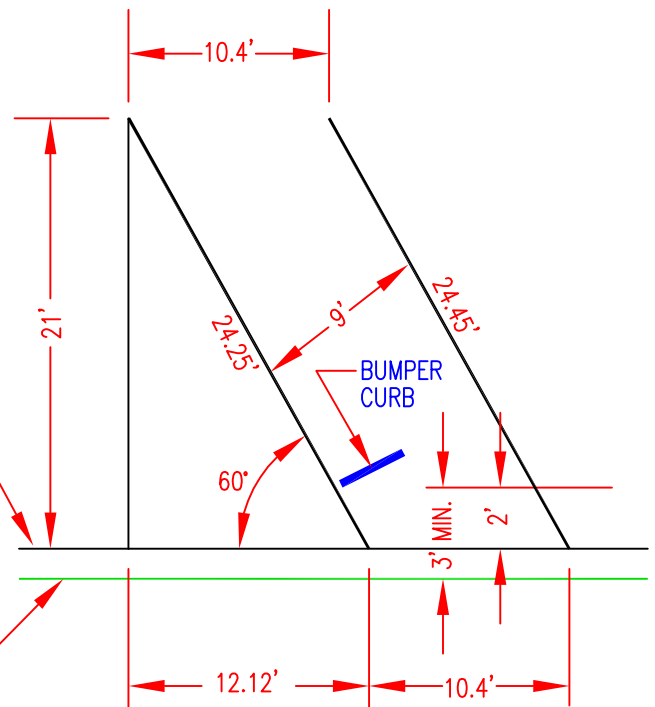


45° PARKING STALL



90° PARKING STALL



60° PARKING STALL



CITY OF OROVILLE
DEPARTMENT OF PUBLIC WORKS

STANDARD FOR
OFF STREET PARKING

DRAWN BY.
SG

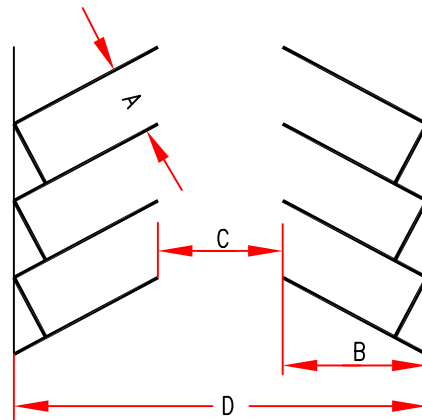
RICK WALLS, P.E.
DIRECTOR OF PUBLIC WORKS DEPARTMENT

SHEET
1 OF 3
MS-02

<u>ANGLE</u>	<u>STALL WIDTH</u> A	<u>STALL TO CURB</u> B	<u> AISLE</u> C	<u>TWO ROWS + AISLE</u> D
90°	9' - 0"	19' - 0"	25' - 0" * *	63' - 0"
60°	9' - 0"	21' - 0"	18' - 6" *	61' - 0"
45°	9' - 0"	19' - 0"	16' - 4" *	56' - 0"

* * TWO-WAY AISLE
* ONE-WAY AISLE

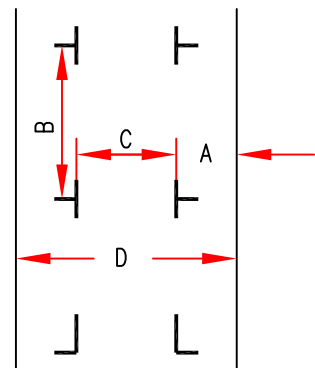
ANGLE PARKING



<u>ANGLE</u>	<u>STALL WIDTH</u> A	<u>STALL TO CURB</u> B	<u> AISLE</u> C	<u>TWO ROWS + AISLE</u> D
90°	9' - 0"	24' - 0"	12' - 0" *	30' - 0"
	9' - 0"	24' - 0"	24' - 6" * *	42' - 0"

* TWO-WAY AISLE
* * ONE-WAY AISLE

PARALLEL PARKING



CITY OF OROVILLE
DEPARTMENT OF PUBLIC WORKS

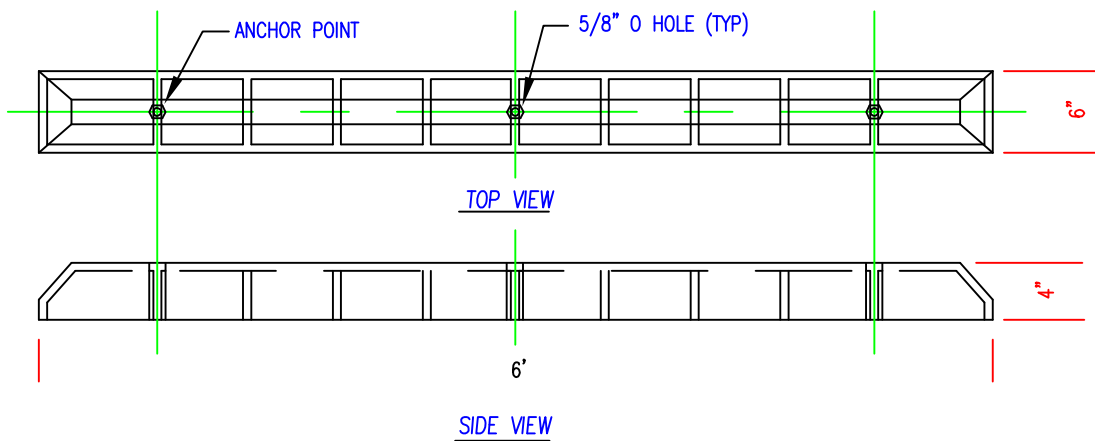
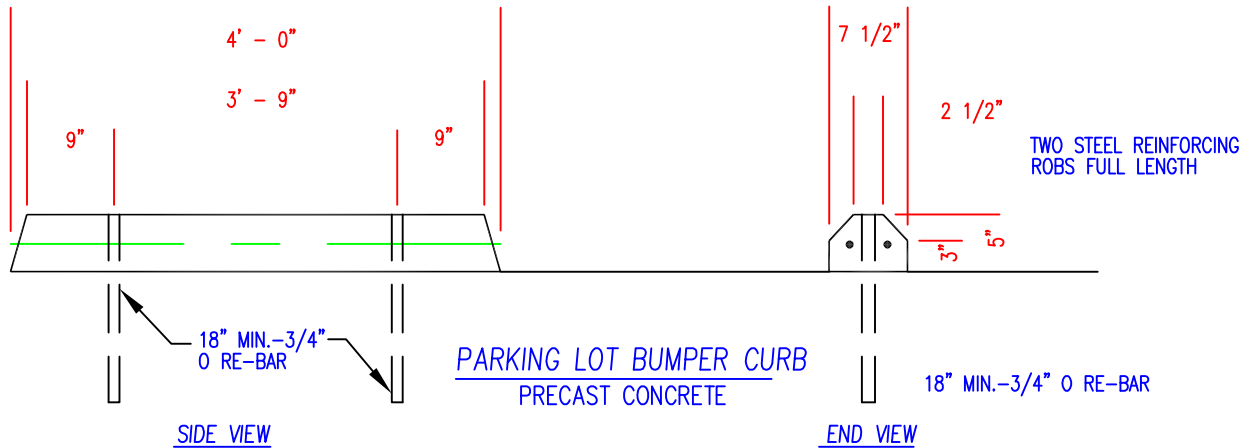
STANDARD FOR
OFF STREET PARKING

DRAWN BY.
SG

RICK WALLS, P.E.
DIRECTOR OF PUBLIC WORKS DEPARTMENT

SHEET
2 OF 3
MS-02

HIGHWAY SAFETY SUPPLY PARKING LOT BUMPER CURB
 PRECAST CONCRETE WITH A 28 DAY - 3,500 LBS
 COMPRESSIVE STRENGTH OR EQUAL.



NOTES:

1. USE TRAFFIC-RATED WHITE PAINT TO DELINEATE PARKING STALLS. MINIMUM WIDTH OF STRIPE SHALL BE 4 INCHES.
2. PARKING AISLES SHALL BE AT LEAST 20 FEET IN WIDTH IF THEY ARE DESIGNATED "FIRE LANES" BY THE CITY OF OROVILLE FIRE DEPARTMENT.
3. HANDICAPPED SPACES SHALL BE PROVIDED PER STATE BUILDING CODE REQUIREMENTS.
4. ADDITIONAL PARKING INFORMATION IS REFERENCED IN SECTION 26-49 IN THE CITY OF OROVILLE ZONING ORDINANCE.
5. PLASTIC PARKING BUMPER SHALL BE "POLY-STOP C" AS MANUFACTURED BY PRESTO PRODUCTS COMPANY OR APPROVED EQUAL.
6. ANCHORING REQUIREMENTS SHALL BE PER MANUFACTURER'S RECOMMENDATIONS AND AS APPROVED BY THE ENGINEER.



CITY OF OROVILLE
 DEPARTMENT OF PUBLIC WORKS

STANDARD FOR
 OFF STREET PARKING

DRAWN BY.
 SG

RICK WALLS, P.E.
 DIRECTOR OF PUBLIC WORKS DEPARTMENT

SHEET
 3 OF 3
 MS-02