

NOTES:

1. PRECAST MODIFIED G - O DROP INLET AS SUPPLIED BY COOK CONCRETE PROJECTS OR APPROVED EQUAL.
2. GRATE AND FRAME TO BE METAL WORKS 2413 GALVANIZED OR APPROVED EQUAL.
3. BASE TO BE SHOWN ON STANDARD SD-02, BASE MAY BE PRECAST.
4. D.I. SHALL BE INSTALLED AT THE SAME GRADE AS THE SIDEWALK.
5. ALL PIPES AND JOINTS SHALL BE GROUTED FROM THE INSIDE TO PROVIDE A SMOOTH SURFACE AFTER SETTING TO GRADE.
6. A 1' CONCRETE COLLAR SHALL ENCOMPASS THE PIPE BOTH HORIZONTALLY AND VERTICALLY OUTSIDE THE G.O. BOX.



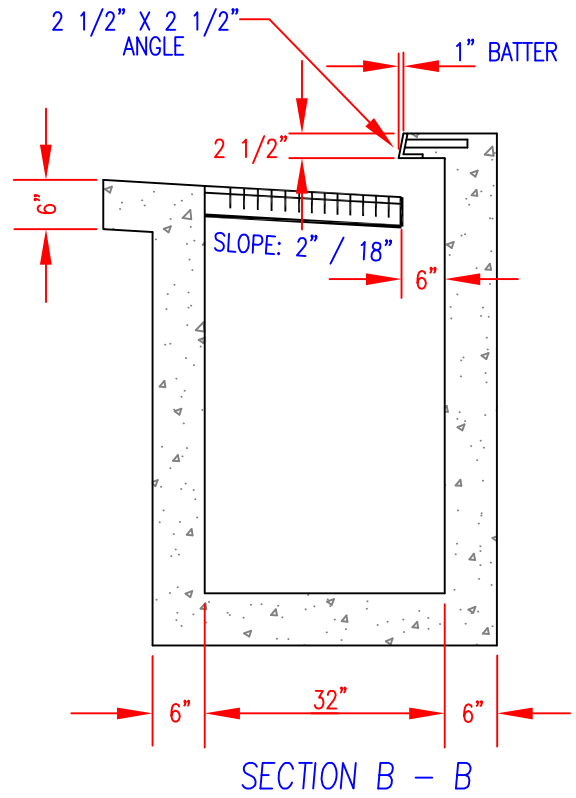
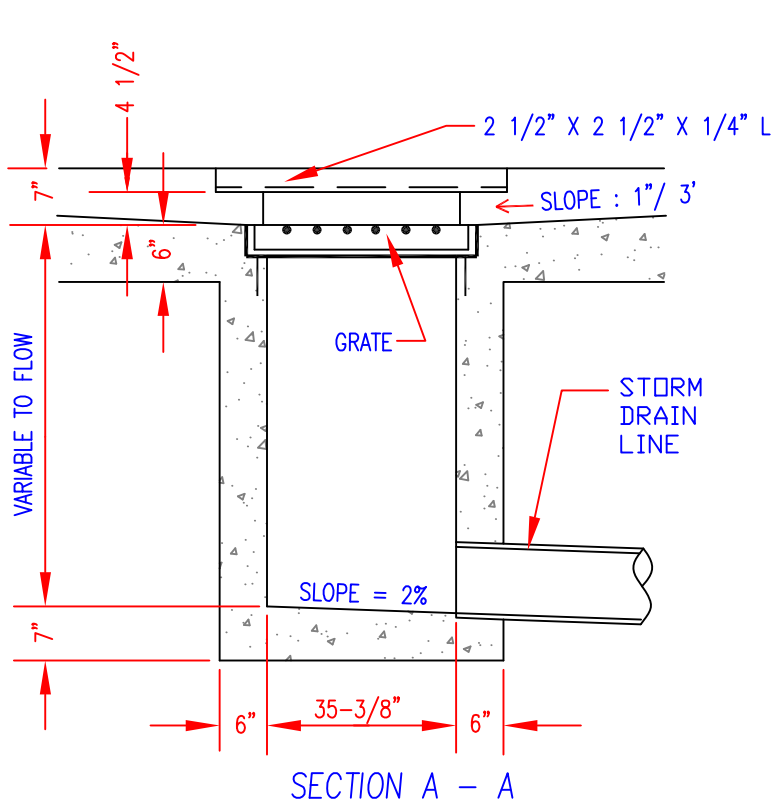
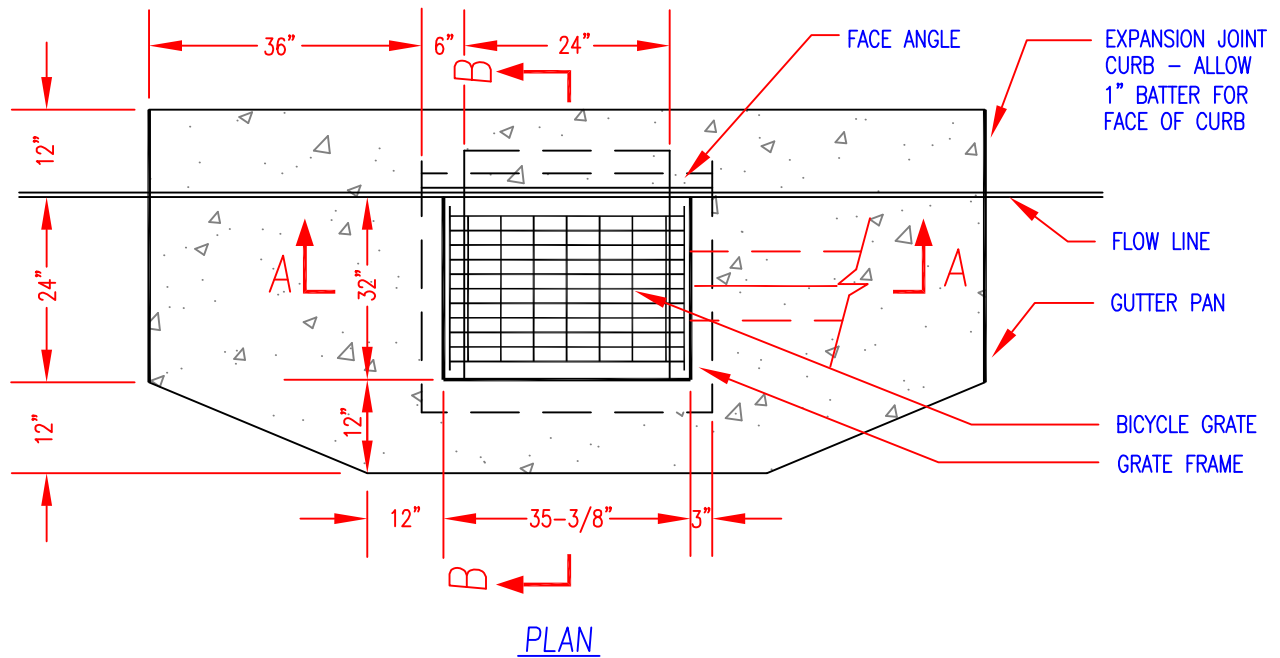
CITY OF OROVILLE
DEPARTMENT OF PUBLIC WORKS

STANDARD FOR
STORM DRAIN DROP INLET

DRAWN BY.
SG

RICK WALLS, P.E.
DIRECTOR OF PUBLIC WORKS DEPARTMENT

SHEET
1 OF 2
SD-02



NOTES:

1. GRATE AND FRAME TO BE METAL WORKS 2413 GALVANIZED OR APPROVED EQUAL.
2. GRATE SHALL BE PROVIDED WITH A SUPPORT BRACKET ON ALL 4 SIDES.



CITY OF OROVILLE
DEPARTMENT OF PUBLIC WORKS

STANDARD FOR
STORM DRAIN DROP INLET

DRAWN BY.
SG

RICK WALLS, P.E.
DIRECTOR OF PUBLIC WORKS DEPARTMENT

SHEET
2 OF 2
SD-02