

STORM DRAIN MANHOLE DETAIL

NOTES:

1. MANHOLE RIM ELEVATION TO BE DETERMINED IN THE FIELD.
2. TOP OF MANHOLE TO BE FITTED WITH STANDARD SD-04 OR SD-05 ASSEMBLY.
3. CHANNEL BASE TO BE SMOOTH TROWELLED WITH STREAMLINED JUNCTIONS.
4. USE 5'-0" MANHOLE FOR STORM DRAINS 48" TO 60" IN DIAMETER.
5. OUTSIDE OF BASE TO BE A MINIMUM OF 5'-0" SQUARE, BUT MAY ASSUME A SHAPE OTHER THAN A SQUARE PROVIDED THE STANDARD BARREL RESTS AT ALL POINTS UPON THE SURFACE OF THE CONCRETE BASE.
6. MANHOLE BASES ONLY MAY BE CAST IN PLACE. ALL BASES SHALL BE PRECAST.
7. USE BARREL OR RING FORM TEMPLATE TO MAKE AN INDENTATION IN THE Poured-IN-PLACE BASE OR AT THE OPTION OF THE CONTRACTOR, THE FIRST BARREL MAY BE PLACED DIRECTLY IN THE WET BASE AND THE CONCRETE MOUNDED 4 INCHES ABOVE THE JOINT AND PACKED TIGHTLY BOTH INSIDE AND OUTSIDE OF THE BARREL.
8. WHEN MANHOLE IS LOCATED OUTSIDE OF PAVED AREAS, CEMENT GROUT SHALL BE PLACED AROUND CIRCUMFERENCE OF CASTING AND UPPERMOST GRADE RING AS DIRECTED BY THE ENGINEER.
9. FOR STORMDRAIN PIPE GREATER THAN 36" I.D., AN ENGINEERED SUBMITTAL SHALL BE SUBMITTED FOR APPROVAL BY THE ENGINEERING DEPARTMENT. THIS SUBMITTAL SHALL BE ADDED TO THE IMPROVEMENT PLANS.



CITY OF OROVILLE
DEPARTMENT OF PUBLIC WORKS

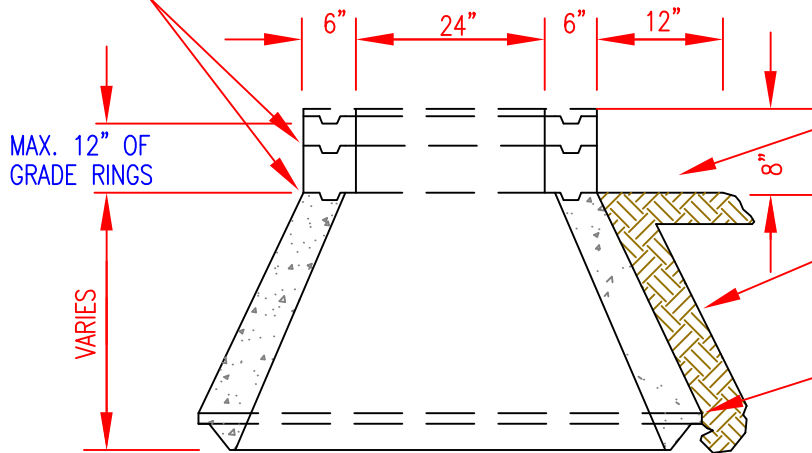
STANDARD FOR
STORM DRAIN MANHOLE

DRAWN BY.
SG

RICK WALLS, P.E.
DIRECTOR OF PUBLIC WORKS DEPARTMENT

SHEET
1 OF 3
SD-03

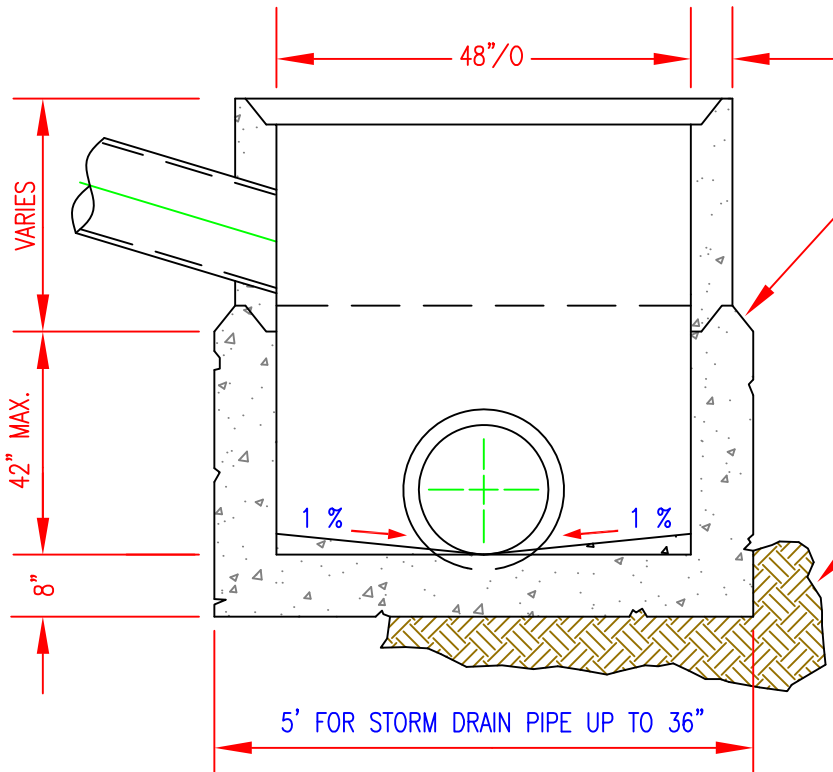
COMPRESS "RAMNEK" WELL AT ALL GRADE RING JOINTS TO PREVENT FUTURE SETTLEMENT.



PLACE 12" WIDE BY 8" DEEP CONCRETE COLLAR AROUND MANHOLE IN ROADWAY (LAMPBLACK CONCRETE).

UNIFORMLY PLACE BACKFILL AROUND MANHOLE. COMPACT TO 95% RELATIVE DENSITY IF PLACED WITHIN RIGHT-OF-WAY.

USE "RAMNEK" OR EQUAL TO FORM WATER RIGHT CONDITION AT ALL KEYED CONNECTIONS.



6" MINIMUM IN-PLACE

THE BASE SHALL BE CAST IN A SINGLE POUR. ALL CONCRETE USED SHALL HAVE A MINIMUM 28 DAYS COMPRESSIVE STRENGTH OF 3000 PSI AND A SLUMP OF 2 INCHES.

UNDISTURBED GROUND OR SELECT IMPORT. COMPACT TO 95% RELATIVE DENSITY.

STORM DRAIN MANHOLE DETAIL
SECTION AA



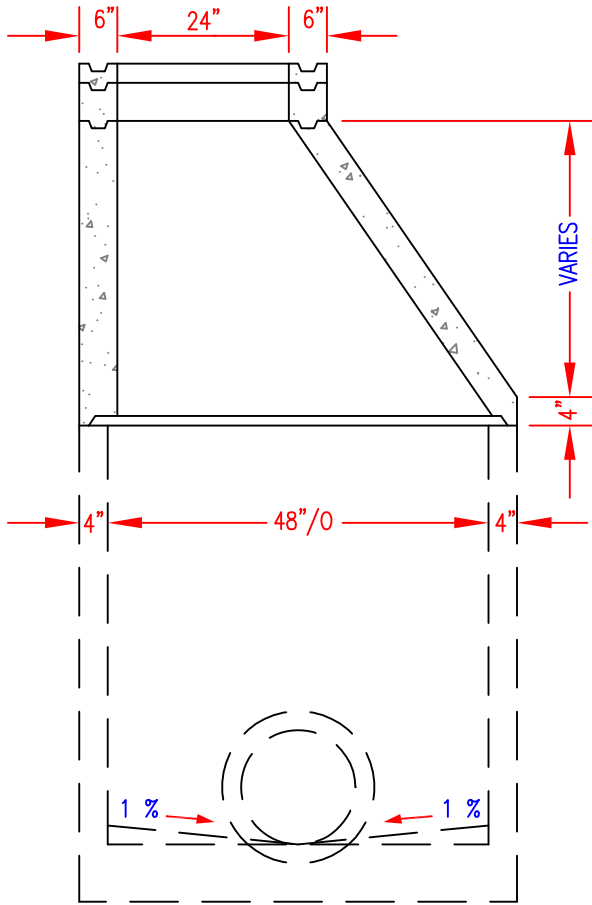
CITY OF OROVILLE
DEPARTMENT OF PUBLIC WORKS

STANDARD FOR
STORM DRAIN MANHOLE

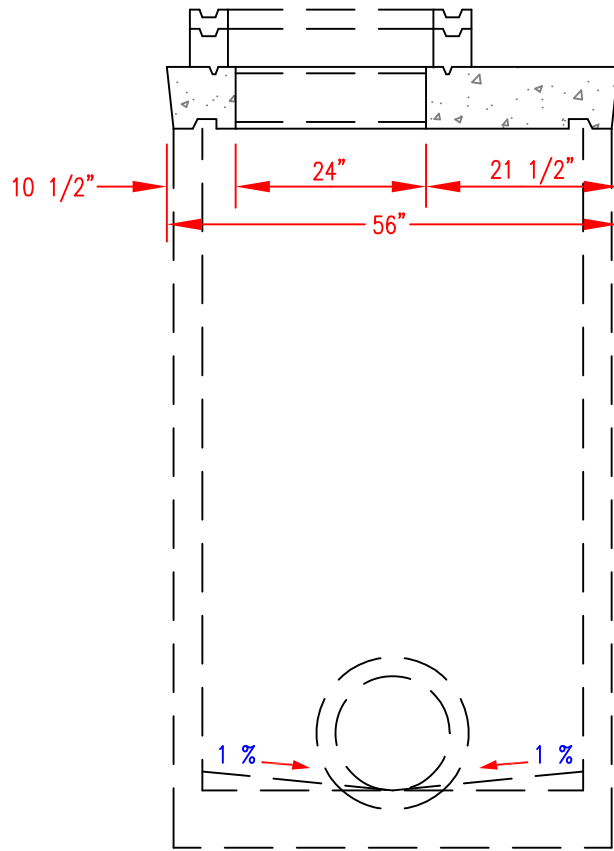
DRAWN BY.
SG

RICK WALLS, P.E.
DIRECTOR OF PUBLIC WORKS DEPARTMENT

SHEET
2 OF 3
SD-03



OPTION ECCENTRIC CONE SECTION



OPTION FLAT LID SECTION



CITY OF OROVILLE
DEPARTMENT OF PUBLIC WORKS

STANDARD FOR
STORM DRAIN MANHOLE

DRAWN BY.
SG

RICK WALLS, P.E.
DIRECTOR OF PUBLIC WORKS DEPARTMENT

SHEET
3 OF 3
SD-03