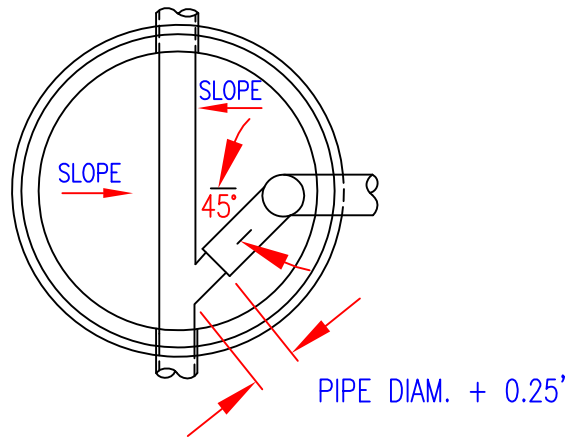
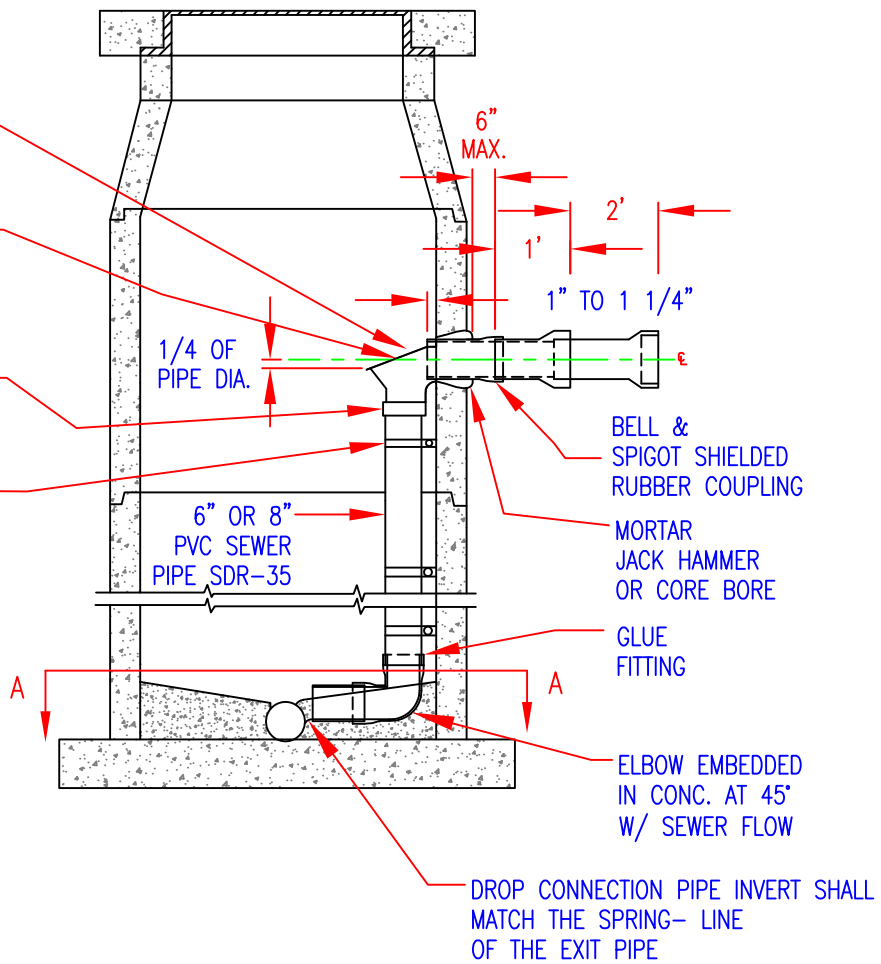


REVERSE TO INVERTED 'T'

RELINER INSIDE DROP BOWL SECURE WITH 4 STAINLESS STEEL BOLTS

CI/PVC CAULDER COUPLING OR APPROVED EQUAL

RELINER STAINLESS STEEL STRAPS OR APPROVED EQUAL. SECURE TO STRUCTURE WITH 2 STAINLESS STEEL BOLTS. STRAP AT 4' INTERVALS (MIN OF 2); REFER TO SS-05



SECTION A-A
PLAN



CITY OF OROVILLE DEPARTMENT OF PUBLIC WORKS		
STANDARD FOR INSIDE GRAVITY DROP CONNECTION		
DRAWN BY. SG	RICK WALLS, P.E. DIRECTOR OF PUBLIC WORKS DEPARTMENT	SHEET 1 OF 2 SS-04

NOTES:

1. CREATING A HOLE IN THE MANHOLE WALL SHALL BE BY CORE BORE OR JACK HAMMER REQUIRING THE OUTSIDE DIAMETER BE PRE DRILLED NO MORE THAN 1" APART AT LEAST TO SPRING LINE OF NEW PIPE LOCATION, THEN ABOUT 2" APART ON THE TOP. EITHER METHOD MUST INSURE MANHOLE INTEGRITY. SEAL BOTH INSIDE AND OUTSIDE WITH MORTAR.
2. ALL INSIDE DROP CONNECTIONS SHALL USE THE DROP BOWL AS PRODUCED BY RELINER-DURAN, INC.
3. SECURE DROP PIPE TO MANHOLE WALL WITH RELINER-DURAN, INC STAINLESS STEEL ADJUSTABLE CLAMPING BRACKETS OR APPROVED EQUAL.



CITY OF OROVILLE
DEPARTMENT OF PUBLIC WORKS

STANDARD FOR
INSIDE GRAVITY DROP CONNECTION
GENERAL NOTES

DRAWN BY.
SG

RICK WALLS, P.E.
DIRECTOR OF PUBLIC WORKS DEPARTMENT

SHEET
2 OF 2
SS-04