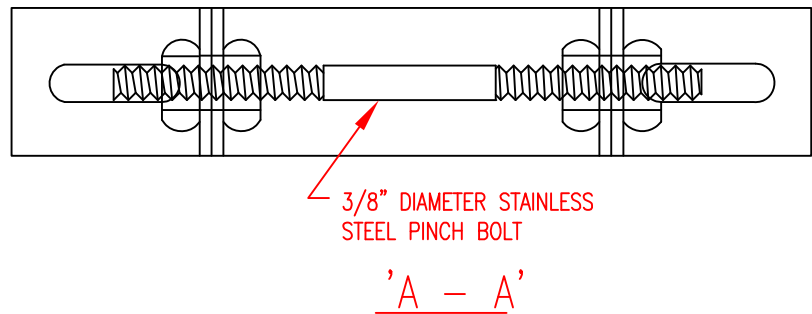


STAINLESS STEEL ADJUSTABLE
CLAMPING BRACKET AS
MANUFACTURED BY RELINER-DURAN,
INC. OR APPROVED EQUAL.



SPECIFICATIONS:

1. CLAMP AND BRACKETS IS TYPE 304 STAINLESS STEEL,
11 GAUGE (.1196")
2. 3/8" DIAMETER PINCH BOLT AND NUTS IS TYPE 18-8
STAINLESS STEEL.
3. STANDARD SIZES TO FIT 6", 8", & 10" PVC SEWER PIPE
SDR-26 AND 4" ABS.
4. LIBERALLY COAT ALL THREADS WITH ANTI-SEIZE.



CITY OF OROVILLE DEPARTMENT OF PUBLIC WORKS		
STANDARD FOR STAINLESS STEEL ADJUSTABLE CLAMPING BRACKETS		
DRAWN BY. SG	<u>RICK WALLS, P.E.</u> DIRECTOR OF PUBLIC WORKS DEPARTMENT	SHEET 1 OF 1 SS-05