

Figure 7.11
PROJECT 2E
SANITARY SEWER MASTER PLAN
CITY OF OROVILLE



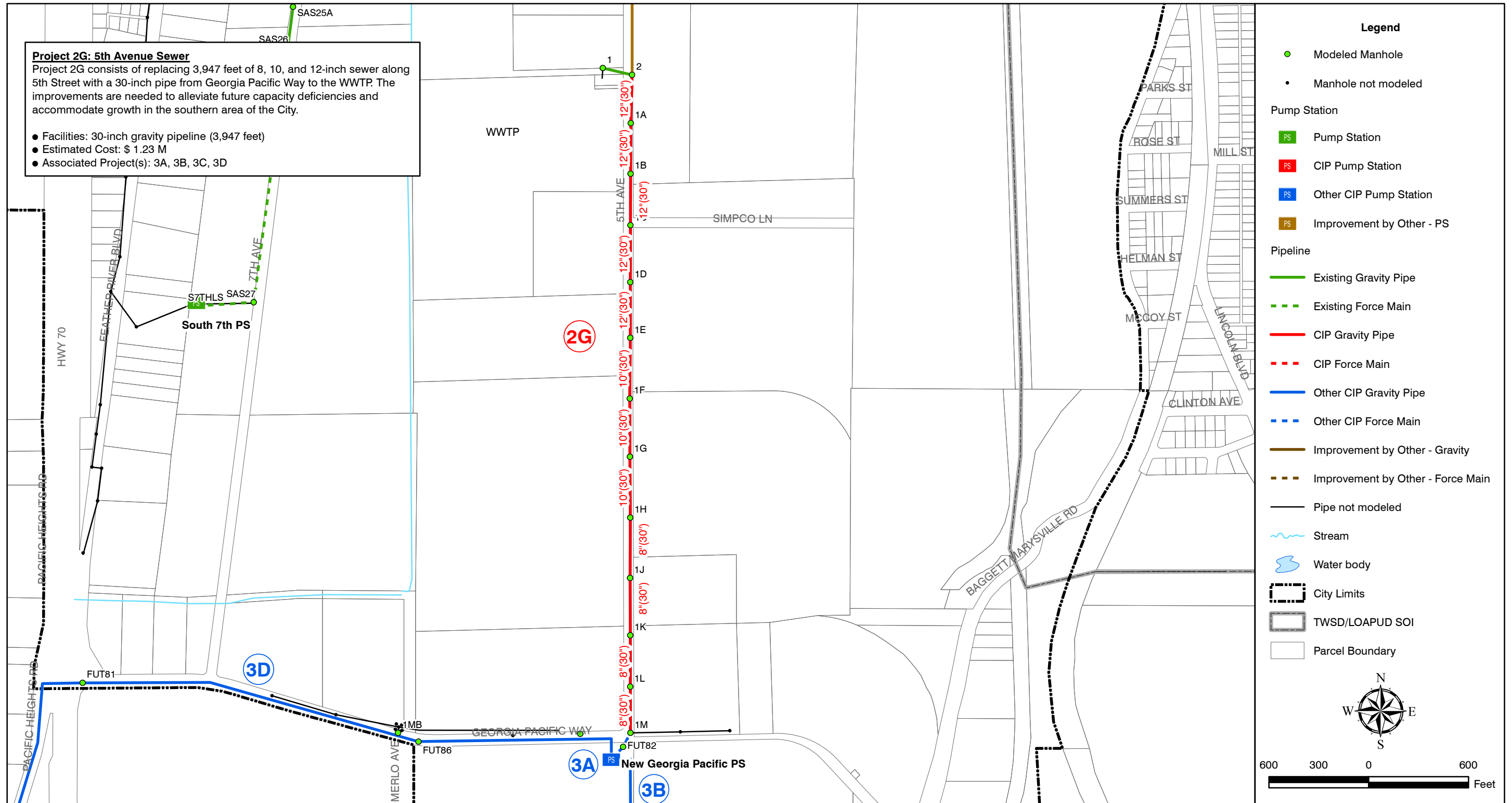


Figure 7.12
PROJECT 2G
SANITARY SEWER MASTER PLAN
CITY OF OROVILLE



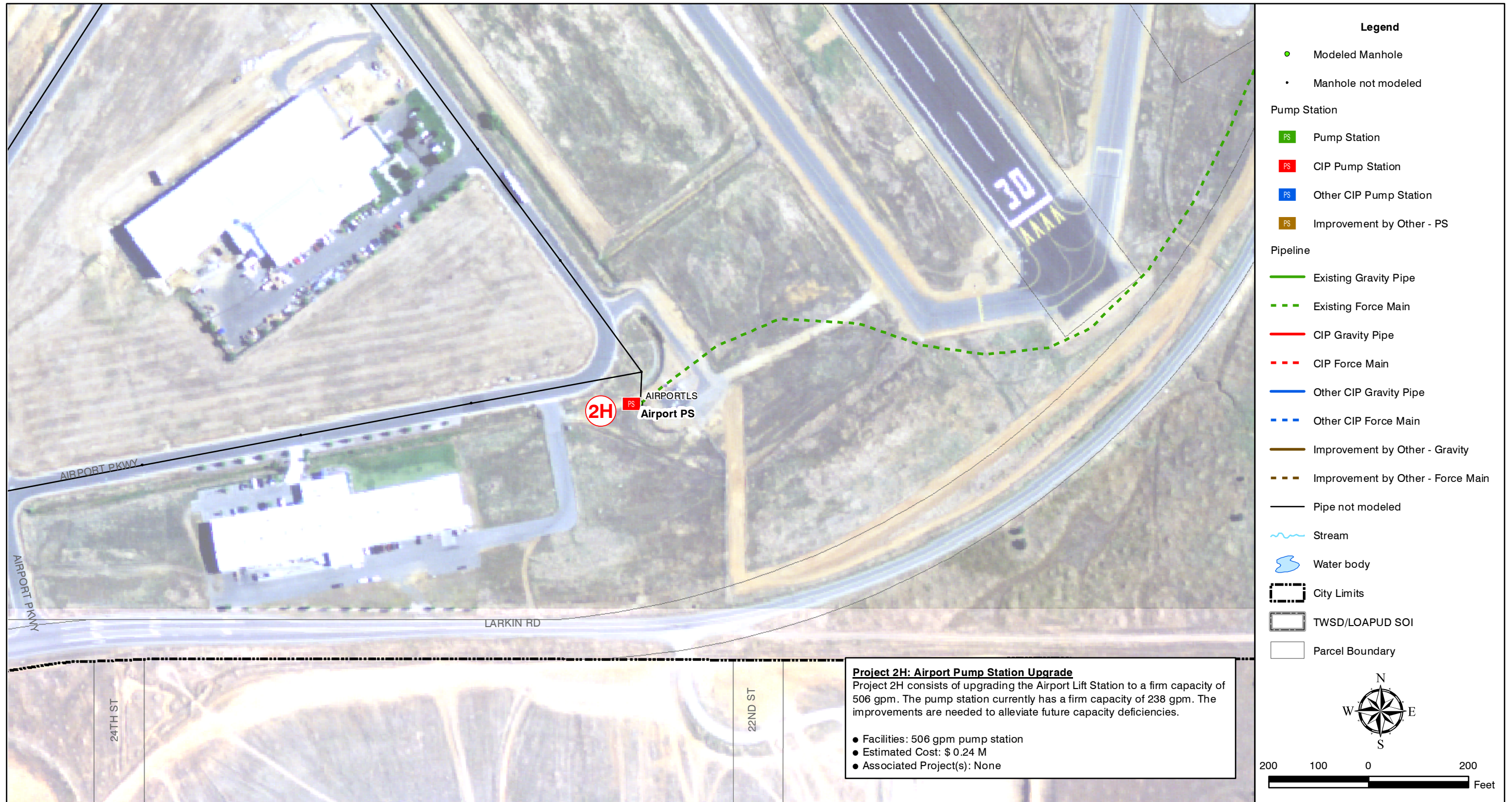


Figure 7.13
PROJECT 2H
SANITARY SEWER MASTER PLAN
CITY OF OROVILLE





Figure 7.14
PROJECT 21
SANITARY SEWER MASTER PLAN
CITY OF OROVILLE





Figure 7.15
PROJECT 3A
SANITARY SEWER MASTER PLAN
CITY OF OROVILLE



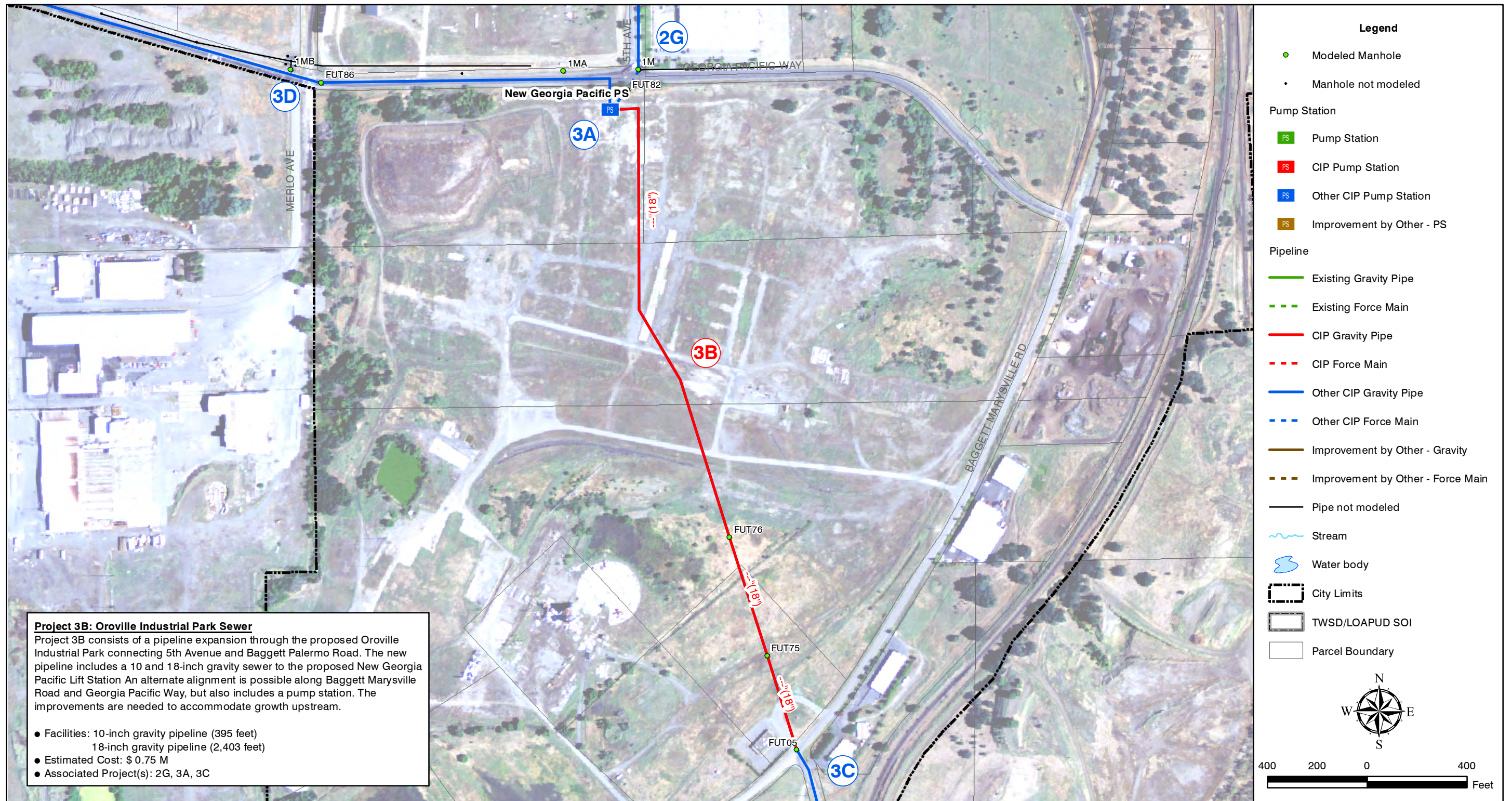


Figure 7.16
PROJECT 3B
SANITARY SEWER MASTER PLAN
CITY OF OROVILLE



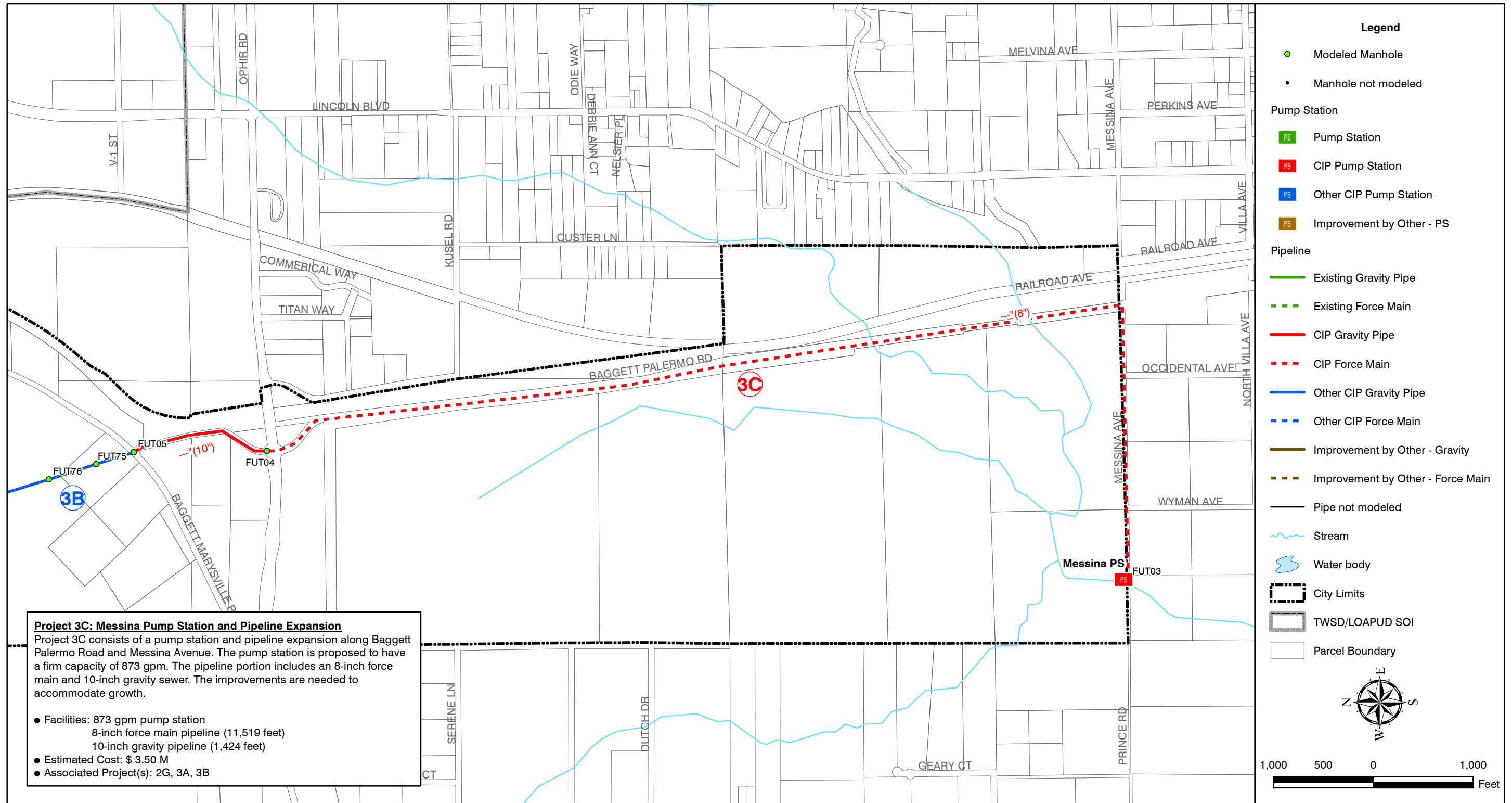


Figure 7.17
PROJECT 3C
SANITARY SEWER MASTER PLAN
CITY OF OROVILLE



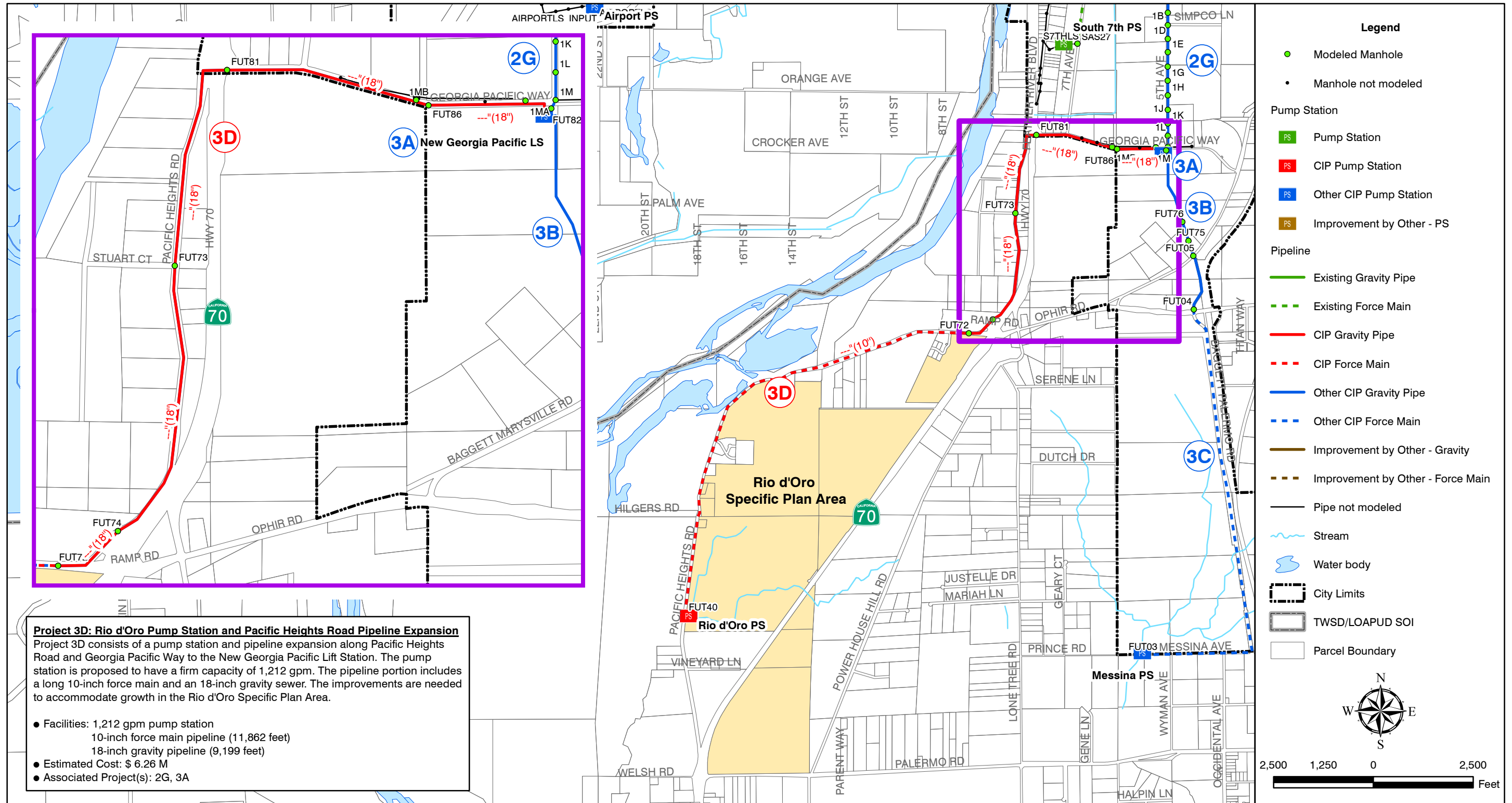


Figure 7.18
PROJECT 3D
SANITARY SEWER MASTER PLAN
CITY OF OROVILLE



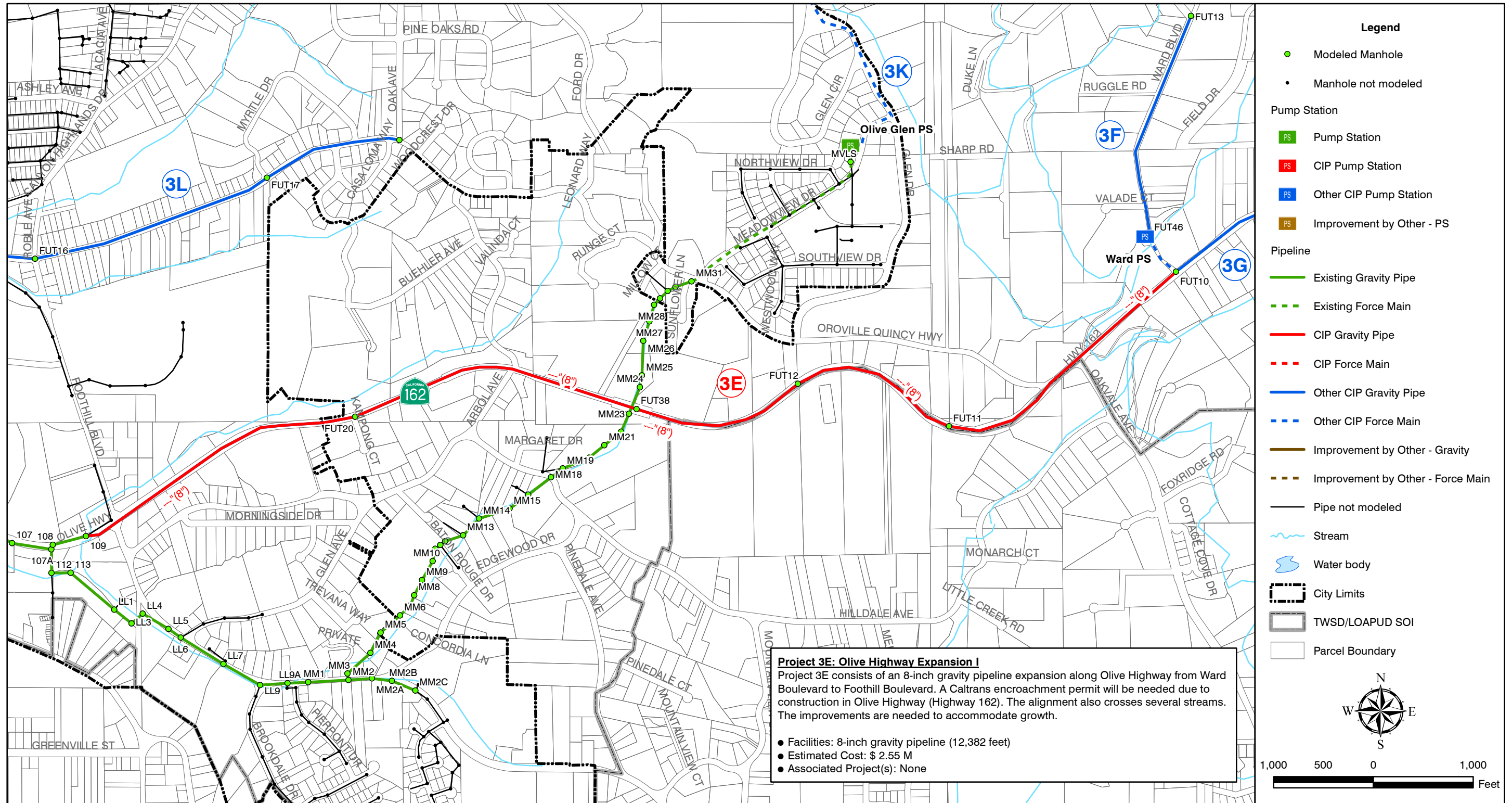


Figure 7.19
PROJECT 3E
SANITARY SEWER MASTER PLAN
CITY OF OROVILLE





Figure 7.20
PROJECT 3F
SANITARY SEWER MASTER PLAN
CITY OF OROVILLE



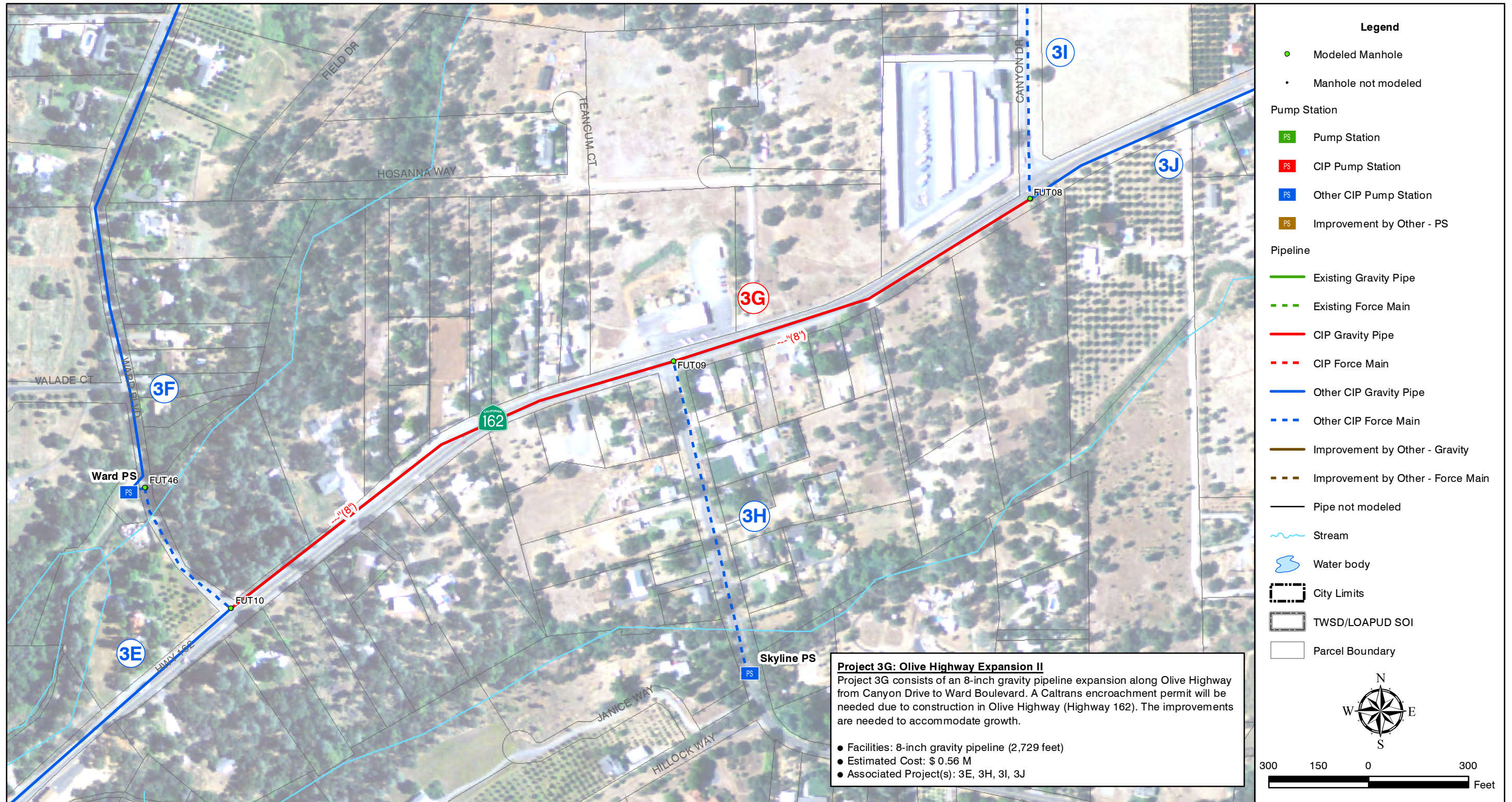


Figure 7.21
PROJECT 3G
SANITARY SEWER MASTER PLAN
CITY OF OROVILLE





Project 3H: Skyline Pump Station and Pipeline Expansion
 Project 3H consists of a pump station and pipeline expansion along Skyline Boulevard from Hillock Way to Olive Highway. The pump station is proposed to have a firm capacity of 100 gpm. The pipeline portion includes a 4-inch force main that crosses a stream. The improvements are needed to accommodate growth.

- Facilities: 100 gpm pump station
4-inch force main pipeline (960 feet)
- Estimated Cost: \$ 0.26 M
- Associated Project(s): 3E, 3G

Figure 7.22
PROJECT 3H
SANITARY SEWER MASTER PLAN
CITY OF OROVILLE





Figure 7.23
PROJECT 31
SANITARY SEWER MASTER PLAN
CITY OF OROVILLE



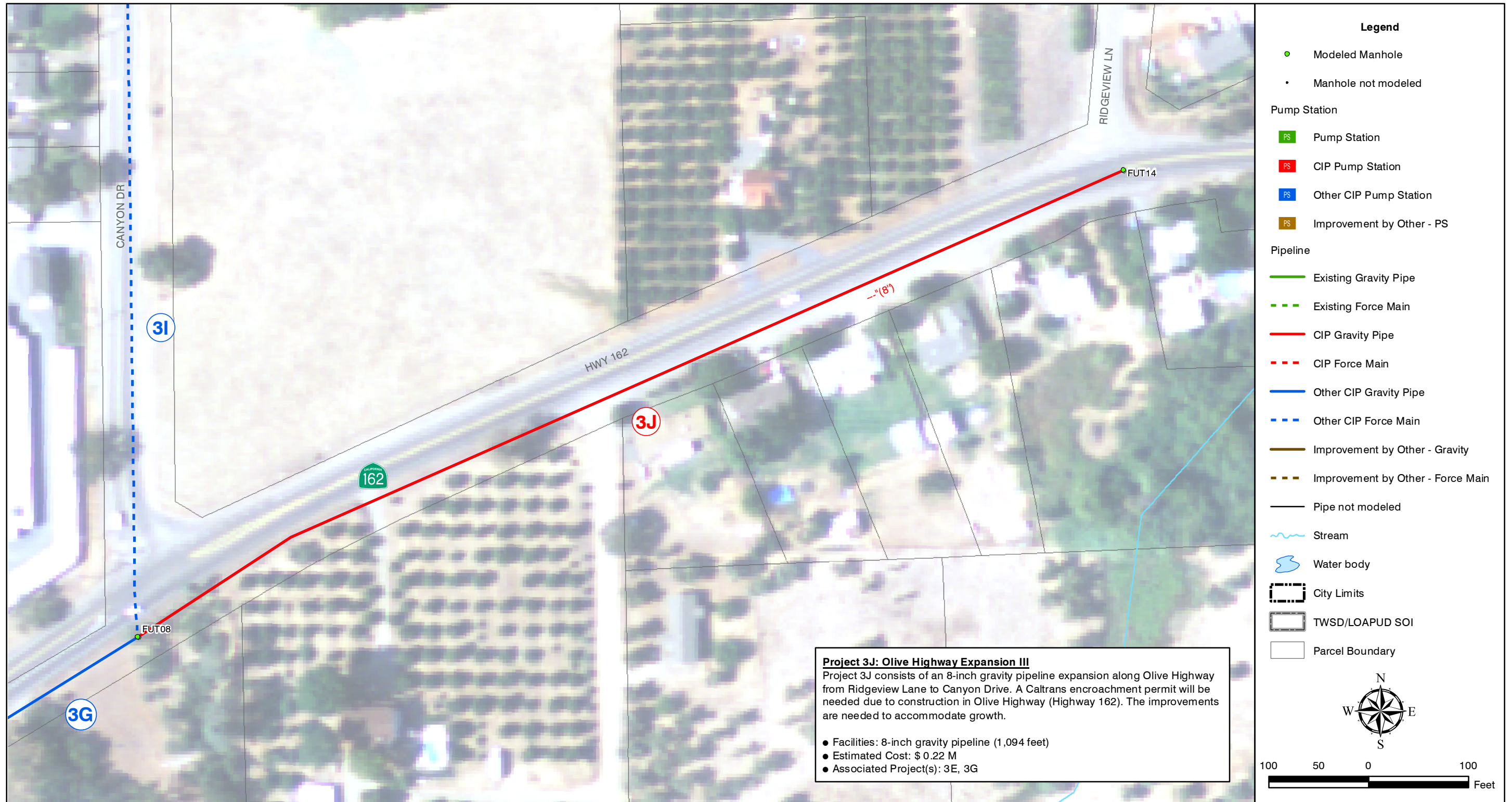


Figure 7.24
PROJECT 3J
SANITARY SEWER MASTER PLAN
CITY OF OROVILLE



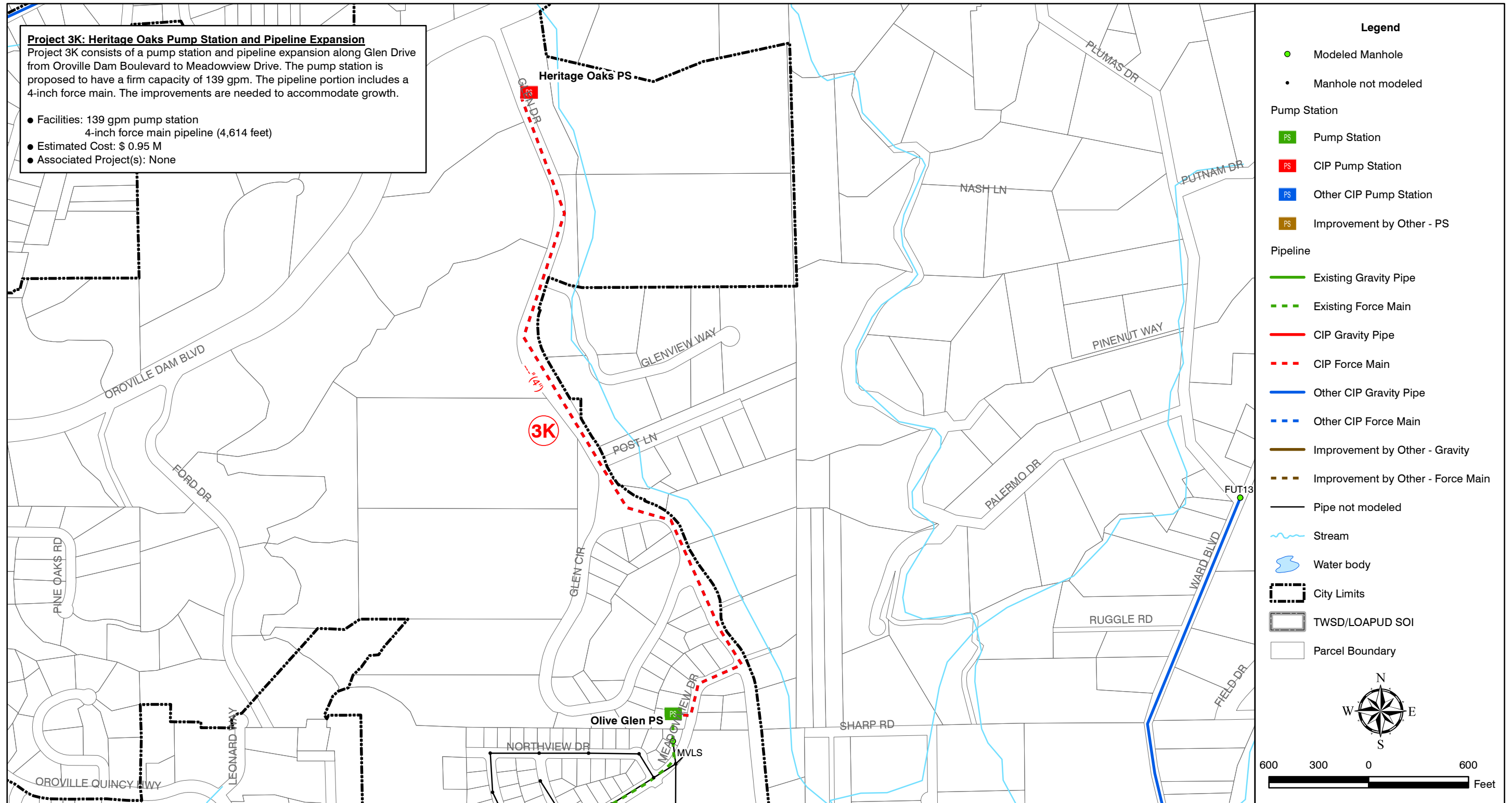


Figure 7.25
PROJECT 3K
SANITARY SEWER MASTER PLAN
CITY OF OROVILLE